

# WATER FILTRATION SYSTEMS

*Water softeners, cartridges, filters and accessories*





# TABLE OF CONTENTS

WATER FILTRATION SYSTEMS	4	CARTRIDGE FILTRATION SYSTEMS	19
WHY THE WATER NEEDS TO BE SOFTENED	4	BRITA PURITY C	19
HOW A WATER SOFTENER WORKS	4	BRITA PURITY	20
HOW A CARTRIDGE FILTRATION SYSTEM WORKS	8	BWT BESTMAX	21
WHERE TO USE FILTRATION SYSTEMS	9	BWT OTHERS	21
		PENTAIR EVERPURE	22
AUTOMATIC WATER SOFTENERS	10	PENTAIR EVERPURE CLARIS	22
LF MILLENNIUM	10	PENTAIR OTHERS	23
LF MINIBAR	10	3M CUNO	23
LF MINICAB	11	PROFINE	24
LF MATIC	11	OMNIPURE	24
COMPACT MONOBLOC	12	BILT	24
DVA ISI	12	WCF	25
DVA GIX	12	DEDICATED VERSIONS	25
DVA ALIA	13	HIGH VOLUME DEDICATED VERSION	25
OTHER MODELS	13		
		CARTRIDGE FILTRATION SYSTEMS	
AUTOMATIC WATER SOFTENERS		SPARE PARTS	26
SPARE PARTS	14	BRITA SPARE PARTS	26
LF MATIC RANGE	14	BWT SPARE PARTS	26
DVA RANGE	14	PENTAIR SPARE PARTS	27
MICRODOS RANGE	14	3M CUNO SPARE PARTS	27
		PROFINE SPARE PARTS	27
MANUAL WATER SOFTENERS	15	OMNIPURE SPARE PARTS	28
DVA	15	BILT SPARE PARTS	28
GS	15	WCF SPARE PARTS	28
MANUAL WATER SOFTENERS		IN-LINE FILTRATION CARTRIDGES	29
SPARE PARTS	16	PENTAIR	29
DVA RANGE	16	OMNIPURE	29
GS RANGE	16	OTHERS	29
WATER SOFTENERS CONSUMABLE	17	OCS WATER FILTERS	30
SALTS	17	IMMERSED TANK FILTERS	30
RESINS	17	WATER TANK FILTERS	30
WATER QUALITY TESTS	18	PRE-FILTRATION	31
DROPS	18	AQUA	31
STRIPS	18	OTHERS	32
		SERVICE FILTRATION	33
		PITCHERS	33
		INLET PIPES	34
		STAINLESS STEEL INLET PIPES	
		WITH CONICAL FITTINGS	34

# WATER FILTRATION SYSTEMS

## WHY THE WATER NEEDS TO BE SOFTENED

Water hardness is a crucial element for ensuring the correct functioning and for extending the lifetime of equipment (dishwashers, combi steamers, ice cube makers, coffee machines, water fountains, washing machines...).

- If the water is too soft, it can corrode the pipes and hoses of the equipment. The presence of a grey-green substance and premature equipment breakdown could be a consequence.
- If the water is too hard, the equipment can become overgrown with limescale. This results in limescale residues, loss of flow or can even lead to damage of the mechanical parts.

The quality of the water is also hugely important when considering the taste and aesthetic rendering of the final product (ice makers, coffee machines, water fountains, etc.).

- If the water is too soft, the coffee will quickly become too acidic and this will affect the taste.
- If the water is too hard, the ice cubes will no longer be transparent.

In view of these factors, which may cause equipment to break down in a relatively short period and lead to customer dissatisfaction, it is important to address these issues from the start in order to guarantee optimal water quality.

The filter cartridge is the perfect solution for a precise application, with specific parameters for the volume of water required. Installation, adjustment and maintenance work is very quick and simple. However, the volume of treated water remains limited.

The use of a water softener is the best and most efficient solution for the treatment of a complete network. Installation, adjustment and maintenance requires more expertise, but in doing so, optimal water quality can be guaranteed long-term.

In some cases, if large particles are present in the water, it will also be necessary to filter the water upstream on the network with a pre-filtration system.



## HOW A WATER SOFTENER WORKS

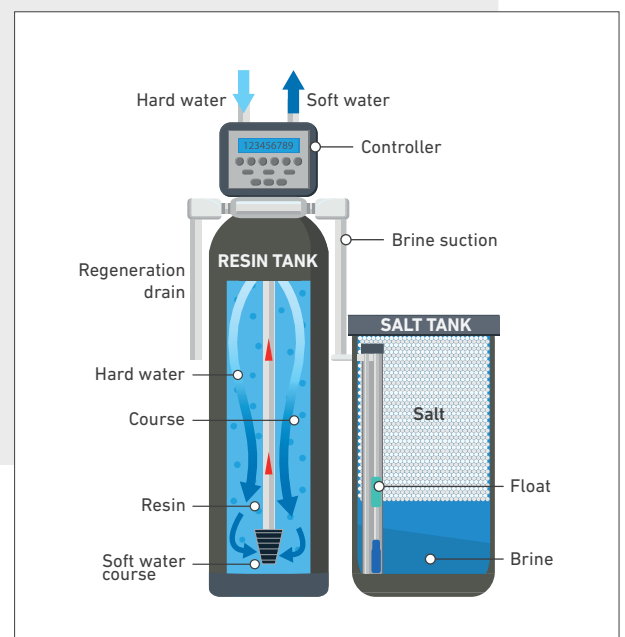
A water softener is made up of a resin tank. During the service cycle, when in contact with the resin, the water discharges its calcium and magnesium ions and is in turn charged with sodium ions. The ions are neutral for the water hardness. During this service phase, the resin takes on the limescale until saturation. It must then be regenerated.

A water softener also contains a salt container. During the regeneration cycle, the brine present in the salt container is pumped through the resin, which enables the descaling process to take place. After this cleaning, the softener can be operated in the duty cycle again.

The frequency and duration of each cycle depends on the inlet water hardness, the volume of water to be treated, and the hardness of the water sought at the outlet of the system.

Automatic water softeners are equipped with an electromechanical or electronic system allowing the cycles to be set and programmed so that the changeover from one to the other is automatic. Manual water softeners require intervention for the transition from one cycle to another, and during the regeneration cycle.

The regeneration cycle consumes water. Using an automatic time delay system will trigger regeneration, even if the water consumption does not justify it. The use of a volumetric system will optimize the triggering of the regeneration cycle according to the actual water consumption. The presence of a by-pass makes it possible to shut the water flow, especially during maintenance operations.



## HOW TO CHOOSE THE RIGHT WATER SOFTENER?

Choosing the right water softener for your installation depends on:

- Water hardness
- Water consumption & regeneration

## WATER HARDNESS

The hardness of the water, or the Hydrotimetric Titer of Water, is an indicator of water mineralization.

The degree of hardness depends mainly on the presence of calcium and magnesium ions.

Three units are commonly used to express this hardness.

- French unit: °fH (Total Hardness) 1 °fH = 10 mg / L of calcium carbonate
- Imperial unit: °TH (Total Hardness) 1 °TH = 10 mg / L of calcium hydroxide
- German unit: °GH (Total Hardness) 1 °GH = 10 mg / L of calcium oxide

## HYDROTIMETRIC TITER VALUES RANGE

	Qualité de l'eau	Douce	Plutôt dure	Dure	Très dure
French	°fH	0 à 13	14 à 25	26 à 37	>37
	Traitement	Facultatif	Recommandé	Indispensable	Indispensable

	Water quality	Pure	Rather hard	Hard	Very hard
Imperial (English)	°TH	0 à 9	10 à 18	19 à 26	>26
	Treatment	Optional	Recommended	Essential	Essential

	Wasserqualität	Weich	Mittel	Hart	Sehr hart
German	°GH	0 à 7	8 à 14	15 à 21	>21
	Aufbereitung	Optional	Empfohlen	Erforderlich	Erforderlich



The capacities of the water softener and its settings depend on the level of water hardness. It is therefore advisable to know the value at the place of installation, before choosing your softener model.

- Test the water hardness with a test kit (°fH / °TH / °GH).

These easy-to-use test kits allow you to determine the exact water hardness at the place of use before installing and adjusting the water softener. They will also allow control after the installation of the water softener, and during its maintenance.

# WATER FILTRATION SYSTEMS

## WATER CONSUMPTION & REGENERATION

Water consumption at the installation site is the easiest parameter to understand. It determines the resin volume required in the water softener, and therefore its capacity. The water volume varies depending on the type of installation (laundry, combi oven, coffee machine, pot, water fountain, etc.).

The simplest way to check the customer's consumption and reduce this to an average daily consumption.

- Determine the daily consumption (L / day).

The number of regeneration cycles required depends on the volume of water treated, and on the water hardness entering the water softener. Depending on the water softener capacity, it is necessary to regenerate several times a day to once every 5 days. On an automatic water softener the regeneration cycle can last up to 2 hours.

- Determine the frequency of regeneration.

The water hardness, the daily consumption rate and the regeneration frequency determine the required water softener capacity according to the following formula:

**(Daily consumption x Water hardness / A) x Regeneration frequency**



French		°fH	Imperial (English)		°TH	German		°GH
	Valeur de A	5000		Value of A	3520		Wert von A	2825

### Example:

For an installation consuming 500 liters of water per day, with a hardness of (37 ° fH, 26 ° TH, 21 ° GH), I want to regenerate once every 2 days:

$$° \text{fH: } (500 \times 37/5000) \times 2 = 7.4 \quad ° \text{TH: } (500 \times 26/3520) \times 2 = 7.4 \quad ° \text{GH: } (500 \times 21/2825) \times 2 = 7.4$$

For intermediate values, choose a water softener with a larger capacity. In this installation, if we want to regenerate only once every 2 days, a water softener with a capacity of 8 liters of resin will be necessary.

## SOME OTHER DETAILS

### MANUAL SOFTENER:

Manual softeners generally have the same functions as automatic softeners, but the regeneration cycles must be operated manually by the user, by pumping the brine using a lever. These less sophisticated versions are also cheaper.

### BY-PASS:

This component allows you to disconnect the filtration system from the general water network. The non-softened water then flows directly downstream of the softener. This allows the maintenance of the system (recharging, repairing) or the use of untreated water.

### CHRONOMETRIC/VOLUMETRIC ADJUSTMENT:

This is the type of regeneration programming on an automatic softener.

- Chronometric adjustment (Chrono. Adj.) allows regular planning of regeneration, based on estimated need. Facilitating the management of consumables and the agreement with the user's schedule, this remains a basic setting that does not optimize water consumption and does not guarantee constant soft water quality.
- Volumetric adjustment (Vol. adj.) allows triggering of regeneration according to the quantity of water treated. This advanced setting allows adaptation to fluctuations in use, and therefore optimization of water consumption. The softener also tends to provide consistent water quality.

**Softeners with volumetric adjustment also have the chronometric option.**

## WHICH CAPACITY TO CHOOSE?

The choice of the capacity of the filtration system will therefore depend on the degree of hardness of the network water, but also on the current user's water consumption.

The tables below will enable you, depending on the hardness unit used, to best select the capacity of its filtration system.

They also indicate whether the use of cartridge filtration is a reasonable alternative to the softener, when water consumption remains moderate (above the red line). Values are given on the standard basis of one regeneration per day.

For a given value, it will be necessary to choose an equal or just greater capacity. You can also decide to increase the frequency of regenerations, with the loss of time and water caused.

The choice of a significantly higher capacity will make it possible to reduce the frequency of regenerations, and to anticipate the possible increase of the current user's water consumption.



°fH	14	15	16	17	18	19	20	21	22	23	24	25	26	27	28	29	30	31	32	33	34	35	36	37
300	0.8	0.9	1.0	1.0	1.1	1.1	1.2	1.3	1.3	1.4	1.4	1.5	1.6	1.6	1.7	1.7	1.8	1.9	1.9	2.0	2.0	2.1	2.2	2.2
500	1.4	1.5	1.6	1.7	1.8	1.9	2.0	2.1	2.2	2.3	2.4	2.5	2.6	2.7	2.8	2.9	3.0	3.1	3.2	3.3	3.4	3.5	3.6	3.7
700	2.0	2.1	2.2	2.4	2.5	2.7	2.8	2.9	3.1	3.2	3.4	3.5	3.6	3.8	3.9	4.1	4.2	4.3	4.5	4.6	4.8	4.9	5.0	5.2
1000	2.8	3.0	3.2	3.4	3.6	3.8	4.0	4.2	4.4	4.6	4.8	5.0	5.2	5.4	5.6	5.8	6.0	6.2	6.4	6.6	6.8	7.0	7.2	7.4
1500	4.2	4.5	4.8	5.1	5.4	5.7	6.0	6.3	6.6	6.9	7.2	7.5	7.8	8.1	8.4	8.7	9.0	9.3	9.6	9.9	10.2	10.5	10.8	11.1
2000	5.6	6.0	6.4	6.8	7.2	7.6	8.0	8.4	8.8	9.2	9.6	10.0	10.4	10.8	11.2	11.6	12.0	12.4	12.8	13.2	13.6	14.0	14.4	14.8
3000	8.4	9.0	9.6	10.2	10.8	11.4	12.0	12.6	13.2	13.8	14.4	15.0	15.6	16.2	16.8	17.4	18.0	18.6	19.2	19.8	20.4	21.0	21.6	22.2
4000	11.2	12.0	12.8	13.6	14.4	15.2	16.0	16.8	17.6	18.4	19.2	20.0	20.8	21.6	22.4	23.2	24.0	24.8	25.6	26.4	27.2	28.0	28.8	29.6

°TH	10	11	12	13	14	15	16	17	18	19	20	21	22	23	24	25	26
300	1.1	1.2	1.3	1.4	1.5	1.6	1.7	1.8	1.9	2.0	2.1	2.3	2.4	2.5	2.6	2.7	2.8
500	1.8	2.0	2.1	2.3	2.5	2.7	2.9	3.0	3.2	3.4	3.6	3.8	3.9	4.1	4.3	4.5	4.6
700	2.5	2.8	3.0	3.3	3.5	3.8	4.0	4.3	4.5	4.8	5.0	5.3	5.5	5.8	6.0	6.3	6.5
1000	3.6	3.9	4.3	4.6	5.0	5.4	5.7	6.1	6.4	6.8	7.1	7.5	7.9	8.2	8.6	8.9	9.3
1500	5.4	5.9	6.4	7.0	7.5	8.0	8.6	9.1	9.6	10.2	10.7	11.3	11.8	12.3	12.9	13.4	13.9
2000	7.1	7.9	8.6	9.3	10.0	10.7	11.4	12.1	12.9	13.6	14.3	15.0	15.7	16.4	17.1	17.9	18.6
3000	10.7	11.8	12.9	13.9	15.0	16.1	17.1	18.2	19.3	20.4	21.4	22.5	23.6	24.6	25.7	26.8	27.9
4000	14.3	15.7	17.1	18.6	20.0	21.4	22.9	24.3	25.7	27.1	28.6	30.0	31.4	32.9	34.3	35.7	37.1

°GH	8	9	10	11	12	13	14	15	16	17	18	19	20	21
300	0.6	0.7	0.8	0.9	1.0	1.1	1.1	1.2	1.3	1.4	1.5	1.5	1.6	1.7
500	1.1	1.2	1.4	1.5	1.6	1.8	1.9	2.0	2.2	2.3	2.4	2.6	2.7	2.8
700	1.5	1.7	1.9	2.1	2.3	2.5	2.6	2.8	3.0	3.2	3.4	3.6	3.8	4.0
1000	2.2	2.4	2.7	3.0	3.2	3.5	3.8	4.1	4.3	4.6	4.9	5.1	5.4	5.7
1500	3.2	3.6	4.1	4.5	4.9	5.3	5.7	6.1	6.5	6.9	7.3	7.7	8.1	8.5
2000	4.3	4.9	5.4	5.9	6.5	7.0	7.6	8.1	8.6	9.2	9.7	10.3	10.8	11.4
3000	6.5	7.3	8.1	8.9	9.7	10.5	11.4	12.2	13.0	13.8	14.6	15.4	16.2	17.0
4000	8.6	9.7	10.8	11.9	13.0	14.1	15.1	16.2	17.3	18.4	19.5	20.5	21.6	22.7

# WATER FILTRATION SYSTEMS

## HOW A CARTRIDGE FILTRATION SYSTEM WORKS

Even if its operation seems basic, a filter cartridge is a concentration of technologies. It is made up of several filtration stages, depending on the desired goal.

It is capable of producing softened water, but also stops toxins (particles, chlorine, arsenic, heavy metals) or bacteria if necessary.

A cartridge can thus consist of the following stages:

- Pre filtration: to filter the largest particles
- Resin: to stop limescale
- Carbon block: to destroy unwanted tastes, odours or toxins
- Fine filtration: to filter fine particles

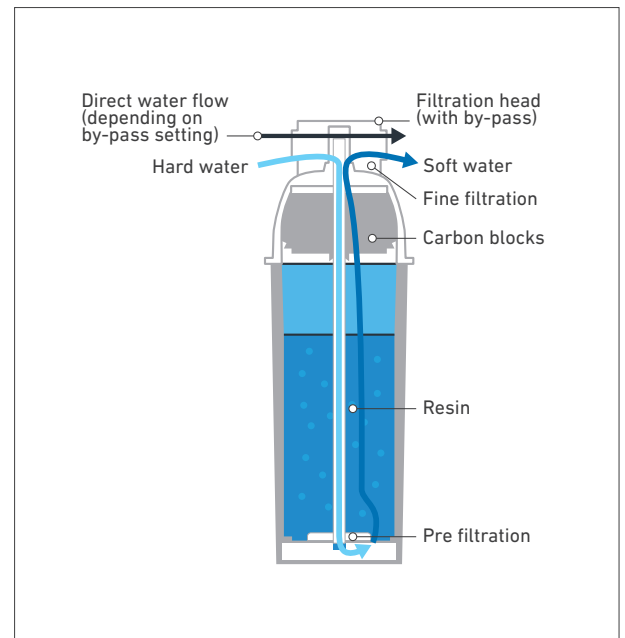
The water which has passed through all these stages, is completely pure at the outlet.

The head of the system plays an important regulatory role. Its by-pass function, in the case of a cartridge, allows untreated water to pass through, which then mixes with pure water. Indeed, depending on the use (coffee, cooking ...), it is necessary to maintain a certain level of lime to guarantee an optimal taste.

As the cartridge filtration system does not have a regeneration function, once it has reached the level, its replacement is compulsory.

In addition, the limited capacity and moderate flow do not allow use for an entire network or in the case of significant water consumption.

The advantage is to be able to locally choose a cartridge specificity corresponding to the downstream application. Generally, the filtration head is common to a whole range.



## OTHER FILTRATION SYSTEMS

### IN-LINE FILTRATION CARTRIDGES:

Without the by-pass, these cartridges connect directly to the water inlet of a material. They are economical, compact, and easy to use.

### OFFICE COFFEE SYSTEMS (OCS) WATER FILTERS:

Specially developed to meet the needs of office coffee machines, these filters are installed directly in the water tank.

### PRE-FILTRATION:

In some cases, the water distributed by the external network contains a lot of dirt and impurities (particles, sludge, sand, etc.). It is then necessary to install a suitable pre-filtration system, which will guarantee optimum operation of the downstream softening system.



# WATER FILTRATION SYSTEMS

## WHERE TO USE FILTRATION SYSTEMS

The table below helps determine which type of filtration should be used depending on the application in a professional kitchen.

This is not a strict indication, but an ideal presentation of cases. Filtration systems are versatile to varying degrees, and the user manuals should be consulted as well as the manufacturers recommendations to optimize the installation.

You will find the entire REPA product offer corresponding to these systems in this brochure.

Universal												
					HoReCa							
Coffee				Vending	Steam	Clean	Beverage					
Commercial Coffee Machine	Bean2cup Coffee Machine	Household Coffee Machine	OCS	Vending Coffee Machine	Combi Oven	Dish Washer	Ice Machine	American Fridge	Fountain	Table Drinking Water		
												
Pre-filtration 	*	*	*	*	*	*	*	*	*	*	*	*
Automatic softener 												
Manual softener 												
Cartridge filtration 												
In-line cartridge filtration 												
OCS filter 												
Service filtration 												

\* depends on the quality of the water from the external network more than on the application.

# AUTOMATIC WATER SOFTENERS

## LF MILLENNIUM



1



2



3

Photo	LF Code	GEV Code	Model	Capacity (L)	Connect. (ø)	Notes	Dimensions (mm)	Resin / salt / regeneration salt content	Flow rate (L)	Most noted use
1	3010297	531334	8 Basic Plus	8	3/4	Chrono. adj.	245 x 530 x h455	5L / 13kg / 0.75kg	500	Universal
2	3010305	531336	12 Basic Plus	12	3/4	Chrono. adj.	245 x 530 x h555	9L / 25kg / 1.3kg	1000	Universal
1	3010292	530998	V8 Basic	8	3/4	Vol. adj.	245 x 530 x h455	5L / 13kg / 0.75kg	500	Universal
2	3010294	531331	V12 Basic	12	3/4	Vol. adj.	245 x 530 x h555	9L / 25kg / 1.3kg	1000	Universal
1	3010293	530999	V8 Basic Plus	8	3/4	Vol. adj.	245 x 530 x h455	5L / 13kg / 0.75kg	500	Universal
2	3010295	531332	V12 Basic Plus	12	3/4	Vol. adj.	245 x 530 x h555	9L / 25kg / 1.3kg	1000	Universal
1	3010308	531337	8 Full Optional	8	3/4 - 3/8	Chrono. adj.	245 x 530 x h455	5L / 13kg / 0.75kg	500	Universal
2	3010309	531338	12 Full Optional	12	3/4 - 3/8	Chrono. adj.	245 x 530 x h555	9L / 25kg / 1.3kg	1000	Universal
1	3010296	531333	V8 Full Optional	8	3/4 - 3/8	Vol. adj.	245 x 530 x h455	5L / 13kg / 0.75kg	500	Universal
2	3010298	531335	V12 Full Optional	12	3/4 - 3/8	Vol. adj.	245 x 530 x h555	9L / 25kg / 1.3kg	1000	Universal
3	3010317	LF3010317	V8 "Salt Alarm"	8	3/4 - 3/8	Vol. adj.	245 x 530 x h455	5L / 13kg / 0.75kg	500	Coffee/ Beverage
3	3010318	LF3010318	V12 "Salt Alarm"	12	3/4 - 3/8	Vol. adj.	245 x 530 x h555	9L / 25kg / 1.3kg	1000	Coffee/ Beverage

## LF MINIBAR



1



2

Photo	LF Code	GEV Code	Description	Capacity (L)	Connect. (ø)	Notes	Dimensions (mm)	Resin / salt / regeneration salt content	Flow rate (L)	Most noted use
1	3010315	LF3010315	4	4	3/4 - 3/8	Chrono. adj.	180 x 350 x h460	3.5L / 6kg / 0.6kg	400	Coffee/ Beverage
2	3010316	LF3010316	V4	4	3/4 - 3/8	Vol. adj.	180 x 350 x h460	3.5L / 6kg / 0.6kg	400	Coffee/ Beverage
2	3010319	LF3010319	V4 "Salt Alarm"	4	3/4 - 3/8	Vol. adj.	180 x 350 x h460	3.5L / 6kg / 0.6kg	400	Coffee/ Beverage

# AUTOMATIC WATER SOFTENERS

## LF MINICAB



1



2

Photo	LF Code	GEV Code	Description	Capacity (L)	Connect. (ø)	Notes	Dimensions (mm)	Resin / salt / regeneration salt content	Flow rate (L)	Most noted use
1	3010313	LF3010313	8 Basic Plus S/AS	8	3/4 - 3/8	Chrono. adj.	220 x 470 x h455	5.2L / 10kg / 0.75kg	500	Coffee/ Beverage
1	3010314	LF3010314	V8 Basic Plus S/AS	8	3/4 - 3/8	Vol. adj.	220 x 470 x h455	5.2L / 10kg / 0.75kg	500	Coffee/ Beverage
2	3010320	LF3010320	V8 Basic Plus C/AS "Salt Alarm"	8	3/4 - 3/8	Vol. adj.	220 x 470 x h455	5.2L / 10kg / 0.75kg	500	Coffee/ Beverage

## LF MATIC



1



2



3



4



5

Photo	LF Code	GEV Code	Description	Capacity (L)	Connect. (ø)	Notes	Dimensions (mm)	Resin / salt / regeneration salt content	Most noted use
1	3010260	LF3010260	MATIC 5	5	3/4	Chrono. adj.	165 x 325 x h530	4L / 10kg / 0.5kg	Universal
2	3010074	LF3010074	MATIC 8	8	3/4	Chrono. adj.	200 x 430 x h550	6L / 20kg / 1kg	Universal
3	3010094	LF3010094	MATIC 12	12	3/4	Chrono. adj.	260 x 480 x h650	8L / 30kg / 1.5kg	Universal
4	3010098	LF3010098	MATIC 16	16	3/4	Chrono. adj.	325 x 505 x h645	13L / 40kg / 2kg	Universal
5	3010099	LF3010099	MATIC 20	20	3/4	Chrono. adj.	330 x 550 x h1010	15L / 75kg / 2.5kg	Universal

# AUTOMATIC WATER SOFTENERS

## COMPACT MONOBLOC



LF Code	GEV Code	Description	Capacity (L)	Notes	Dimensions (mm)	Resin / salt / regeneration salt content	Most noted use
3010087	LF3010087	Monobloc 8L	11.4	Vol. adj.	300 x 430 x h660	8L / - / -	Universal
3010088	LF3010088	Monobloc 12L	14.4	Vol. adj.	300 x 430 x h1010	12L / - / -	Universal
3010093	LF3010093	Monobloc 25L	32.5	Vol. adj.	320 x 430 x h1120	25L / - / -	Universal
7116274	LF7116274	Monobloc 8L "Hot Water"	11.4	Vol. adj.	300 x 430 x h660	8L / - / -	Coffee/Vending

## DVA ISI



1



2



3

Photo	LF Code	GEV Code	Description	Capacity (L)	Connect. (ø)	Notes	Dimensions (mm)	Resin / salt / regeneration salt content	Flow rate (L)	Most noted use
1	5110508	530825	ISI 5	5	3/8 - 3/4	Chrono. adj.	230 x 355 x h420	3.8L / 10kg / 0.5kg	1500	Universal
2	5109962	530826	ISI 8	8	3/8 - 3/4	Chrono. adj.	250 x 450 x h440	5.6L / 20kg / 1kg	1500	Universal
3	5143872	530827	ISI 12	12	3/8 - 3/4	Chrono. adj.	290 x 400 x h550	8.4L / 25kg / 1.5kg	1500	Universal

## DVA GIX



1



2



3

Photo	LF Code	GEV Code	Description	Capacity (L)	Connect. (ø)	Notes	Dimensions (mm)	Resin / salt / regeneration salt content	Flow rate (L)	Most noted use
1	5113198	530808	GIX 5	5	1/2	Chrono. adj. - Daily prog.	230 x 380 x h515	3.8L / 10kg / 0.5kg	1500	Universal
2	5109389	530843	GIX 8	8	3/4	Chrono. adj. - Daily prog.	250 x 480 x h540	5.6L / 20kg / 1kg	1500	Universal
3	5113593	530824	GIX 12	12	3/4	Chrono. adj. - Daily prog.	290 x 425 x h665	8.4L / 25kg / 1.5kg	1500	Universal

# AUTOMATIC WATER SOFTENERS

## DVA ALIA



1



2



3

Photo	LF Code	GEV Code	Description	Capacity (L)	Connect. (ø)	Notes	Dimensions (mm)	Resin / salt / regeneration salt content	Flow rate (L)	Most noted use
1	5143875	530527	ALIA 5	5	3/4	Chrono. adj. - Daily prog. - Salt alarm	230 x 360 x h515	3.5L / 10kg / 0.5kg	1500	Universal
2	5110488	530528	ALIA 8	8	3/4	Chrono. adj. - Daily prog. - Salt alarm	250 x 460 x h540	5.5L / 20kg / 1kg	1500	Universal
3	5143876	530529	ALIA 12	12	3/4	Chrono. adj. - Daily prog. - Salt alarm	285 x 405 x h595	8.5L / 25kg / 1.5kg	1500	Universal

## OTHER MODELS



MICRODOS



BORES



ECO



ELECTRONIC



DVA MAXI



EUROC

LF Code	GEV Code	Description	Capacity (L)	Connect. (ø)	Notes	Dimensions (mm)	Resin / salt / regeneration salt content	Flow rate (L)	Most noted use
5118365	530354	Microdos ATL 12	12	3/4	Chrono. adj.	325 x 550 x h660	8L / - / 1.8kg	1500	Universal
5112107	530397	Microdos Maxi 26	26	3/4	Chrono. adj.	310 x 430 x h1100	15L / - / 2.7kg	1500	Universal
5118377	530355	Microdos AVL 12	12	3/4	Vol. adj.	325 x 550 x h660	8L / - / 1.8kg	1500	Universal
5118378	530380	Microdos Maxi 26	26	3/4	Vol. adj.	310 x 430 x h1100	15L / - / 2.7kg	1500	Universal
3010146	LF3010146	Bores 5	5	3/4	Chrono. adj.	230 x 435 x h510	5.5 kg / 20kg / 1kg	-	Universal
3010149	LF3010149	Bores 12	12	3/4	Chrono. adj.	310 x 500 x h610	9 kg / 25kg / 1.6kg	-	Universal
3010155	LF3010155	Bores 20	20	3/4	Chrono. adj.	380 x 410 x h1130	18 kg / 70kg / 3.2kg	-	Universal
3010259	LF3010259	Eco 5	5	3/4	Chrono. adj.	165 x 325 x h415	4 kg / 10kg / 0.5kg	-	Universal
3010241	LF3010241	Eco 8	8	3/4	Chrono. adj.	225 x 375 x h415	5.4 kg / 10kg / 0.5kg	-	Universal
3010242	LF3010242	Eco 12	12	3/4	Chrono. adj.	260 x 450 x h440	5.6 kg / 20kg / 1kg	-	Universal
3010243	LF3010243	Electronic 8	8	3/4	Chrono. adj.	200 x 410 x h540	5.6 kg / 20kg / 1kg	-	Universal
3010244	LF3010244	Electronic 12	12	3/4	Chrono. adj.	260 x 475 x h650	8.4 kg / 25kg / 1.5kg	-	Universal
5143877	530526	DVA Maxi 16	26	1	Chrono. adj.	310 x 430 x h1120	18L / - / 2.4kg	2700	Universal
5143878	530870	Euroc 4	3.8	3/4	Chrono. adj.	178 x 357 x h435	6 kg / - / 0.42kg	210	Universal

# AUTOMATIC WATER SOFTENERS SPARE PARTS

## LF MATIC RANGE



LF Code	GEV Code	Description
3010130	LF3010130	Head cover
3010275	LF3010275	Autotrol head timer 255/460TC
3010034	530034	Autotrol head timer 255/440i
3010043	530038	Complete bowl for autotrol 255/440i
3010044	520719	Programmer motor 12V 50Hz
3010046	530036	Cam for autotrol head 255/440i
3010121	520528	Autotrol head diaphragm set 255/440i
3010124	LF3010124	Upper filter for autotrol head 255/440i
3010200	530041	Power supply module 220/12V
3010126	LF3010126	Chlorinator for autotrol valve
3010127	LF3010127	Standard lid for autotrol head 255/440i
3010245	LF3010245	Resin disinfection 255 Logix kit with salt alarm

## DVA RANGE



LF Code	GEV Code	Description
3010200	530041	Power supply unit 6W 50Hz suitable for Autotrol 255/440 255/460
3160141	510836	Supply filter thread 3/4" ET - 3/4" IT total length 76mm plastic
5143879	540039	Pipe aerator inlet 3/4" outlet 3/4" approval DVGW
2111100	520309	Container SS connection 2 1/2" 8l
3010048	520322	O-ring
3010120	530037	O-ring set
3010043	530038	Air valve
5093909	402775	PCB with timer type 740 LOGIX suitable for GIX8
5086788	520525	Sensor optic for softener suitable for GIX 5/8/12
3010121	520528	Valve set for softener suitable for GIX 5/8/12
5143910	530628	Connection 3/4" - 3/4" operating p. to 10bar 50 t.max. 90°C 3-50 bar

## MICRODOS RANGE



Photo	LF Code	GEV Code	Description
1	5143924	530315	O-Ring silicone
2	3010200	530041	Power supply module 220/12V
3	5143910	530628	Connection 3/4" - 3/4" operating p. up to 10bar 50 t.max. 90°C 3-50 bar

# MANUAL WATER SOFTENERS

## DVA



1



2

Photo	LF Code	GEV Code	Model	Capacity (L)	Connect. (ø)	Dimensions (mm)	Resin content (L)	Regeneration salt (Kg)	Most noted use
1	3010291	530161	Manual softener	5	3/8	ø 190 x h300	3.5	1	Universal
1	3010001	530120	Manual softener	8	3/8	ø 185 x h400	5.8	1	Universal
1	3010002	530121	Manual softener	12	3/8	ø 185 x h500	9	1.5	Universal
1	3010003	530126	Manual softener	16	3/8	ø 185 x h600	12	2	Universal
1	3010004	530127	Manual softener	20	3/8	ø 185 x h900	15	3	Universal
1	3010060	530199	Manual softener	8	3/4	ø 185 x h400	5.8	1	Universal
1	3010061	530201	Manual softener	12	3/4	ø 185 x h500	9	1.5	Universal
1	3010062	530202	Manual softener	16	3/4	ø 185 x h600	12	2	Universal
1	3010063	530203	Manual softener	20	3/4	ø 185 x h900	15	3	Universal
2	3010005	LF3010005	Manual softener + By-pass	8	3/8	ø 185 x h400	5.8	1	Universal
2	3010006	LF3010006	Manual softener + By-pass	12	3/8	ø 185 x h500	9	1.5	Universal
2	3010007	LF3010007	Manual softener + By-pass	16	3/8	ø 185 x h600	12	2	Universal
2	3010008	530170	Manual softener + By-pass	20	3/8	ø 185 x h900	15	3	Universal
2	5109383	530167	Manual softener + By-pass	8	3/4	ø 185 x h400	5.8	1	Universal
2	5079587	530168	Manual softener + By-pass	12	3/4	ø 185 x h500	9	1.5	Universal
2	5109384	530169	Manual softener + By-pass	16	3/4	ø 185 x h600	12	2	Universal

## GS



LF Code	GEV Code	Model	Capacity (L)	Connect. (ø)	Dimensions (mm)	Resin content (L)	Regeneration salt (Kg)	Most noted use
3010095	LF3010095	Manual softener	6	3/8	ø185 x h335	4.2	1	Universal
3010161	LF3010161	Manual softener	8	3/8	ø 185 x h400	5.8	1	Universal
3010162	LF3010162	Manual softener	12	3/8	ø 185 x h500	9	1.5	Universal
3010163	LF3010163	Manual softener	16	3/8	ø 185 x h600	12	2	Universal
3010164	LF3010164	Manual softener	20	3/8	ø 185 x h900	15	3	Universal
3010101	LF3010101	Manual softener	8	3/4	ø 185 x h400	5.8	1	Universal
3010102	LF3010102	Manual softener	12	3/4	ø 185 x h500	9	1.5	Universal
3010103	LF3010103	Manual softener	16	3/4	ø 185 x h600	12	2	Universal
3010104	LF3010104	Manual softener	20	3/4	ø 185 x h900	15	3	Universal

# MANUAL WATER SOFTENERS SPARE PARTS

## DVA RANGE



LF Code	GEV Code	Description
3010011	520133	Tap connection 3/8"
3010012	520713	Tap connection 3/4"
3010015	520715	Lever
3010018	520131	O-ring ID ø 77mm thickness 6.5mm/BP
3010083	530806	O-ring ID ø 72mm thickness 7mm/BP
3010080	530807	Container lid/BP
3010016	530328	Nozzle connection M6x1
3010023	530128	Base/BP
3010021	520132	Filter mounting pos. upper
3010022	520134	Filter mounting pos. lower
3010286	520513	Valve mono by pass plastic
5143925	520213	Reducer connection 3/8" connection 2: 3/4"
3010084	530803	Lid handle
3010082	530804	Catch body suitable for type IV
2102567	530417	Connection thread 3/8" total length 43.5mm hose ø 10mm brass
2111100	520309	Container SS connection 2 1/2" 8l
3010014	520214	Reducer connection 3/8" connection 2: 3/4"
1349114	520218	Double nipple brass thread 3/8" - 3/4" Qty 1 pcs L1 12mm L2 12mm
5143931	520306	Overflow stock
5143924	530315	O-ring silicone thickness 1.78mm ID ø 14mm Qty 1 pcs
3010047	520742	Disc hours
5143932	530419	Connection long thread 3/4" total length 65mm hose ø 10mm brass
3010120	530037	O-ring set
5033590	530295	Compression spring ø 17mm L 29mm wire gauge ø 1.6mm
3010200	530041	Power supply unit 6W 50Hz suitable for Autotrol 255/440 255/460

## GS RANGE



Photo	LF Code	GEV Code	Description
1	3010119	LF3010119	Tap ø 3/8"
2	3010111	LF3010111	Tap ø 3/4"
3	3010114	LF3010114	Cap water softeners s/steel lid assembly
4	3010123	LF3010123	Base basis for water softener GS
5	3010016	530328	Nozzle connection M6x1
6	3010015	520715	Lever



## SALTS



1



2



3

Photo	LF Code	GEV Code	Description	Model	Capacity (L)	Application
1	5113170	530629	Regenerating salt	Large grains	2Kg	Water softeners
2	3010299	LF3010299	Regenerating salt	Tablets	10Kg	Water softeners
3	3010300	LF3010300	Regenerating salt	Tablets	25Kg	Water softeners

## RESINS



1



2



3

Photo	LF Code	GEV Code	Description	Model	Capacity (L)	Application
1	3010112	LF3010112	Ion exchange resin	Granules	5L	Water softeners
1	3010266	LF3010266	Ion exchange resin	Granules	8L	Water softeners
2	3010267	520136	Ion exchange resin	Granules	25L	Water softeners
2	5144060	530240	Ion exchange resin	Granules	25L - 20.5Kg	Water softeners
3	5110481	530273	Ion exchange resin + bucket	Granules	6L - 5Kg	Water softeners

# WATER QUALITY TESTS

## DROPS



LF Code	GEV Code	Description	Model	Brand	Capacity	Notes	Application
7110633	LF7110633	Water tester kit	Drops	Brita	-	°GH	Total hardness
3394551	LF3394551	Water tester kit	Drops	Repa	-	°fH	Total hardness
3394553	LF3394553	Refill for water tester kit	Drops	Repa	-	°fH	Total hardness
3010128	LF3010128	Water tester kit	Drops	Repa	-	°TH	Total hardness
7150450	LF7150450	Water tester kit	Drops	BWT	-	°KH	Carbonate hardness
3010621	800031	Water tester kit	Drops	Brita	-	°KH	Carbonate hardness
5109673	800034	Water tester kit	Drops	Brita	-	°GH + °KH	Total hardness + Carbonate hardness
2102984	LF2102984	Water tester kit	Drops	IPT	-	pH - 6.8 to 8.4	Acidity
3394552	LF3394552	Water tester kit	Drops	Reasol	-	ppm	Chlorine

## STRIPS



LF Code	GEV Code	Description	Model	Brand	Capacity	Notes	Application
3010232	LF3010232	Water tester	Strips	Merk	100 pcs	°GH ; °fH	Total hardness
5130752	541474	Water tester	Strips	Aquadur	100 pcs	ppm	Total hardness
5122677	800304	Water tester	Strips	MN	100 pcs	pH - 4.5 to 10.0	Acidity
5104055	800075	Water tester	Strips	MN	100 pcs	pH - 0 to 14	Acidity
5113652	800358	Water tester	Strips	Johnson	100 pcs	ppm	Chlorine
5092577	LF5092577	Water tester kit	Strips + Reader	Hach	80 pcs	ppm	Chlorine
3010285	LF3010285	Water tester kit	Strips + Drops	Fernox	-	-	Iron, Copper, pH, Chlorine & hardness

# CARTRIDGE FILTRATION SYSTEMS

## BRITA PURITY C



1



2



3



4

Photo	LF Code	GEV Code	Model	Description	Capacity (L)	Dimensions (mm)	Standard water flow (L/h)	Most noted use
1	3010619	LF3010619	25 Quell ST	Cartridge	352	ø 115 x h210	30	HoReCa/Coffee/Vending
1	3010618	530832	50 Quell ST	Cartridge	690	ø 115 x h260	60	HoReCa/Coffee/Vending
1	3010615	530833	150 Quell ST	Cartridge	2408	ø 115 x h415	60	HoReCa/Coffee/Vending
1	3010616	530834	300 Quell ST	Cartridge	4000	ø 135 x h470	60	HoReCa/Coffee/Vending
1	3010617	530835	500 Quell ST	Cartridge	6800	ø 165 x h610	100	HoReCa/Coffee/Vending
1	2106155	LF2106155	1100 Quell ST	Cartridge	11500	ø 190 x h610	100	HoReCa/Coffee/Vending
1	7120537	531339	150 Finest	Cartridge	1100	ø 115 x h415	60	HoReCa/Coffee
1	3010310	531341	300 Finest	Cartridge	1800	ø 135 x h470	60	HoReCa/Coffee
1	5072120	LF5072120	500 Finest	Cartridge	3414	ø 165 x h610	100	HoReCa/Coffee
1	3010311	531340	1100 Finest	Cartridge	6000	ø 190 x h610	100	HoReCa/Coffee
1	7151293	LF7151293	500 Steam	Cartridge	4675	ø 165 x h610	100	HoReCa/Steam
1	7151294	LF7151294	1100 Steam	Cartridge	7907	ø 190 x h610	100	HoReCa/Steam
1	7103080	530842	1000 AC	Cartridge	10000	ø 92 x h230	140	Coffee/Vending
1	5104435	LF5104435	50 Fresh	Cartridge	12000	ø 115 x h260	60	Dirt & Scale remover/Universal
2	3010609	LF3010609	25 Quell ST	Filter system	352	ø 115 x h210	30	HoReCa/Coffee/Vending
2	3010608	LF3010608	50 Quell ST	Filter system	690	ø 115 x h260	60	HoReCa/Coffee/Vending
2	3010605	530863	150 Quell ST	Filter system	2408	ø 115 x h415	60	HoReCa/Coffee/Vending
2	3010606	530864	300 Quell ST	Filter system	4000	ø 135 x h470	60	HoReCa/Coffee/Vending
2	3010607	LF3010607	500 Quell ST	Filter system	6800	ø 165 x h610	100	HoReCa/Coffee/Vending
2	7151296	LF7151296	1100 Quell ST	Filter system	11500	ø 190 x h610	100	HoReCa/Coffee/Vending
2	7151291	LF7151291	500 Steam	Filter system	4675	ø 165 x h610	100	HoReCa/Steam
2	7151292	LF7151292	1100 Steam	Filter system	7907	ø 190 x h610	100	HoReCa/Steam
3	7112089	LF7112089	1000 AC	Filter system	10000	ø 92 x h230	140	Coffee/Vending
4	7122470*	530865*	500 Quell ST	Filter system + 1st fit kit	6800	ø 165 x h610	100	HoReCa/Coffee/Vending
4	7122471*	LF7122471*	1100 Quell ST	Filter system + 1st fit kit	11500	ø 190 x h610	100	HoReCa/Coffee/Vending
4	7129810*	LF7129810*	500 Finest	Filter system + 1st fit kit	3414	ø 165 x h610	100	HoReCa/Coffee
4	7129811*	LF7129811*	1100 Finest	Filter system + 1st fit kit	6000	ø 190 x h610	100	HoReCa/Coffee
4	7122472*	LF7122472*	500 Steam	Filter system + 1st fit kit	4675	ø 165 x h610	100	HoReCa/Steam
4	7122473*	LF7122473*	1100 Steam	Filter system + 1st fit kit	7907	ø 190 x h610	100	HoReCa/Steam

\* Supplied with: 1 Purity C cartridge, 1 Purity C head with by-pass, 1 Flow counter (3/8"), 1 Input hose with stop valve - 2000mm (3/4"), 1 Output hose - 1500mm (3/4" - 3/8"), 1 Wall fixation, 1 Hardness water test kit

# CARTRIDGE FILTRATION SYSTEMS

## BRITA PURITY



1



2



3



4



5

Photo	LF Code	GEV Code	Model	Description	Capacity (L)	Dimensions (mm)	Standard water flow (L/h)	Most noted use
1	3010612	530856	Quell ST 450	Cartridge	4217	ø 249 x 408	60	HoReCa/Coffee/Vending
1	3010613	530845	Quell ST 600	Cartridge	7207	ø 249 x 520	120	HoReCa/Coffee/Vending
1	3010614	530846	Quell ST 1200	Cartridge	13187	ø 288 x 550	120	HoReCa/Coffee/Vending
1	3600070	532749	600 Finest	Cartridge	4400	ø 249 x 520	120	HoReCa/Coffee
1	3600075	532750	1200 Finest	Cartridge	8150	ø 288 x 550	120	HoReCa/Coffee
1	7112061	530867	Steam 450	Cartridge	3680	ø 249 x 408	120	HoReCa/Steam
1	3010257	530868	Steam 600	Cartridge	5771	ø 249 x 520	120	HoReCa/Steam
1	3010258	530869	Steam 1200	Cartridge	10800	ø 288 x 550	120	HoReCa/Steam
1	3010610	530378	Clean 1200	Cartridge	12000	ø 288 x 550	300	Clean
1	3010611	530849	Clean Extra 1200	Cartridge	5000	ø 288 x 550	300	Clean
2	5134988	530851	Quell ST 450	Filter system	4217	-	60	HoReCa/Coffee/Vending
2	5143987	530853	Quell ST 600	Filter system	7207	-	120	HoReCa/Coffee/Vending
2	5143988	530855	Quell ST 1200	Filter system	13187	-	120	HoReCa/Coffee/Vending
2	5107931	530858	Steam 450	Filter system	3680	-	120	HoReCa/Steam
2	3010218	530860	Steam 600	Filter system	5771	-	120	HoReCa/Steam
2	5143990	530862	Steam 1200	Filter system	10800	-	120	HoReCa/Steam
2	3010600	530379	Clean 1200	Filter system	12000	-	300	Clean
2	3010601	530848	Clean Extra 1200	Filter system	5000	-	300	Clean
3	3010602	530850	Quell ST 450	Filter system + display	4217	-	60	HoReCa/Coffee/Vending
3	3010603	530852	Quell ST 600	Filter system + display	7207	-	120	HoReCa/Coffee/Vending
3	3010604	530854	Quell ST 1200	Filter system + display	13187	-	120	Ho.Re.Ca
3	5143991	530857	Steam 450	Filter system + display	3680	-	120	HoReCa/Steam
3	5134986	530859	Steam 600	Filter system + display	5771	-	120	HoReCa/Steam
3	3010219	530861	Steam 1200	Filter system + display	10800	-	120	HoReCa/Steam
4	7123745	LF7123745	Steam 450	Filter system + display + 1st fit kit	3680	-	120	HoReCa/Steam
4	7123746	LF7123746	Steam 600	Filter system + display + 1st fit kit	5771	-	120	HoReCa/Steam
4	7126640	LF7126640	Steam 1200	Filter system + display + 1st fit kit	10800	-	120	HoReCa/Steam
5	7126592	LF7126592	Clean 1200	Filter system + 1st fit kit	12000	-	300	Clean
5	7126591	LF7126591	Clean Extra 1200	Filter system + 1st fit kit	5000	-	300	Clean

# CARTRIDGE FILTRATION SYSTEMS

## BWT BESTMAX



1



2



3

Photo	LF Code	GEV Code	Model	Description	Capacity (L)	Dimensions (mm)	Standard water flow (L/h)	Most noted use
1	3010702	530071	X	Cartridge	600	ø 88 x h270	60	HoReCa/Coffee/Vending
1	3010703	530072	S	Cartridge	1000	ø 88 x h350	60	HoReCa/Coffee/Vending
1	3010704	530073	V	Cartridge	2500	ø 110 x h410	60	HoReCa/Coffee/Vending
1	3010705	530074	M	Cartridge	3800	ø 130 x h465	60	HoReCa/Coffee/Vending
1	3010706	530075	L	Cartridge	5200	ø 147 x h490	60	HoReCa/Coffee/Vending
1	3010707	530076	XL	Cartridge	6800	ø 147 x h492	60	HoReCa/Coffee/Vending
1	7150446	530173	2XL	Cartridge	12000	ø 185 x h570	60	HoReCa/Coffee/Vending
2	5102348	LF5102348	S Premium	Cartridge	900	ø 88 x h350	60	Coffee/Vending/Beverage
2	5109668	530093	M Premium	Cartridge	3240	ø 130 x h465	60	Coffee/Vending/Beverage
2	5083869	530100	XL Premium	Cartridge	5160	ø 147 x h492	60	Coffee/Vending/Beverage
2	5081240	LF5081240	2XL Premium	Cartridge	8400	ø 185 x h570	60	Coffee/Vending/Beverage
2	5102347	LF5102347	10 Balance	Cartridge	800	ø 88 x h270	60	Coffee/Vending/Beverage
2	5081241	LF5081241	XL Soft	Cartridge	6800	ø 147 x h492	60	HoReCa/Beverage
2	5083868	LF5083868	2XL Soft	Cartridge	12000	ø 185 x h570	60	HoReCa/Beverage
2	5117694	LF5117694	25 Smart	Cartridge	3800	ø 110 x h383	60	Beverage
3	7105927	LF7105927	S	Filter system	1000	ø 88 x h350	60	HoReCa/Coffee/Vending
3	7105928	LF7105928	M	Filter system	3800	ø 130 x h465	60	HoReCa/Coffee/Vending
3	7105929	LF7105929	XL	Filter system	6800	ø 147 x h492	60	HoReCa/Coffee/Vending

## BWT OTHERS



1



2



3



4



5

Photo	LF Code	GEV Code	Model	Description	Capacity (L)	Dimensions (mm)	Standard water flow (L/h)	Most noted use
1	5097692	LF5097692	Bestprotect S	Cartridge	1000	ø 88 x h350	60	Steam
1	2103994	LF2103994	Bestprotect V	Cartridge	2500	ø 110 x h410	60	Steam
1	2103995	LF2103995	Bestprotect XL	Cartridge	6800	ø 147 x h492	60	Steam
1	2103996	LF2103996	Bestprotect 2XL	Cartridge	12000	ø 185 x h570	60	Steam
2	7150444	530359	Bestclear 2XL	Cartridge	9000	ø 147 x h492	60	Clean
2	5109669	530366	Bestclear Extra 2XL	Cartridge	3560	ø 185 x h570	200	Clean
3	7150445	LF7150445	Besttaste X	Cartridge	10000	ø 88 x h270	180	Coffee/Vending
3	5095863	LF5095863	Besttaste S	Cartridge	40000	ø 88 x h350	180	Coffee/Vending
4	5143996	521340	Bestcare S	Cartridge	12000	ø 88 x h350	200	HoReCa/Beverage
4	5098948	LF8098948	Bestdrink V	Cartridge	3570	ø 115 x h420	-	Fountain/Beverage
4	5086059	LF5086059	Bestmin M Premium	Cartridge	-	ø 130 x h465	-	Re-mineralization / pH correction
5	5144001	531360	Steamax XL	Cartridge	5155	ø 147 x h492	-	Steam

# CARTRIDGE FILTRATION SYSTEMS

## PENTAIR EVERPURE



LF Code	GEV Code	Model	Description	Capacity (L)	Dimensions (mm)	Standard water flow (L/h)	Most noted use
3600062*	530365*	OCS <sup>2</sup>	Cartridge	5678	ø 83 x h260	114	Beverage/Coffee
3600103*	530165*	MH <sup>2</sup>	Cartridge	34069	ø 83 x h369	378	Beverage/Coffee
3600032	530113	AC	Cartridge	2839	ø 83 x h260	114	Beverage/Fountain
3600001	530101	4C	Cartridge	11355	ø 83 x h369	114	Beverage/Fountain
3600034*	530933*	4C <sup>2</sup>	Cartridge	14763	ø 83 x h369	114	Beverage/Fountain/Vending
5144002*	530934*	AC <sup>2</sup>	Cartridge	5678	ø 102 x h260	114	Beverage/OCS/Vending
3010223	530171	ES06	Cartridge	1780	ø 83 x h369	114	Coffee/OCS/Vending
3010224	530172	ES07	Cartridge	2300	ø 83 x h527	114	Coffee/OCS/Vending
7123807*	530243*	BH <sup>2</sup>	Cartridge	11355	ø 83 x h369	114	Coffee/OCS/Vending
3600102*	530103*	4H	Cartridge	11355	ø 83 x h369	114	Coffee/OCS/Vending
3600111	530056	2Kplus	Cartridge	5678	ø 83 x h260	114	Foodservice/OCS/Vending
3600112	530177	4Kplus	Cartridge	11355	ø 83 x h369	114	Foodservice/OCS/Vending
3600060	530234	2CB5	Cartridge	11355	ø 83 x h260	228	Foodservice/OCS/Vending
3600061	530244	2CB5-S	Cartridge	11355	ø 83 x h260	228	Foodservice/OCS/Vending
3600108	530245	4CB5-S	Cartridge	22710	ø 83 x h369	378	Foodservice/OCS/Vending
3600106	530166	MC <sup>2</sup>	Cartridge	34069	ø 83 x h527	378	HoReCa/Beverage/Fountain
5062224	530247	i2000 <sup>2</sup>	Cartridge	34065	ø 83 x h527	378	Ice machine
5066861	530246	7CB5-S	Cartridge	37854	ø 83 x h527	570	Ice machine
3092331	LF3092331	2JT	Cartridge	-	ø 102 x h260	-	Sanitizing & flushing
5144004	530634	MR-600	Cartridge	2271 l/day	ø 83 x h635	95	Steam
3600107	530235	4CB5	Cartridge	22710	ø 83 x h369	378	Steam
5144005	530236	7CB5	Cartridge	37850	ø 83 x h527	378	Steam

\* Testing with the small bacterium *Pseudomonas diminuta* was performed by Vitens laboratory, the Netherlands, an ISO 17025 accredited lab. The tests were performed under test conditions specified in the ASTM F838-05 protocol for the validation of 0.2 µm sterilizing grade filters.

## PENTAIR EVERPURE CLARIS



Photo	LF Code	GEV Code	Model	Description	Capacity (L)	Dimensions (mm)	Standard water flow (L/h)	Most noted use
1	3600036	530204	S	Cartridge	1710	ø 95 x h365	114	Universal
1	3600037	530205	M	Cartridge	3002	ø 95 x h475	114	Universal
1	3600038	530206	L	Cartridge	5016	ø 136 x h410	222	Universal
1	3600039	530207	XL	Cartridge	7192	ø 136 x h525	222	Universal
1	7114457	530208	XXL	Cartridge	13200	ø 175 x h525	222	Universal
2	5140194	530390	Ultra 170	Cartridge	1700	ø 83 x h255	120	Coffee/Beverage/Fountain
2	5144009	530385	Ultra 250	Cartridge	2500	ø 95 x h365	120	Coffee/Beverage/Fountain
2	7121318	530386	Ultra 500	Cartridge	4200	ø 95 x h475	120	Coffee/Beverage/Fountain
2	7121319	530387	Ultra 1000	Cartridge	8500	ø 136 x h410	120	Coffee/Beverage/Fountain
2	7121320	530388	Ultra 1500	Cartridge	12100	ø 136 x h525	222	Coffee/Beverage/Fountain
2	5094242	530389	Ultra 2000	Cartridge	20000	ø 175 x h525	222	Coffee/Beverage/Fountain

# CARTRIDGE FILTRATION SYSTEMS

## PENTAIR OTHERS



1



2



3



4



5



6

Photo	LF Code	GEV Code	Model	Description	Capacity (L)	Dimensions (mm)	Standard water flow (L/h)	Most noted use
1	3010201	530157	KleenSteam SR-X + 4CB5	Filter system	22710	500 x 175 x h750	360	Steam
2	7100906	530200	KleenSteam SR-X	Cartridge	60000	131 x 139 x h315	1362	Scale inhibitor
3	5144013	530198	KleenSteam SS-10	Filter	60000	ø 80 x h230	360	Scale inhibitor
3	5144014	530254	KleenSteam SS-IMF	Filter	80000	ø 34 x h230	360	Scale inhibitor
4	5144016	530144	BWSO 2000	Filter system	486	300 x 110 x h625	115	Universal
5	5144017	530145	BWSO 7000	Filter system	2335	275 x 200 x h625	114	Universal
6	5144018	530111	BWSO 2000	Cartridge	486	ø 83 x h530	115	Universal

## 3M CUNO



LF Code	GEV Code	Model	Description	Most noted use
5112695	530478	AP2-C405-SG	Cartridge	Universal
5112483	530015	CS-51	Cartridge	Universal
5144020	530258	HF30-S	Cartridge	Universal
5144021	530011	CFS-9812-X	Cartridge	Universal
5144022	530255	AP3-C765-E	Cartridge	Universal
5144023	530009	CFS-517-LS	Cartridge	Universal
5118623	530377	AP1-C301-S	Cartridge	HoReCa/Coffee/Vending
5118624	LF5118624	AP2-C401-G	Cartridge	HoReCa/Coffee/Vending
5144030	530078	AP2-C401-SG	Cartridge	HoReCa/Coffee/Vending
5112490	530020	P124-BNE	Cartridge	HoReCa/Coffee/Vending
5144032	530012	CS-14	Cartridge	HoReCa/Coffee/Vending
5144034	530022	CS-11	Cartridge	HoReCa/Coffee/Vending
5144036	530010	CS-25	Cartridge	HoReCa/Beverage/Fountain
5144037	530271	HF10-MS	Cartridge	HoReCa/Beverage/Fountain
5144038	530256	AP3-C762-M	Cartridge	HoReCa/Beverage/Fountain
5144039	530018	SWC-9135	Cartridge	HoReCa/Beverage/Fountain
5144040	531288	HF40-S	Cartridge	Ice machine
5144041	530091	HF20-SE	Cartridge	Ice machine
5112486	LF5112486	HF25-MS	Filter system	Universal
7125506	530519	CS-451	Filter system	HoReCa/Coffee/Vending

# CARTRIDGE FILTRATION SYSTEMS

## PROFINE



1



2



3



4

Photo	LF Code	GEV Code	Model	Description	Capacity (L)	Dimensions (mm)	Standard water flow (L/h)	Most noted use
1	3600208	LF3600208	Odra medium	Cartridge	1100	ø 87.5 x h384	120	Universal
1	3600209	LF3600209	Odra large	Cartridge	1600	ø 87.5 x h529	150	Universal
2	3600200	LF3600200	Blue small	Cartridge	15000	ø 87.5 x h269	180	Chlorine & turbidity
2	3600201	LF3600201	Blue medium	Cartridge	24000	ø 87.5 x h384	300	Chlorine & turbidity
2	3600202	LF3600202	Blue large	Cartridge	45000	ø 87.5 x h529	420	Chlorine & turbidity
3	3600203*	LF3600203*	Silver small	Cartridge	15000	ø 87.5 x h269	180	Bacteria, chlorine & turbidity
3	3600204*	LF3600204*	Silver medium	Cartridge	24000	ø 87.5 x h384	300	Bacteria, chlorine & turbidity
3	3600205*	LF3600205*	Silver large	Cartridge	45000	ø 87.5 x h529	420	Bacteria, chlorine & turbidity
4	3600207	LF3600207	Arsenic large	Cartridge	20000	ø 87.5 x h529	120	Arsenic

\* ANTI BACTERIAL: Thanks to the presence of silver ions, the antibacterial action downstream of the treatment system is guaranteed

## OMNIPURE



LF Code	GEV Code	Model	Description	Capacity (L)	Dimensions (mm)	Standard water flow (L/h)	Most noted use
3010167	LF3010167	Aquabond Q5386	Cartridge	3785	ø 63 x h152	114	Universal
2105778	LF2105778	Aquabond Q5586	Cartridge	5678	ø 63 x h265	114	Universal
3010168	LF3010168	Aquabond Q5320	Cartridge	5678	ø 63 x h152	114	Chlorine & turbidity
7124105	LF7124105	Aquabond ELF 5M	Cartridge	37854	ø 80 x h323	380	Chlorine & turbidity

## BILT



1



2



3



4



5

Photo	LF Code	GEV Code	Model	Description	Capacity (L)	Dimensions (mm)	Most noted use
1	3010174	530502	B52	Filter system	4200	ø 150 x h359	Universal
2	3010185	530504	B58 MX	Filter system	7000	ø 150 x h439	Universal
3	3010172	530500	B52 32	Filter system	1500	ø 150 x h359	Vending
4	3010173	530501	B52 MX	Filter system	3000	ø 150 x h359	Vending
5	3010179	530503	B58 MX	Filter system	5700	ø 150 x h439	Vending



# CARTRIDGE FILTRATION SYSTEMS

## WCF



1



2



3

Photo	LF Code	GEV Code	Model	Description	Capacity (L)	Dimensions (mm)	Standard water flow (L/h)	Most noted use
1	2110551	LF2110551	Refiner 250	Cartridge	10000	ø 79 x h260	200	Chlorine & turbidity
2	3600052	LF3600052	Refiner 350	Cartridge	15000	ø 79 x h375	350	Chlorine & turbidity
3	3600053	LF3600053	Refiner 500	Cartridge	35000	ø 79 x h525	420	Chlorine & turbidity

## DEDICATED VERSIONS



1



2



3



4



5



6

Photo	LF Code	GEV Code	Model	Description	Capacity (L)	Dimensions (mm)	Most noted use
1	5144042	530953	CTU Vapour 23	Watercare filter system	17914	ø 270 x h660	20 Grid combi oven
2	7103139	530269	AquaCure Hydro+ H60FB	Hydro+ cartridge	-	ø 50 x h155	Roller Grill FRP
3	7115507	530923	Everpure 4HC-H	Pentair Everpure cartridge	79485	ø 83 x h380	Hoshizaki
4	5144030	530078	3M FC02	3M Cuno cartridge	4000	ø 57 x h250	Lincat
5	7120559	971203	AC-M	Winterhalter cartridge	4800	-	Winterhalter AT-S/M
6	7102821	520873	Romatik XS puRO	Winterhalter cartridge	12600	-	Winterhalter RoMatik XS

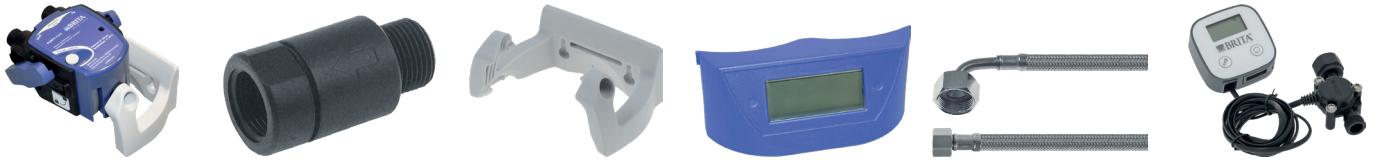
## HIGH VOLUME DEDICATED VERSION



LF Code	GEV Code	Manufacturer	Model	Note
3600081	531370	3M Cuno	CFS 8805EL-M	-
5144021	530011	3M Cuno	CFS 9812X (MC)	0,5µ
3600082	531369	3M Cuno	CFS 9812X-S (MH)	-
3600083	531371	3M Cuno	CFS 8000-SM	-
3600084	531376	3M Cuno	DP190	-
3600085	531375	3M Cuno	DP290	-
3600086	531372	3M Cuno	2 x HF 90 + 1 x HF 8-S	for DP290
3600087	531373	3M Cuno	1 x HF90 + 1 x HF8-S	for DP290
3600088	531374	3M Cuno	HF 8S	for DP190 & DP290
3600089	531377	3M Cuno	CFS 9005	-
3600090	531378	3M Cuno	CFS 110-C19	250 mm - 2 pcs
5148962	531379	3M Cuno	CFS 110-C20	510 mm
5125783	531380	Pentair Everpure	A-EC210	20 pcs
5144014	530254	Pentair Everpure	SS-IMF	12 pcs
3600091	531381	Pentair Everpure	Endurance HF Twin System	-
3600092	531382	Pentair Everpure	filter kits for Endurance HF Twin System	-

# CARTRIDGE FILTRATION SYSTEMS SPARE PARTS

## BRITA SPARE PARTS



LF Code	GEV Code	Description	Model
7151295	LF7151295	Filter head BRITA G 3/8"	Purity C Steam
7120538	LF7120538	Filter head BRITA G 3/8"	Purity C 0%
3010623	530836	Filter head BRITA 3/8" type PURITY C water temp. +4 up to +30°C	Purity C 30%
3600067	LF3600067	Filter head BRITA JG8	Purity C 30%
3010622	530464	Filter head BRITA 3/8" type PURITY C water temp. +4 up to +30°C	Purity C 0-70%
7151297	530456	Filter head BRITA JG 8 mm type PURITY C	Purity C 0-70%
7120539	543007	Backflow preventer plastic thread 3/8" IT - 3/8" ET length 46mm	Purity C
5134989	530840	Wall holder suitable for PURITY C	Purity C
5107908	520542	Reducer IT 3/8" ET 3/4" plastic length 30 mm WS 22 with gasket	Purity C
5107932	698668	Shut-off valve IT 1" ET 3/4"	Purity
7125456	698670	Display for MAE	Purity
5114702	520583	Hose DN8 3/8"- 3/4" bend, 1.5m	Purity/Purity C
5067647	530055	Flowmeter with digital display 3/8" IT - 3/8" total length 80 mm	10-100
5107907	520541	Flex hose SS braid straight-curved DN8 L 1500 mm	Brita
3600068	LF3600068	Flex hose 3/4" - 3/8" 1500 mm	Brita
5107929	520748	Flex hose 3/8" DN8 L 1500 mm SS with shut-off valve	Brita
3010220	LF3010220	Hose clamp kit	Brita
5107843	520584	Flex hose SS straight-curved DN12 3/4" - 3/4" L 2000 mm	Brita
5134995	520749	Shut-off valve IT 3/8" ET 3/4"	Brita
3010070	530381	Flowmeter 3/4"M-3/4"F model 100-700A	Brita

## BWT SPARE PARTS



Photo	LF Code	GEV Code	Description	Model
1	5109672	530549	Connection set type bestmax "all in one" water + more	Bestmax
2	3010708	LF3010708	Liter counter acquameter water+more made of chrome-plated brass	BWT
3	7114072	LF7114072	Installation set	BWT
4	3010700	530070	Filter head type besthead thread 3/8"	BWT
5	3010701	530090	Type bestflush thread 3/8" for filter head	BWT

# CARTRIDGE FILTRATION SYSTEMS SPARE PARTS

## PENTAIR SPARE PARTS



LF Code	GEV Code	Description	Model
3092321	530097	Descaling agent ScaleKleen 50g bag	ScaleKleen 50
3092322	530098	Descaling agent ScaleKleen 200g bag	ScaleKleen 200
3092323	530099	Descaling agent ScaleKleen 1000g can	ScaleKleen 1000
5144043	530118	Detergent 4JT ø 80mm H 368mm can EVERPURE	ScaleKleen 4JT
3600104	530115	Filter head EVERPURE type QL2 3/8" horizontal without shut-off valve	Everpure QL2B
5054496	530248	Filter head EVERPURE type QL2B 3/8" horizontal without shut-off valve	Everpure QL2B
3600002	530106	Filter head EVERPURE type QL3 3/8" vertical with shut-off valve	Everpure QL3B
3600035	530249	Filter head EVERPURE type QL3B 3/8" vertical with shut-off valve	Everpure QL3B
5109966	530790	Filter head EVERPURE type 3/8" vertical	Everpure QC71
5144045	530496	By-pass plug for cleaning for Everpure filter system	Everpure
3600041	530889	EVERPURE type Claris 3/8" BSP left/right H 138mm	Claris
3600044	LF3600044	Liter counter ø 3/8"	Claris
3600043	520946	Flex hose ø 3/8" Fp x 3/4" Fp 1500 mm	Everpure QL

## 3M CUNO SPARE PARTS



1



2



3

Photo	LF Code	GEV Code	Description
1	5144046	530272	Filter head CUNO type VH3 BSPT 3/8" horizontal without shut-off valve
2	5144048	530497	By-pass plug for cleaning for 3M filter system
3	5144050	530499	By-pass plug for cleaning for Cuno filter system

## PROFINE SPARE PARTS



1



2



3



4

Photo	LF Code	GEV Code	Description
1	3600210	LF3600210	Filter head for Profine connection ø 10mm pipe snap-on Qmax. 10l/min
2	3600211	LF3600211	Filter head for Profine connection ø 10mm pipe snap-on Qmax. 10l/min
3	3600212	LF3600212	Resin PROFINE head medium
4	3600213	LF3600213	Resin PROFINE head large

# CARTRIDGE FILTRATION SYSTEMS SPARE PARTS

## OMNIPURE SPARE PARTS



1

Photo	LF Code	GEV Code	Description
1	3010169	LF3010169	Cartridge filter head with integrated control valve $\varnothing$ 3/8" NPTF
1	3010170	LF3010170	Cartridge filter head with integrated control valve $\varnothing$ 1/4"

## BILT SPARE PARTS



1

2

3

4

Photo	LF Code	GEV Code	Description
1	3010190	530505	Connection head type BYP with bypass blend 10% connection 3/8" ( $\varnothing$ 10mm)
2	3010195	530774	Connecting fitting type connection 3/8" L 27 mm
3	5054911	530506	Connecting fitting type R 8-3/8 connection 3/8" L 30 mm
4	2102850	LF2102850	Support bracket

## WCF SPARE PARTS



1

Photo	LF Code	GEV Code	Description
1	3600049	LF3600049	Quick connection head

# IN-LINE FILTRATION CARTRIDGES

## PENTAIR



LF Code	GEV Code	Model	Description	Capacity (L)	Dimensions (mm)	Standard water flow (L/h)	Most noted use
5111365	530521	Everpure IN-10	9080	John Guest 1/4"	ø 51 x 270	180	Fountain/Beverage/OCS
7109184	LF7109184	Everpure IN-10CS	12522	1/4"	ø 51 x 270	180	Fountain/Beverage/OCS
7118594	LF7118594	Pentek GS-10RO	12500	John Guest 1/4"	ø 51 x 270	120	Fountain/Beverage/OCS
7111715	LF7111715	Pentek IC-101L	14800	1/4"	ø 51 x 270	180	Fountain/Beverage/OCS
7111717	LF7111717	Pentek TS-101L	6400	1/4"	ø 51 x 270	170	Fountain/Beverage/OCS

## OMNIPURE



LF Code	GEV Code	Model	Description	Capacity (L)	Dimensions (mm)	Standard water flow (L/h)	Most noted use
3010064	LF3010064	Aquabond K2586CCA SCL10	4732	3/8"	ø 51 x 270	114	Universal
3010158	LF3010158	Aquabond K2520PCC	4732	3/8"	ø 51 x 270	114	Universal
2103007	LF2103007	Aquabond K2520PJJ	4732	John Guest 6 mm	ø 51 x 270	114	Universal
3010139	LF3010139	Aquabond K2586BB SCL10	4732	1/4"	ø 51 x 270	114	Universal
3010156	LF3010156	Aquabond K2586LL0	4732	John Guest 1/4"	ø 51 x 270	114	Universal
7116660	LF7116660	Aquabond K2586SS	4732	John Guest 1/4"	ø 51 x 270	114	Universal
3010165	LF3010165	Aquabond K5515SS0	4732	John Guest 1/4"	ø 51 x 270	114	Universal
3010140	LF3010140	Aquabond K2505CC	-	3/8"	ø 51 x 270	170	Dirt & Scale remover
3010178	LF3010178	Aquabond K2505SS	-	John Guest 1/4"	ø 51 x 270	170	Dirt & Scale remover
3010166	LF3010166	Aquabond K5605SS0	-	John Guest 1/4"	ø 51 x 270	114	Dirt & Scale remover
3010065	LF3010065	Aquabond K2553BB	-	1/4"	ø 51 x 270	114	Re-mineralization / pH correction

## OTHERS



Photo	LF Code	GEV Code	Model	Description	Capacity (L)	Dimensions (mm)	Standard water flow (L/h)	Most noted use
1	5095299	LF5095299	10" In Line Carbone Silver	5678	1/4"	ø 51 x 270	170	Heavy metals / Chlorine
2	5095297	LF5095297	10" In Line Carbone Gold	5678	1/4"	ø 51 x 270	170	Heavy metals / Chlorine
3	5144051	530941	Instanta	5000	3/4"	ø 51 x 270	170	Fountain/Beverage/OCS

# OCS WATER FILTERS

## IMMERSED TANK FILTERS



1



2



3



4



5

Photo	LF Code	GEV Code	Brand	Model	Capacity (L)	Max Tank Volume (L)	Application
1	3010287	699636	Brita	Aquagusto 100	100	1.5	OCS
1	3010288	699637	Brita	Aquagusto 250	250	1.5	OCS
2	7107733	LF7107733	Brita	Aqua Aroma	150	-	OCS
3	3010709	LF3010709	BWT	Bestsave S	50	1.5	OCS
3	3010710	LF3010710	BWT	Bestsave M	100	3.5	OCS
4	3010711	LF3010711	BWT	Bestsave L	200	5	OCS
5	3010402	530507	Bilt	Oscar 60	100	1	OCS
5	3010202	530508	Bilt	Oscar 90	225	2	OCS
5	3010215	530509	Bilt	Oscar 150	410	4	OCS
5	3010217	530510	Bilt	Oscar 300	825	6	OCS

## WATER TANK FILTERS



1



2



3



4



5



6

Photo	LF Code	GEV Code	Brand	Model	Capacity (L)	Application
1	3010274	LF3010274	Brita	Aqua Aroma Crema	150	OCS
1	3010280	LF3010280	Brita	Aqua Aroma Crema	150	OCS
2	3010281	LF3010281	Brita	Aqua Aroma Crema	-	OCS
3	3010279	LF3010279	Brita	Aqua Aroma Crema	-	OCS
4	3010303	530511	Bilt	Nical 125	25	OCS
4	3010307	530512	Bilt	Nical 250	50	OCS
4	3010226	530513	Bilt	Nical 450 B	75	OCS
4	3010231	530514	Bilt	Nical 900 B	150	OCS
4	3010412	530515	Bilt	Nical Demi	108	OCS
4	3010411	530516	Bilt	Nical Midi	150	OCS
4	3010410	530517	Bilt	Nical MX	450	OCS
4	1160005	LF1160005	GS	OCS	Reusable	OCS
5	3010289	LF3010289	Jura	Claris White	60	Jura OCS
5	5093168	LF5093168	Jura	Claris Smart	60	Jura OCS
5	5093167	LF5093167	Jura	Claris Blue	60	Jura OCS
6	1160082	530535	DéLonghi	DLSC002	150	OCS
6	1010003	LF1010003	Brita	Intenza + (GAGGIA)	150	Gaggia OCS
6	1010002	LF1010002	Brita	Intenza + (SAECO)	150	Saeco OCS
6	5050501	LF5050501	Brita	Intenza + (LAVAZZA)	150	Lavazza OCS
6	3010290	LF3010290	Saeco	Aqua Clean	100	Saeco OCS

# PRE-FILTRATION

## AQUA

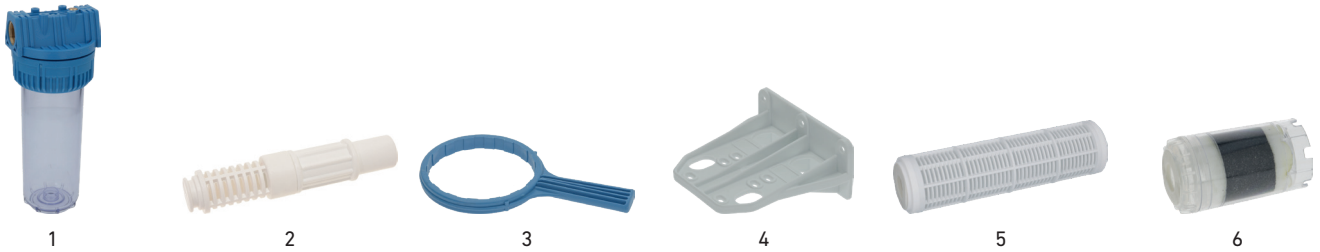


Photo	LF Code	GEV Code	Model	Description	Size	Connections	Dimensions (mm)	Efficiency
1	3160441	LF3160441	FP2/FP3	Container for cartridges	5"	3/4"F	ø 122 x h189	-
1	3160439	LF3160439	FP2/FP3	Container for cartridges	5"	1/2"F	ø 122 x h189	-
1	3160444	LF3160444	FP2/FP3	Container for cartridges	9"3/4	1"F	ø 122 x h311	-
1	3160442	LF3160442	FP2/FP3	Container for cartridges	9"3/4	3/4"F	ø 122 x h311	-
1	3160440	LF3160440	FP2/FP3	Container for cartridges	9"3/4	1/2"F	ø 122 x h311	-
1	3160445	LF3160445	FP2/FP3	Container for cartridges	20"	1"F	ø 122 x h571	-
1	3160443	LF3160443	FP2/FP3	Container for cartridges	20"	3/4"F	ø 122 x h571	-
2	3160541	LF3160541	FP2/FP3	Diffuser hose for filters	5"	-	-	-
2	3160542	LF3160542	FP2/FP3	Diffuser hose for filters	9"3/4	-	-	-
3	3160460	LF3160460	FP2/FP3	Plastic spanner for filters	-	-	-	-
4	3160461	LF3160461	FP3	Single bracket for filters	-	-	-	-
5	3160446	LF3160446	RLA	Plastic cartridge	5"	ø ext. 65 x ø int. 27 x h127	80	80%
5	3160447	LF3160447	RLA	Plastic cartridge	9"3/4	ø ext. 65 x ø int. 27 x h127	80	80%
5	3160448	LF3160448	RLA	Plastic cartridge	20"	ø ext. 65 x ø int. 27 x h508	80	80%
5	3160452	LF3160452	FA	Wire cartridge	5"	ø ext. 61 x ø int. 28 x h127	20	80%
5	3160449	LF3160449	FA	Wire cartridge	2 cartridges - 5"	ø ext. 61 x ø int. 28 x h127	20	80%
5	3160453	530189	FA	Wire cartridge	9"3/4	ø ext. 61 x ø int. 28 x h247	20	80%
5	3160450	LF3160450	FA	Wire cartridge	9"3/4	ø ext. 61 x ø int. 28 x h247	5	80%
5	3160454	LF3160454	FA	Wire cartridge	20"	ø ext. 61 x ø int. 28 x h508	20	80%
5	3160451	LF3160451	FA	Wire cartridge	20"	ø ext. 61 x ø int. 28 x h508	5	80%
5	3160458	LF3160458	CTO-E	Carbon block cartridge	9"3/4	ø ext. 72 x ø int. 26 x h247	10	95%
5	3160459	LF3160459	CTO-E	Carbon block cartridge	20"	ø ext. 72 x ø int. 26 x h508	10	95%
6	3160455	LF3160455	CA-POST20	Activated carbon cartridge	5"	ø ext. 72 x ø int. 27 x h127	20	75%
6	3160456	LF3160456	CA-POST20	Activated carbon cartridge	9"3/4	ø ext. 72 x ø int. 27 x h247	20	75%
6	3160457	LF3160457	CA-POST20	Activated carbon cartridge	20"	ø ext. 72 x ø int. 27 x h508	20	75%

# PRE-FILTRATION

## OTHERS



LF Code	GEV Code	Model	Description	Size	Connections	Dimensions (mm)	Efficiency
5144054	530183	NK 1	Container for cartridges	1/2"	ø 180 x h180	-	-
5144053	530182	NK 1	Container for cartridges	Kit - 3/8"	-	-	-
5067453	530188	NK 2	Container + cartridges + accessories	Kit - 3/4"	ø 180 x h306	-	-
5144056	530186	NK 1	Wire cartridge	-	ø 58 x h125	50	80
3160453	530189	NK 2	Wire cartridge	-	ø 61 x h247	50	80
5144058	530187	NK	Plastic spanner for filters	-	-	-	-
5111334	532141	NK	O-ring EPDM	10 pcs	thickness 3.53 x in ø 88.5	-	-
5144059	530179	NK	Filter connection	1/2"	ø 59 x 58	-	-
3010301	LF3010301	Mini	Pinko scale remover	8 mm	ø 50 x h60	-	-
3010302	LF3010302	Maxi	Pinko scale remover	3/8"	ø 50 x h100	-	-
3010306	LF3010306	Pinko	Container connectors + bracket	3/8" - 8 mm	-	-	-



## PITCHERS



1



2



3



4



5

Photo	LF Code	GEV Code	Description	Brand	Model	Capacity	Notes	Application
1	5088440	530352	Filter pitcher	BWT	Longlife MG2+	2.7L	With 1 cartridge	Table service
2	5109670	530457	Cartridges for filter pitcher	BWT	Longlife MG2+	120L	3 pcs	Table service
3	5084879	530353	Cartridges for filter pitcher	BWT	Longlife Tea & Coffee	120L	3 pcs	Table service
4	5097259	LF5097259	Filter pitcher	Brita	Fjord white	2.6L	With 1 cartridge	Table service
4	5097260	LF5097260	Filter pitcher	Brita	Marella red	2.6L	With 1 cartridge	Table service
5	D600034	530952	Cartridges for filter pitcher	Brita	Maxtra +	100L	3 pcs	Table service
5	5144067	530968	Cartridges for filter pitcher	Brita	Maxtra +	100L	5 pcs	Table service
5	5144069	530967	Cartridges for filter pitcher	Brita	Maxtra +	100L	10 pcs	Table service

# INLET PIPES

## STAINLESS STEEL INLET PIPES WITH CONICAL FITTINGS



Photo	LF Code	GEV code	Connections	Length (mm)	internal ø (mm)	Max temperature (°C)	Max pressure (bar)
1	1449706	520616	1/8"F - 1/8"F	370	6	90	10
1	1449707	520617	1/8"F - 1/8"F	1500	6	90	10
1	1449249	LF1449249	1/4"F - 1/4"F (ACS)	190	8	90	10
1	1449269	LF1449269	1/4"F - 1/4"F (NSF)	280	6	90	10
1	5019507	LF5019507	1/4"F - 1/4"F	300	8	90	10
1	1449238	520149	1/4"F - 1/4"F (NSF)	320	6	90	10
1	1449239	LF1449239	1/4"F - 1/4"F	325	6	90	10
1	5014643	LF5014643	1/4"F - 1/4"F	450	6	90	10
1	5025958	LF5025958	1/4"F - 1/4"F	500	6	90	10
2	5024776	LF5024776	3/8"F - 1/4"F (NSF)	250	8	90	10
2	1449275	LF1449275	3/8"F - 3/8"F (NSF)	330	8	90	10
2	1449241	520299	3/8"F - 3/8"F (ACS)	450	8	90	10
2	1449276	LF1449276	3/8"F - 3/8"F (NSF)	450	8	90	10
2	1449293	LF1449293	3/8"F - 3/8"F (NSF)	450	8	90	10
2	1449722	520572	3/8"F - 3/8"F	500	8	90	10
2	1449277	LF1449277	3/8"F - 3/8"F (NSF)	530	8	90	10
2	1449278	LF1449278	3/8"F - 3/8"F (NSF)	630	8	90	10
2	1449242	LF1449242	3/8"F - 3/8"F (ACS)	700	8	90	10
2	1449237	LF1449237	3/8"F - 3/8"F (NSF)	710	8	90	10
2	1449705	520600	3/8"F - 3/8"F	750	8	90	10
2	1449226	LF1449226	3/8"F - 3/8"F (NSF)	800	8	90	10
2	1449723	520601	3/8"F - 3/8"F	1000	8	90	10
2	1449229	LF1449229	3/8"F - 3/8"F (NSF)	1000	8	90	10
2	1449230	LF1449230	3/8"F - 3/8"F (NSF)	1200	8	90	10
2	1449725	520602	3/8"F - 3/8"F	1500	8	90	10
2	1449243	LF1449243	3/8"F - 3/8"F (ACS)	1500	8	90	10
2	1449292	LF1449292	3/8"F - 3/8"F (NSF)	1500	8	90	10
2	1449218	520603	3/8"F - 3/8"F	2000	8	90	10
2	1449260	520603	3/8"F - 3/8"F (NSF)	2300	8	90	10
2	1449261	LF1449261	3/8"F - 3/8"F (NSF)	2800	8	90	10
3	1449244	LF1449244	3/8"F - 3/8"F (ACS)	250	8	90	10
3	1449245	LF1449245	3/8"F - 3/8"F (ACS)	310	8	90	10
3	1449233	LF1449233	3/8"F - 3/8"F (NSF)	385	8	90	10
3	1449266	LF1449266	3/8"F - 3/8"F	385	8	90	10
3	1449732	520604	3/8"F - 3/8"F	500	8	90	10
3	1449234	LF1449234	3/8"F - 3/8"F (NSF)	500	8	90	10
3	1449235	LF1449235	3/8"F - 3/8"F (NSF)	880	8	90	10
3	1449734	520605	3/8"F - 3/8"F	1000	8	90	10
3	1449736	520606	3/8"F - 3/8"F	1500	8	90	10
3	3449300	LF3449300	1/2" Fp x CFp	1500	8	90	10
3	1449232	LF1449232	3/8"F - 3/8"F (NSF)	1600	8	90	10
3	1449246	LF1449246	3/8"F - 3/8"F (ACS)	1600	8	90	10
3	1449737	520607	3/8"F - 3/8"F	2000	8	90	10
3	5500682	LF5500682	3/8"F - 3/8"F	2200	8	90	10
4	1449702	520634	3/8"M - 3/8"M	500	8	90	10
5	1449258	LF1449258	3/8"M - 3/8"F (NSF)	350	8	90	10
5	7102087	LF7102087	3/8"M - 3/8"F	380	8	90	10
5	1449259	LF1449259	3/8"M - 3/8"F (NSF)	1200	8	90	10
6	1449247	LF1449247	3/8"F - 3/8"F (ACS)	250	8	90	10
6	1449248	LF1449248	3/8"F - 3/8"F (ACS)	480	8	90	10





**GEV Großküchen-Ersatzteil-Vertrieb GmbH**

Gadastr. 4  
85232 Bergkirchen - Germany  
T +49 8142 6522-50  
info@gev-online.com  
www.gev-online.com

**LF S.p.A. a socio unico**

Via Voltri 80  
47522 Cesena FC - Italy  
T +39 0547 341111  
info@lfspareparts.com  
www.lfspareparts724.com

**EPGC S.a.s.**

13 Rue des Forts  
59960 Neuville en Ferrain - France  
T +33 3 20250621  
epgc@epgc.com  
www.epgc.com

**Commercial Catering Spares Ltd.**

Block C - Axis Point Hill Top Road  
Heywood - Lancashire - OL10 2RQ - UK  
T +44 1706 621 155  
info@ccspares.co.uk  
www.ccspares.co.uk

**Atel S.r.l. a socio unico**

Via Selvuzzis 51/2  
33100 Udine UD - Italy  
T +39 0432 602095  
info@atelitalia.com  
www.atelitalia.com

LF3CA01

P021823000

