

# Authorised Distributor for Wega Original Spare Parts

A selection of the most popular spares



*More original  
than ever*

# Wega original spare parts



LF Code: 1057064  
GEV Code: 10077294

## SELECTOR SWITCH 0-1 POSITIONS 20A 400V

square pin 5x5 mm



LF Code: 1165226  
GEV Code: LF1165226

## FILTER HOLDER COMPLETE 2 CUP WEGA

spouts connection  $\varnothing$  3/8"  
handle connection M12  
wings 7 mm  
without spring  
without filter



LF Code: 5071850  
GEV Code: 528088

## FILTER HOLDER COMPLETE 2 CUPSE WEGA

spouts connection  $\varnothing$  3/8"  
knob connection M12  
wings 6.4 mm  
without spring or filter  
wings length 27 mm  
filter holder  $\varnothing$  69 mm  
filter holder  $\varnothing$  82 mm (with  
wings)  
inclined handle



LF Code: 1245144  
GEV Code: LF1245144

## PRESSURE GAUGE FOR BOILER/PUMP $\varnothing$ 63 mm

double scale 0÷3/0÷15 bar  
connections  $\varnothing$  1/8 "M  
frame  $\varnothing$  69 mm - body  $\varnothing$  63 mm  
made of brass CW510L (OT57)  
low lead content



LF Code: 1319238  
GEV Code: 400510

## PUSH-BUTTON PANEL 4 BUTTONS

2 push-buttons  
2 switches



LF Code: 1390263  
GEV Code: 10077280

## DISPLAY GRAPHIC BOARD TFT 5"

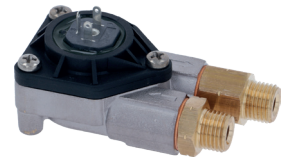
dimensions 157x86 mm



LF Code: 1165228  
GEV Code: LF1165228

## FILTER HOLDER COMPLETE 2 CUP WEGA

spouts connection  $\varnothing$  3/8"  
handle connection M12  
wings 6 mm  
without spring  
without filter



LF Code: 1455106  
GEV Code: 10077267

## VOLUMETRIC METER GICAR WEGA

connections 1/4" with MM  
fittings  
orifice 1.15mm



LF Code: 1460190  
GEV Code: 10077283

## COMPETITION FILTER ST./ STEEL 2CUPS 14 gr H24.5

edge  $\varnothing$  70 mm  
height 24.5 mm  
circular holes with conical  
section  
steel Aisi 304 - food-grade  
certified  
matching tamper  $\varnothing$  58 mm



LF Code: 1515070  
GEV Code: 10074044

## BOILER VALVE $\varnothing$ 3/8" M 1.9bar CE-PED

set pressure 1.9 bar  
made of brass CW510L (OT57)  
low lead content



LF Code: 1755414  
GEV Code: 10076352

## HEATING ELEMENT 3000/3266W 230/240V

immersion depth 325 mm  
6 poles  
fixing hole spacing 75 mm  
with cup holder  
flange 95x57 mm  
for coffee machines with 2  
groups  
made of brass CW510L (OT57)  
low lead content



LF Code: 1786538  
GEV Code: 10073781

## OR-GASKET 02031 HNBR WEGA

ring thickness 1.78 mm  
internal  $\varnothing$  7.66 mm

# Wega original spare parts



LF Code: 5036223  
GEV Code: 527757

## WATER TAP KNOB

for COFFEE MACHINE VELA



LF Code: 5067276  
GEV Code: LF5067276

## ADHESIVE PLATE WEGA

dimensions 85x30 mm



LF Code: 1165471  
GEV Code: 10077290

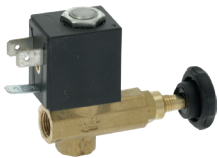
## FILTER HOLDER COMPLETE 1 CUP WEGA

spout connection  $\varnothing$  3/8"  
handle connection M12  
wings 5.7 mm  
with spring and filter  
wings length 26 mm  
filter holder  $\varnothing$  69 mm  
filter holder  $\varnothing$  80 mm (with wings)  
inclined handle



LF Code: 5189617  
GEV Code: 10074630

## PUSH-BUTTON MEMBRANE 5-BUTTONS POLARIS



LF Code: 5189820  
GEV Code: 10074608

## SOLENOID VALVE AEA FLOW REGULATION

230V 50Hz



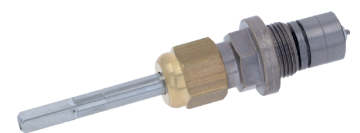
LF Code: 5189837  
GEV Code: 10073852

## LEVEL REGULATOR RL30 220/240V WEGA



LF Code: 1319085  
GEV Code: 400514

## PUSH-BUTTON PANEL 1 BUTTON



LF Code: 1548190  
GEV Code: 10077268

## PIVOT ROD FOR WATER/STEAM TAP

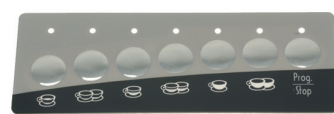
pin length 50 mm  
made of brass CW510L (OT57)  
with low lead content  
and teatura-treated



LF Code: 5189595  
GEV Code: 10077213

## WATER LOADING TAP

made of brass CW510L (OT57)  
with low lead content



LF Code: 1319239  
GEV Code: 527745

## PUSH-BUTTON PANEL MEMBRANE 7-BUTTONS



LF Code: 1319493  
GEV Code: LF1319493

## PUSH-BUTTON PANEL 5 BUTTONS

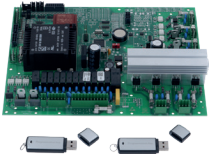


LF Code: 1320052  
GEV Code: 10075860

## PRESSURE SWITCH MBS1900 0/4 bar 4.5/5.5VDC

connection  $\varnothing$  1/4 "M  
scale 0÷4 bar

# Wega original spare parts



LF Code: 1390264  
GEV Code: 10077289

## CONTROL UNIT KIT 18090339

dimensions 255x200 mm



LF Code: 1755413  
GEV Code: 10075845

## CARTRIDGE HEATING ELEMENT 150W 120V

cartridge  $\varnothing$  6.5x50 mm



LF Code: 5048451  
GEV Code: 10073770

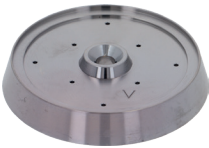
## FILTER HOLDER GASKET $\varnothing$ 73x57x8.5 mm

with internal cuts  
NBR 75 SH soft  
ORIGINAL



LF Code: 5109767  
GEV Code: 527764

## COVER FOR PUSH-BUTTON PANEL



LF Code: 5187583  
GEV Code: 10077245

## SHOWER-HOLDER DIFFUSER

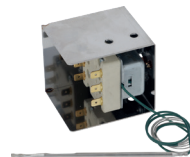
external  $\varnothing$  59 mm  
height 9.5 mm  
hole  $\varnothing$  5.5 mm



LF Code: 5188199  
GEV Code: 10077254

## DRAIN TANK $\varnothing$ 80 mm PERFORATED

fitting  $\varnothing$  3/8"  
hole  $\varnothing$  9.5 mm



LF Code: 5188566  
GEV Code: 10076763

## THERMOSTAT ASSEMBLY EGO 5532532020 169°C WEGA



LF Code: 5189823  
GEV Code: 10073805

## ANTI-SCALD TUBE GROMMET $\varnothing$ 10 mm WEGA



LF Code: 5190157  
GEV Code: 10073894

## PUSH-BUTTON SINGLE-POLE 16A 250V



LF Code: 1120611  
GEV Code: 10074125

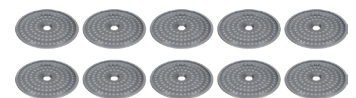
## SOLENOID VALVE LUCIFER 2-WAY 220/240V 9W WEGA

121ZS1692  
connections  $\varnothing$  1/8" FF  
max 19 bar  
FKM seal  
orifice  $\varnothing$  2.5 mm  
with coil 483510S6 XS03S6 9W  
220/240V 50/60Hz  
fluid temperature -30°C+140°C



LF Code: 5188119  
GEV Code: 10073889

## DOSING UNIT 1-4 GROUPS 230V



LF Code: 5190173  
GEV Code: 10074748

## SHOWER SCREEN $\varnothing$ 51.5 mm 10PCS WEGA

pack of 10 pieces





**REPA Deutschland GmbH**

Gadastr. 4  
85232 Bergkirchen  
info.ger@repagroup.com  
[www.gev-online.com](http://www.gev-online.com)

**REPA Italia s.r.l. a socio unico**

Via Voltri 80  
47522 Cesena FC  
info.it@repagroup.com  
[www.lfspareparts724.com](http://www.lfspareparts724.com)

**REPA France S.A.S.**

13 Rue des Forts  
59960 Neuville en Ferrain  
france@repagroup.com  
[www.epgc.com](http://www.epgc.com)

**REPA Iberia, S.L.U.**

Energía, 39-41 – PI Famadas  
08940 Cornellá (Barcelona)  
info.es@repagroup.com  
[www.gev-online.com](http://www.gev-online.com)

**REPA Nederland B.V.**

Jac. P. Thijsseweg 1H  
2408 ER Alphen aan den Rijn  
info.nl@repagroup.com  
[www.gev-online.com](http://www.gev-online.com)

**REPA Austria GmbH**

Austraße 12  
5110 Oberndorf bei Salzburg  
office@repa.at  
[www.repa.at](http://www.repa.at)

**REPA (China) Co.Ltd**

Rm 210, No.2 Bd, 3601 Dongfang Rd  
200125 Shanghai  
info.cn@repagroup.com  
[www.gev-online.com](http://www.gev-online.com)

**REPA Swiss GmbH**

Junkerbifangstrasse 18  
4800 Zofingen  
info.ch@repagroup.com  
[www.gev-online.com](http://www.gev-online.com)