

SPARE PARTS AND CONSUMABLES

For efficient maintenance



TABLE OF CONTENTS

| | | | |
|----------------------------------|-----------|----------------------------------|-----------|
| OVENS | 4 | FRYERS | 35 |
| CLEANING AND SANITIZING PRODUCTS | 5 | CLEANING AND SANITIZING PRODUCTS | 36 |
| TOOLS AND CONSUMABLES | 7 | TOOLS AND CONSUMABLES | 38 |
| ACCESSORIES | 8 | ACCESSORIES | 39 |
| EXTRAORDINARY MAINTENANCE | 9 | EXTRAORDINARY MAINTENANCE | 40 |
| REFRIGERATION | 11 | PASTA COOKERS | 42 |
| CLEANING AND SANITIZING PRODUCTS | 12 | CLEANING AND SANITIZING PRODUCTS | 43 |
| TOOLS AND CONSUMABLES | 13 | TOOLS AND CONSUMABLES | 44 |
| ACCESSORIES | 14 | ACCESSORIES | 45 |
| EXTRAORDINARY MAINTENANCE | 15 | EXTRAORDINARY MAINTENANCE | 46 |
| DISHWASHING | 17 | FOOD PROCESSING | 48 |
| CLEANING AND SANITIZING PRODUCTS | 18 | ACCESSORIES | 49 |
| TOOLS AND CONSUMABLES | 20 | BLADES FOR MEAT SLICERS | 51 |
| ACCESSORIES | 21 | SPARES | 52 |
| EXTRAORDINARY MAINTENANCE | 23 | SNACKING | 55 |
| TOP COOKERS | 28 | CLEANING AND SANITIZING PRODUCTS | 56 |
| CLEANING AND SANITIZING PRODUCTS | 29 | TOOLS AND CONSUMABLES | 58 |
| TOOLS AND CONSUMABLES | 31 | ACCESSORIES | 59 |
| ACCESSORIES | 32 | EXTRAORDINARY MAINTENANCE | 60 |
| EXTRAORDINARY MAINTENANCE | 33 | | |



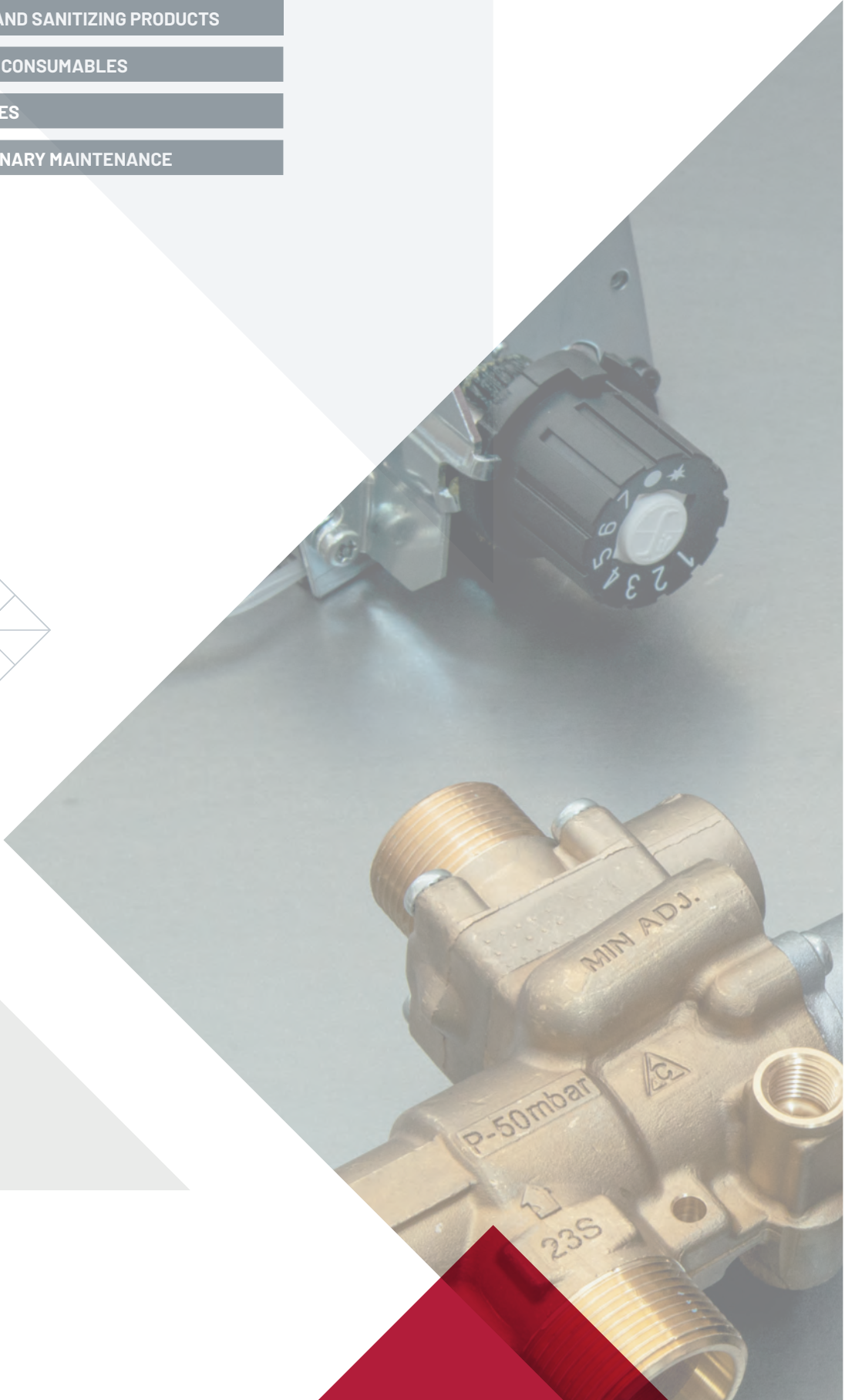
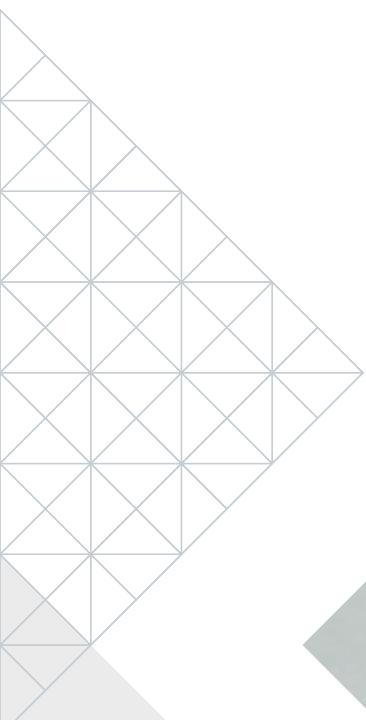
OVENS

CLEANING AND SANITIZING PRODUCTS

TOOLS AND CONSUMABLES

ACCESSORIES

EXTRAORDINARY MAINTENANCE



OVENS CLEANING AND SANITIZING PRODUCTS



LF Code: 3092039
GEV Code: 802235



LF Code: 5098361
GEV Code: 802065



LF Code: 3092187
GEV Code: LF3092187

SCALE REMOVER BOILER CLEANER 10 kg

strong-acting, complete with exhaustion indicator for the removal of limescale and corrosion residue in machines such as heat exchangers, in breakfast milk dispensers or copper cooling circuits
it contains special damping, antifoaming and corrosion-inhibiting agents.

SCALE REMOVER CALFREE 10L TANK

specially designed to remove limescale residue from steam generators

DEGREASING DETERGENT ND-150 EXTRA 5 L

food-safe
for the removal of grease, oil, wax, ink, mould and every other residue that is hard to remove, to be diluted 1:5 up to 1:50
not flammable
ideal for the cleaning of fryers after they have been emptied, for hood filters for washing station etc.



LF Code: 3092022
GEV Code: 802119



LF Code: 3092279
GEV Code: LF3092279



LF Code: 3092186
GEV Code: 890338

ALKALINE DEGREASER FORT HDSpray 750 ml

for the cleaning of FIXED parts
This product contains 90% biodegradable anionic and nonionic surface-active agents. It is an alkaline product for the removal of stubborn deposits of baked-on greases and mineral, grease from hot plates, ovens, grills and hoods

CORROSIVE LIQUID OVEN DETERGENT 12kg

for cooking chamber cleaning

DEGREASING DETERGENT ND-150 EXTRA 1 L

food-safe
for the removal of grease, oil, wax, ink, mould and every other residue that is hard to remove, to be diluted 1:5 up to 1:50
not flammable; ideal for the cleaning of fryers after they have been emptied, for hood filters, for washing station etc.



LF Code: 3092288
GEV Code: LF3092288



LF Code: 3092069
GEV Code: LF3092069



LF Code: 3092214
GEV Code: LF3092214

MULTIPURP. DETERGENT SPLENDIVETRO 750 ml

for glass cleaning
for the cleaning of any washable surface
highly anti-static and dustproof

STAINLESS STEEL CLEANER 500 ml

for cleaning of stainless steel, chrome, brass, enamelled metal surfaces, light alloys and non-ferrous metals
can be used in food environments
avoid direct contact with food

DETERGENT STAINLESS STEEL SPRAY 500 ml

to restore stainless steel surfaces
protects and polishes surfaces

OVENS CLEANING AND SANITIZING PRODUCTS



LF Code: 3092267
GEV Code: 890023

DETERGENT FOR STAINL. STEEL WÜRTH 400ml



LF Code: 3092226
GEV Code: LF3092226

LIQUID DISINFECTANT DETERGENT 5 L

100% biodegradable
Recommended for floors, walls, working surfaces, evaporators, etc.
Removes all organic residue (even if encrusted)
Ensures perfect surface hygienisation
Non-aggressive for the user
Prevents pipe clogging thanks to the continuous enzymatic action
Dosage: 1% in hot water



LF Code: 3092330
GEV Code: LF3092330

DETERGENT DISINFECTANT 750 ml

for cleaning, degreasing, polishing and sanitizing all equipment, tops and surfaces. It is specific to clean and sanitize hospitals, retirement homes, schools and gyms, besides industrial, food and catering sector



LF Code: 3394361
GEV Code: 890206

CONTACTS CLEANER SPRAY KD/E/2S 200 ml

specific product to degrease and clean all the electric contacts, suit. for UHF and VHF groups, electronic components, micro-mechanisms of high precision, it does not corrode nor leaves residues, it does not oxidise treated parts.

OVENS TOOLS AND CONSUMABLES



LF Code: 3394551
GEV Code: LF3394551

TOTAL HARDNESS ANALYSIS TEST KIT



LF Code: 3180102
GEV Code: 890101

SILICONE GREASE 150 g

to lubricate taps, valves, pumps
to grease bearings and threadings
hot and cold water resistant
water-repellent



LF Code: 3180052
GEV Code: 890015

RED HIGH TEMPERATURE SEALER 280 ml

operating temperature -65+260°C with
peaks 320°C
for OVEN GASKETS



LF Code: 1180001
GEV Code: LF1180001

GREASE KLUBERSYNTH UH1 14-151 45 g

food safe grease for lubrication
of all friction points
ideal for water and steam taps
operating temperature -45°/+120°
beige color - NSF H1 certified
hot and cold water resistant
high anti-corrosion power
can replace vaseline



LF Code: 3092177
GEV Code: LF3092177

GREASE MOLYKOTE1102 50 g

for gas valves and taps
max operating temperature +175°C

OVENS ACCESSORIES



LF Code: 3010241
GEV Code: LF3010241



LF Code: 3010242
GEV Code: LF3010242



LF Code: 3010243
GEV Code: LF3010243

WATER SOFTENER "ECO 8" 8 L ø 3/4"

for water treatment for TECHNICAL purposes
AUTOTROL digital head 366/604
timer 604 6W 230V 50/60Hz
connection 3/4"
dimensions: width 225 mm,
height 415 mm
depth 375 mm
resin content 5.4 kg
regeneration salt(NaCl-table salt)0.5 kg
brine salt 10 kg
operating temperature 2°÷35°C
pressure: min 2 bar - max 8 bar

WATER SOFTENER "ECO 12" 12 L ø 3/4"

for water treatment for TECHNICAL purposes
AUTOTROL digital head 366/604
timer 604 6W 230V 50/60Hz
connection 3/4"
dimensions: width 260 mm,
height 440 mm
depth 450 mm
resin content 5.6 kg
regeneration salt(NaCl-table salt)1 kg
brine salt 20 kg
operating temperature 2°÷35°C
pressure: min 2 bar - max 8 bar

WATER SOFTENER "ELETTRONIC 8" 8 L ø 3/4"

for water treatment for TECHNICAL purposes
AUTOTROL digital head 255
timer LOGIX 740 4W 230V 50/60Hz
complete with mixer ø 3/4"
connection 3/4"
dimensions: width 200 mm, height 540 mm
depth 410 mm
resin content 5.6 kg
regeneration salt(NaCl-table salt)1 kg
brine salt 20 kg
operating temperature 2°÷35°C
pressure: min 2 bar - max 8 bar



LF Code: 3010267
GEV Code: 520136



LF Code: 3010300
GEV Code: 530238

RESIN 25 L

25 L package

SALT FOR WATER SOFTNER IN TABLETS 25 kg

FOR WATER SOFTENING SYSTEMS



LF Code: 3185052
GEV Code: 971186



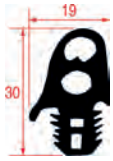
LF Code: 3185053
GEV Code: 970123

STAINLESS STEEL GRID GN 1/1 530x325 mm

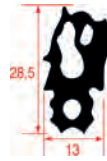
thickness 7 mm

STAINLESS STEEL GRID GN 2/1 650x530 mm

OVENS EXTRAORDINARY MAINTENANCE



LF Code: 7115455
GEV Code: 900750



LF Code: 5006659
GEV Code: 902221



LF Code: 5012477
GEV Code: 902337

GASKET FOR OVEN DOOR GREY/BLUE

of silicone elastomer
profile dimensions 30x19 mm
GREY COLOUR/BLUE
SALE PER LINEAR METRE

GASKET FOR OVEN DOOR 500x470 mm

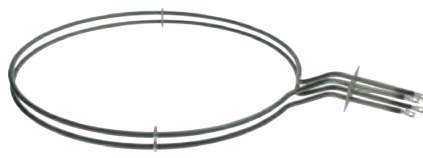
made of silicone elastomer
profile dimensions 28,5x13 mm
COLOUR BLACK

GASKET FOR OVEN DOOR 755x470 mm

made of silicone elastomer
profile dimensions 28,5x13 mm
BLACK COLOUR



LF Code: 3755206
GEV Code: 418196



LF Code: 3755239
GEV Code: 415654



LF Code: 3755240
GEV Code: 415690

HEATING ELEMENT 6000W 230V

external \varnothing 230 mm - internal \varnothing 218 mm
total height 130 mm
flange 140x25 mm

HEATING ELEMENT 5666W 230V

external \varnothing 480 mm - internal \varnothing 465 mm
total height 65 mm
flange 80x45 mm

HEATING ELEMENT 9000W 230V

immersed depth 290 mm
flange external \varnothing 63 mm
with bulb sheath - complete with O-ring



LF Code: 7113555
GEV Code: 370744



LF Code: 3120283
GEV Code: 374032



LF Code: 3120550
GEV Code: 370267

ELECTRO VALVE RPE 220/240V \varnothing 11 mm

solenoid valve 180°
220/240V 50/60Hz - max 90°C
inlet 3/4" - outlet \varnothing 11 mm

SOLENOID VALVE RPE 230V \varnothing 10 mm

solenoid valve 180° - 230V 50/60Hz
max 60°C inlet 3/4" - two outlets \varnothing 10 mm
1 outlet with adjusters - brown
1 outlet with adjusters - red

SOLENOID VALVE ROBERTSHAW 1 WAY 180°

240V 50/60Hz 6W
max. temperature 90°C
inlet 3/4" - outlet \varnothing 10.5 mm



LF Code: 3120404
GEV Code: 370015

SOLENOID VALVE T&P 1 WAY 90°

230V 50/60Hz
max. temperature 90°C
inlet 3/4" con riduttore di portata 10 L/min
outlet \varnothing 10.5 mm

SEE COMPLETE LISTING ON WEBSITE
WWW.GEV-ONLINE.COM
WWW.LFSPAREPARTS724.COM

OVENS EXTRAORDINARY MAINTENANCE



LF Code: 3221382
GEV Code: 359946

NEUTRAL HALOGEN LAMP G9 40W 230V

max. temperature 250°C



LF Code: 3221105
GEV Code: 357193

NEUTRAL HALOGEN LAMP G4 20W 12V

max temperature 250°C



LF Code: 3221061
GEV Code: 360663

LAMP E14 25W 230V

max temperature 300°C - ø 26x57 mm



LF Code: 3122406
GEV Code: 500573

DRAIN PUMP HANNING DPS25-032

30W 220/240V 50Hz - supplied with 2 extra pump bodies and RAST5 adjuster
inlet outer ø 23÷28 mm
outlet outer ø 23 mm



LF Code: 3331003
GEV Code: 499142

VIBRATORY PUMP CP.06

70W 220/230V 60Hz
connections ø 7.5 mm - ø 8 mm



LF Code: 3331006
GEV Code: 500568

SET VIBRATORY PUMP 32W 220/240V

50/60Hz - fittings ø 1/8" - ø 7 mm
PUMP CEME E51210EN02240C3

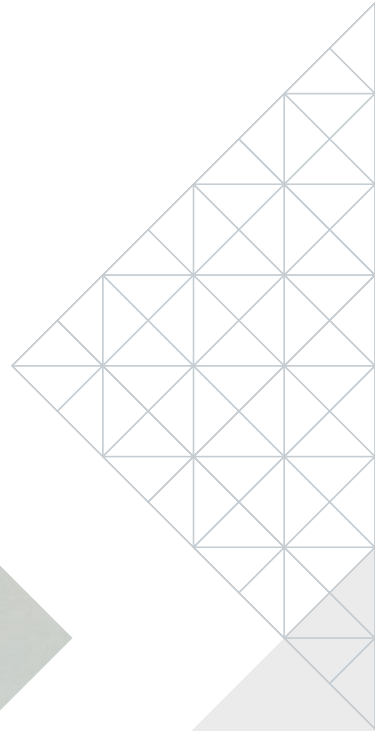
REFRIGERATION

CLEANING AND SANITIZING PRODUCTS

TOOLS AND CONSUMABLES

ACCESSORIES

EXTRAORDINARY MAINTENANCE



REFRIGERATION CLEANING AND SANITIZING PRODUCTS



LF Code: 3092354
GEV Code: LF3092354

SANIBACT DISINFECTANT CONCENTRATED 1 L

bactericidal and yeasticidal disinfectant
concentrated - dilution 1:25
complies with EN1276 - EN13697 tests
(bacteria)
complies with EN13697 test (moulds)
effective against viruses in the
CORONAVIRUS - family and hepatitis B/C
for use on evaporators and all surfaces



LF Code: 3092256
GEV Code: 801490

DETERGENT GASKET CARE 1 L

cleans and sanitizes refrigerator
internal parts and gaskets



LF Code: 3092247
GEV Code: 801490

DETERGENT GASKET CLEAN 500 ml

cleans and sanitizes refrigerator
internal parts and gaskets



LF Code: 3092016
GEV Code: LF3092016

DETERGENT DS-3 PERGEL 1 kg

for ice makers
non-corrosive to metals
eliminates limescale
it does not release irritating gas or vapours
it contains phosphoric acid and lactic acid
corrosive



LF Code: 5061727
GEV Code: LF5061727

DETERGENT URNEX FREEZ 414 ml

suitable for ice makers
non-corrosive to metals
it restores the machine's efficiency
by removing any limescale buildup
it contains irritating citric acid - irritant



LF Code: 3092288
GEV Code: LF3092288

MULTIPURP. DETERGENT SPLENDIVETRO 750 ml

for glass cleaning
for the cleaning of any washable surface
highly anti-static and dustproof



LF Code: 3092290
GEV Code: LF3092290

DISINFECTANT DETERGENT SANITRE 1 L

amphoteric sanitizer for food surfaces
for the cleaning and sanitizing of floors,
worktops and food equipment
Reg. N°19277 of the Italian Ministry of
Health



LF Code: 3092069
GEV Code: LF3092069

STAINLESS STEEL CLEANER 500 ml

for cleaning of stainless steel, chrome,
brass, enamelled metal surfaces,
light alloys and non-ferrous metals
can be used in food environments
avoid direct contact with food



LF Code: 3394361
GEV Code: 890206

CONTACTS CLEANER SPRAY KD/E/2S 200 ml

specific product to degrease and clean all
the electric contacts, suit. for UHF and VHF
groups, electronic components, micro-
mechanisms of high precision, it does not
corrode nor leaves residues, it does not
oxidise treated parts.



LF Code: 3092064
GEV Code: 890337

**MAGIC SPONGE 100x60x25 mm -
30 PIECES**

for all hard surfaces, such as steel and
marble
antibacterial action reduces bacteria by
99.99%
30 pcs PACKAGE
please see the attached documentation for use



LF Code: 3180043
GEV Code: 890217

**OIL FOOD-GRADE SPRAY WÜRTH
300 ml**

colourless and odourless powerful
lubricant - to be used in the food and
beverage sector, non-toxic, harmless to
skin and protects from corrosion,
waterproof.
compatible w/aluminium, stainless steel,
plastic - operating temperature -10+180°C
NSF certified

REFRIGERATION ACCESSORIES



LF Code: 3010241
GEV Code: LF3010241



LF Code: 3010242
GEV Code: LF3010242



LF Code: 3010243
GEV Code: LF3010243

WATER SOFTENER "ECO 8" 8 L ø 3/4"

for water treatment for TECHNICAL purposes
AUTOTROL digital head 366/604
timer 604 6W 230V 50/60Hz
connection 3/4"
dimensions: width 225 mm, height 415 mm
depth 375 mm
resin content 5.4 kg
regeneration salt(NaCl-table salt)0.5 kg
brine salt 10 kg
operating temperature 2°÷35°C
pressure: min 2 bar - max 8 bar

WATER SOFTENER "ECO 12" 12 L ø 3/4"

for water treatment for TECHNICAL purposes
AUTOTROL digital head 366/604
timer 604 6W 230V 50/60Hz
connection 3/4"
dimensions: width 260 mm, height 440 mm
depth 450 mm
resin content 5.6 kg
regeneration salt(NaCl-table salt)1 kg
brine salt 20 kg
operating temperature 2°÷35°C
pressure: min 2 bar - max 8 bar

WATER SOFTENER "ELETTRONIC 8" 8 L ø 3/4"

for water treatment for TECHNICAL purposes
AUTOTROL digital head 255
timer LOGIX 740 4W 230V 50/60Hz
complete with mixer ø 3/4"
connection 3/4"
dimensions: width 200 mm, height 540 mm
depth 410 mm
resin content 5.6 kg
regeneration salt(NaCl-table salt)1 kg
brine salt 20 kg
operating temperature 2°÷35°C
pressure: min 2 bar - max 8 bar



LF Code: 3010267
GEV Code: 520136



LF Code: 3010300
GEV Code: 530238



LF Code: 3185052
GEV Code: 971186

RESIN 25 L

25 L package

SALT FOR WATER SOFTNER IN TABLETS 25 kg

FOR WATER SOFTENING SYSTEMS

STAINLESS STEEL GRID GN 1/1 530x325 mm

thickness 7 mm



LF Code: 3185053
GEV Code: 970123



LF Code: 3185184
GEV Code: 970125



LF Code: 3185050
GEV Code: 970556

STAINLESS STEEL GRID GN 2/1 650x530 mm

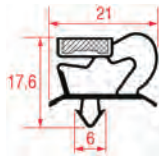
GRID PLASTIC-COATED GN 1/1 530x325 mm

white colour

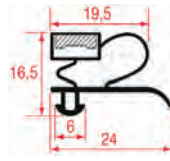
GRID PLASTIC-COATED GN 2/1 650x530 mm

white colour

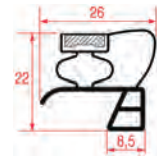
REFRIGERATION EXTRAORDINARY MAINTENANCE



LF Code: 2110446
GEV Code: LF2110446



LF Code: 3186876
GEV Code: 902167



LF Code: 3186955
GEV Code: 900025

SNAP-IN GASKET 595x405 mm

SNAP-IN GASKET 1003 LENGTH 2000 mm

SNAP IN GASKET 400x300 mm

for REFRIGERATED TABLES



LF Code: 3355698
GEV Code: 420372



LF Code: 3455430
GEV Code: LF3455430



LF Code: 3355688
GEV Code: 418856

HEATING ELEMENT FOR DOOR 3000 mm

54W 230V - silicone insulation \varnothing 3 mm
electric cable length 1000 mm

HEATING ELEMENT RCE 051 250W 230V

345x50x115 mm

HEATING ELEMENT FOR TRAY 200W 220V

thermostat 130°C
210x117 mm



LF Code: 3240910
GEV Code: 601020



LF Code: 3240911
GEV Code: 601022



LF Code: 3240912
GEV Code: 601023

MOTOR WEIGUANG YZF 5-13 5 FAST. METHODS

230V 50/60Hz 5W 1300rpm

MOTOR WEIGUANG YZF 10-20 5 FAST. METHODS

230V 50/60Hz 10W 1300rpm

MOTOR WEIGUANG YZF 16-25 5 FAST. METHODS

230V 50/60Hz 16W 1300rpm



LF Code: 3240913
GEV Code: 601024

MOTOR WEIGUANG YZF 25-40 5 FAST. METHODS

230V 50/60Hz 25W 1300rpm

SEE COMPLETE LISTING ON WEBSITE
WWW.GEV-ONLINE.COM
WWW.LFSPAREPARTS724.COM

REFRIGERATION EXTRAORDINARY MAINTENANCE



LF Code: 3120404
GEV Code: 370015



LF Code: 3120405
GEV Code: 370017



LF Code: 3120406
GEV Code: 370019

SOLENOID VALVE T&P 1 WAY 90°

230V 50/60Hz - max. temperature 90°C
inlet 3/4" con riduttore di portata 10 L/min
outlet ø 10.5 mm

SOLEN. VALVE T&P 1 WAY 180°

230V 50/60Hz - max. temperature 90°C
inlet 3/4" - outlet ø 10.5 mm

SOLEN. VALVE T&P 2 WAY 90°

230V 50/60Hz - max. temperature 90°C
inlet 3/4" - two outlets ø 10.5 mm



LF Code: 3120407
GEV Code: 370021



LF Code: 1240283
GEV Code: 345042



LF Code: 3240123
GEV Code: 527736

SOLEN. VALVE T&P 2 WAY 180°

230V 50/60Hz - max. temperature 90°C
inlet 3/4" - two outlets ø 10.5 mm

MICROSWITCH CROUZET EF83161.3

1NO+1NC 16A 250V - faston 6.3x0.8 mm
standard
operating force max 0.8N - min 0.2N

MICROSWITCH ROLD VRSRB1DA1

16A 250V



LF Code: 5026552
GEV Code: 359728



LF Code: 3221041
GEV Code: 359740



LF Code: 3221061
GEV Code: 360663

HALOGEN LAMP OSRAM E14 40W 230V

dimensions 80x26 mm
max temperature 300°C

LAMP E14 15W 230V

max temperature 300°C - dimensions ø
22x50 mm

LAMP E14 25W 230V

max temperature 300°C - ø 26x57 mm

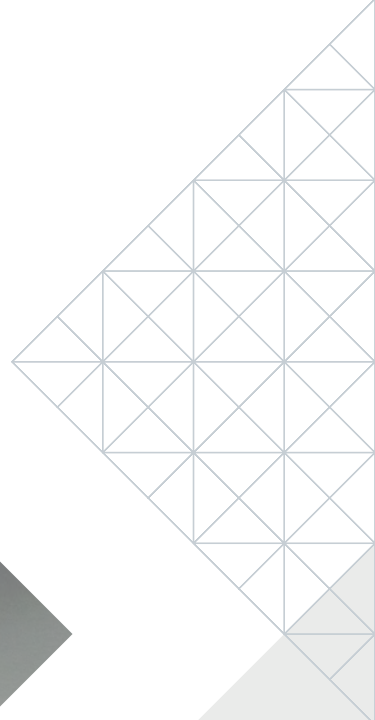
DISHWASHING

CLEANING AND SANITIZING PRODUCTS

TOOLS AND CONSUMABLES

ACCESSORIES

EXTRAORDINARY MAINTENANCE



DISHWASHING CLEANING AND SANITIZING PRODUCTS



LF Code: 3092039
GEV Code: 802235

SCALE REMOVER BOILER CLEANER 10 kg

strong-acting, complete with exhaustion indicator
for the removal of limescale and corrosion residue in machines such as heat exchangers, in breakfast milk dispensers or copper cooling circuits
it contains special damping, antifoaming and corrosion-inhibiting agents.



LF Code: 3092095
GEV Code: LF3092095

SCALE REMOVER ASCOR PRN 6kg

for boilers - elements - refrigerating circuits



LF Code: 3092066
GEV Code: 802118

SCALE REMOVER CALCINET 1 kg

removes scale residues from DISHWASHERS, HEAT EXCHANGERS and scaly elements
it does not damage rubber gaskets



LF Code: 3092069
GEV Code: LF3092069

STAINLESS STEEL CLEANER 500 ml

for cleaning of stainless steel, chrome, brass, enamelled metal surfaces, light alloys and non-ferrous metals
can be used in food environments
avoid direct contact with food



LF Code: 3092214
GEV Code: LF3092214

DETERGENT STAINLESS STEEL SPRAY 500 ml

to restore stainless steel surfaces
protects and polishes surfaces



LF Code: 3092267
GEV Code: 890023

DETERGENT FOR STAINL. STEEL WÜRTH 400ml



LF Code: 3092226
GEV Code: LF3092226

LIQUID DISINFECTANT DETERGENT 5 L

100% biodegradable
Recommended for floors, walls, working surfaces, evaporators, etc.
Removes all organic residue (even if encrusted)
Ensures perfect surface hygienisation
Non-aggressive for the user
Prevents pipe clogging thanks to the continuous enzymatic action
Dosage: 1% in hot water



LF Code: 3092290
GEV Code: LF3092290

DISINFECTANT DETERGENT SANITRE 1 L

amphoteric sanitizer for food surfaces
for the cleaning and sanitizing of floors, worktops and food equipment
Reg. N°19277 of the Italian Ministry of Health



LF Code: 3092330
GEV Code: LF3092330

DETERGENT DISINFECTANT 750 ml

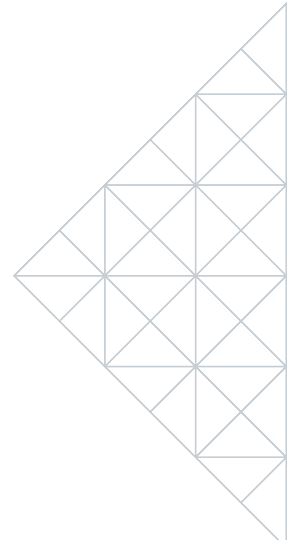
for cleaning, degreasing, polishing and sanitizing
all equipment, tops and surfaces.
It is specific to clean and sanitize hospitals, retirement homes, schools and gyms, besides industrial, food and catering sector



LF Code: 3394361
GEV Code: 890206

CONTACTS CLEANER SPRAY KD/E/2S 200 ml

specific product to degrease and clean all the electric contacts, suit. for UHF and VHF groups, electronic components, micro-mechanisms of high precision, it does not corrode nor leaves residues, it does not oxidise treated parts.



DISHWASHING TOOLS AND CONSUMABLES



LF Code: 3392004
GEV Code: 890106

SILICONE TRANSPARENT SEALANT TB40

90g tube
temperature range -40°C to +160°C



LF Code: 3392006
GEV Code: LF3392006

TRANSPARENT SILICONE LOCTITE 310 ml

suitable for gluing and sealing
in the industry(glass gluing-oven sealing)
operating temperature -60+250°C



LF Code: 3180102
GEV Code: 890101

SILICONE GREASE 150 g

to lubricate taps, valves, pumps, to grease
bearings and threadings - hot and cold
water resistant, water-repellent



LF Code: 3092020
GEV Code: LF3092020

RINSE AID BRILLER LP 5L DRUM

it helps fast drying and makes
plates and glasses even shinier
It contains 80% biodegradable nonionic
detergents
please see the attached documentation for use



LF Code: 3092272
GEV Code: LF3092272

RINSE AID SHINE CLEAN 5 kg

Automatic dosage 0.1%-1%
Rinse aid that helps dish drying
of dishes. Professional use
please see the attached documentation for use



LF Code: 3092273
GEV Code: LF3092273

RINSE AID SHINE CLEAN 10 kg

Automatic dosage 0.1%-1%
Rinse aid that helps dish drying
of dishes. Professional use
please see the attached documentation for use



LF Code: 3092270
GEV Code: LF3092270

DETERGENT CLEAR CLEAN 6 kg

Professional use, specific for dishwashers
glass washers with strong descaling action
Rinse after use
please see the attached documentation for use



LF Code: 3092271
GEV Code: LF3092271

DETERGENT CLEAR CLEAN 12 kg

Professional use, specific for dishwashers
glass washers with strong descaling action
Rinse after use
please see the attached documentation for use



LF Code: 3092274
GEV Code: LF3092274

DETERGENT CLEAR CLEAN PLUS 6 kg

Containing Chlorine, specific for dishwash-
ers, glass washers
Strong rinse aid and descaling action
Professional use rinse after use
please see the attached documentation for use



LF Code: 3092275
GEV Code: LF3092275

DETERGENT CLEAR CLEAN PLUS 12 kg

Containing Chlorine, specific for dishwash-
ers, glass washers
Strong rinse aid and descaling action
Professional use rinse after use
please see the attached documentation for use



LF Code: 3394551
GEV Code: LF3394551

TOTAL HARDNESS ANALYSIS TEST KIT

DISHWASHING ACCESSORIES



LF Code: 3055454
GEV Code: 972100

GLASS RACK 500x500x106 mm



LF Code: 3055451
GEV Code: 972102

PLATE RACK 500x500x106 mm

18 PLATES - 12 BOWLS
plastic



LF Code: 3055453
GEV Code: 972104

TRAYS BASKET 500x500x106 mm



LF Code: 3055557
GEV Code: 972102

DISH RACK 500x500x100 mm

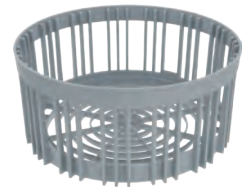
plastic



LF Code: 5110619
GEV Code: 972100

BASKET MISC. ITEMS CAMBRO 500x500x101 mm

plastic - large-size mesh bottom
height 83 mm



LF Code: 3055482
GEV Code: 970828

GLASS RACK \varnothing 355x160 mm

bottom ring \varnothing 280 mm



LF Code: 3055491
GEV Code: 972035

CUTLERY RACK 450x230x130 mm

of plastic

SEE COMPLETE LISTING ON WEBSITE
WWW.GEV-ONLINE.COM
WWW.LFSPAREPARTS724.COM

DISHWASHING ACCESSORIES



LF Code: 3010241
GEV Code: LF3010241



LF Code: 3010242
GEV Code: LF3010242



LF Code: 3010243
GEV Code: LF3010243

WATER SOFTENER "ECO 8" 8 L ø 3/4"

for water treatment for TECHNICAL purposes
AUTOTROL digital head 366/604
timer 604 6W 230V 50/60Hz
connection 3/4"
dimensions: width 225 mm,
height 415 mm
depth 375 mm
resin content 5.4 kg
regeneration salt(NaCl-table salt)0.5 kg
brine salt 10 kg
operating temperature 2°÷35°C
pressure: min 2 bar - max 8 bar

WATER SOFTENER "ECO 12" 12 L ø 3/4"

for water treatment for TECHNICAL purposes
AUTOTROL digital head 366/604
timer 604 6W 230V 50/60Hz
connection 3/4"
dimensions: width 260 mm,
height 440 mm
depth 450 mm
resin content 5.6 kg
regeneration salt(NaCl-table salt)1 kg
brine salt 20 kg
operating temperature 2°÷35°C
pressure: min 2 bar - max 8 bar

WATER SOFTENER "ELETTRONIC 8" 8 L ø 3/4"

for water treatment for TECHNICAL purposes
AUTOTROL digital head 255
timer LOGIX 740 4W 230V 50/60Hz
complete with mixer ø 3/4"
connection 3/4"
dimensions: width 200 mm, height 540 mm
depth 410 mm
resin content 5.6 kg
regeneration salt(NaCl-table salt)1 kg
brine salt 20 kg
operating temperature 2°÷35°C
pressure: min 2 bar - max 8 bar



LF Code: 3010267
GEV Code: 520136



LF Code: 3010300
GEV Code: 530238

RESIN 25 L

25 L package

SALT FOR WATER SOFTNER IN TABLETS 25 kg

FOR WATER SOFTENING SYSTEMS

DISHWASHING EXTRAORDINARY MAINTENANCE



LF Code: 7123303
GEV Code: 512546

AIR TRAP 175x65 mm

hose end fitting \varnothing 6 mm



LF Code: 3060035
GEV Code: 511446

AIR CHAMBER 200x260 mm

closed window



LF Code: 3060034
GEV Code: 511445

AIR CHAMBER FOR BOILER 60x230 mm

hose end fitting \varnothing 6 mm



LF Code: 3060068
GEV Code: 517171

AIR CHAMBER 55x31x90 mm

hose end fitting \varnothing 6 mm



LF Code: 3060601
GEV Code: 510103

AIR CHAMBER COMPLETE 85x20x80 mm

with two O-ring gaskets, bajo bolt and
hose end fitting \varnothing 5 mm



LF Code: 3060609
GEV Code: 518200

AIR CHAMBER COMPLETE \varnothing 34x79 mm

complete with flat O-ring gasket and
connector - hose end fitting \varnothing 6 mm



LF Code: 3060129
GEV Code: 502062

AIR CHAMBER COMPLETE \varnothing 26x105 mm

hose end fitting \varnothing 6 mm
complete with mounting kit



LF Code: 3320039
GEV Code: 541045

PRESSURE SWITCH 1 LEVEL

calibration 28/12 mbar
250V 16(4)A



LF Code: 3320096
GEV Code: 541142

PRESSURE SWITCH 1 LEVEL

calibration 123/75 mbar
250V 16(4)A



LF Code: 3320019
GEV Code: 541003

PRESSURE SWITCH 1 LEVEL

calibration 55/35 mbar - 250V 16A
max operating temperature 85°C



LF Code: 3320029
GEV Code: 541017

PRESSURE SWITCH 1 LEVEL

calibration 40/20 mbar -250V 16A
max operating temperature 85°C

SEE COMPLETE LISTING ON WEBSITE
WWW.GEV-ONLINE.COM
WWW.LFSPAREPARTS724.COM

DISHWASHING EXTRAORDINARY MAINTENANCE



LF Code: 3355461
GEV Code: 418823

HEATING ELEMENT FINNED 1000W 220V

for drying area - immersed depth 430 mm
wings 25x50 mm - fittings M14x1.5
length of finned part 335 mm



LF Code: 3455410
GEV Code: 420331

HEATING ELEMENT 1400W 230V

immersed length 190 mm
width 160 mm - flange 50x27 mm
complete with gasket



LF Code: 5061400
GEV Code: 417575

HEATING ELEMENT 2100W 230V

immersed length 270 mm
width 160 mm - flange 50x27 mm
complete with gasket



LF Code: 3855010
GEV Code: 420347

HEATING ELEMENT CARTRIDGE 2500W 255V

immersed length 210 mm
external \varnothing flange 49 mm
heating element \varnothing 20 mm - cables 300 mm
complete with O-ring



LF Code: 3355119
GEV Code: 415004

HEATING ELEMENT 3000W 220/380V

for boiler and tank
immersed length 295 mm
fitting for fastening \varnothing 1 1/2 (48 mm)
complete with gasket \varnothing 63 mm



LF Code: 3355292
GEV Code: 415066

HEATING ELEMENT 4500W 220/380V

immersed length 300 mm
flange \varnothing external 63 mm - with probe receptacle
complete with O-ring \varnothing 58 mm



LF Code: 3755950
GEV Code: 416058

HEATING ELEMENT BOILER 6000W 400V

immersed length 260 mm
external \varnothing flange 60 mm - with cables
complete with O-ring \varnothing 57 mm



LF Code: 3756008
GEV Code: 416289

HEATING ELEMENT 6000W 230V

immersed length 415 mm
width 65 mm - flange 80x27 mm



LF Code: 5020241
GEV Code: 418770

HEATING ELEMENT 15000W 240V

immersed length 595 mm
external \varnothing flange 72 mm
complete with O-ring \varnothing 67 mm

DISHWASHING EXTRAORDINARY MAINTENANCE



LF Code: 3122310
GEV Code: 500114

ELECTRIC PUMP AP 5800/2013 1HP

inlet external \varnothing 45 mm
outlet external \varnothing 40 mm
1HP 230V 50Hz 4A - Rpm 2850
capacitor 16 μ F - flow rate 340 L/min



LF Code: 3122500
GEV Code: 500298

ELECTRIC PUMP AP 902SX 0.10HP

inlet external \varnothing 28 mm
outlet external \varnothing 28 mm
0.10HP 230V 50Hz 1.1A - Rpm 2600
capacitor 6.3 μ F - flow rate 80 L/min



LF Code: 3122185
GEV Code: LF3122185

ELECTRIC PUMP FIR 1204DX 2HP

inlet external \varnothing 63 mm
outlet external \varnothing 54 mm
1.5kW 220/415V 50Hz 5.9/3.4A - Rpm 2800
flow rate 500 L/min



LF Code: 3122052
GEV Code: 500037

ELECTRIC PUMP FIR 2211DX 0.10HP

inlet external \varnothing 28 mm
outlet external \varnothing 28 mm
0.074kW 230V 50Hz 1.1A - 2700Rpm
capacitor 5 μ F - flow rate 80 L/min



LF Code: 5007992
GEV Code: 500359

ELECTRIC PUMP LGB PPL46DX 0.43HP

hose-end fitting inlet-outlet \varnothing 12 mm
0.32kW 230V 50Hz capacitor 8 μ F



LF Code: 3122454
GEV Code: 500538

ELECTRIC PUMP LGB PS46RH 0.60HP

inlet \varnothing 3/8" F - outlet \varnothing 3/8" F
0.45kW 230V 50Hz 2.5A - Rpm 2800
capacitor 10 μ F - for pressure increase
with 2 hose-end fittings \varnothing 3/8" x 12mm



LF Code: 3122574
GEV Code: 500280

DRAIN PUMP 100W 230V 50Hz

WITH SEAL ON SHAFT TYPE 6x22x7 in NBR
inlet external \varnothing 24 mm
outlet external \varnothing 24 mm - Asincrona



LF Code: 3122871
GEV Code: LF3122871

DRAIN PUMP 100W 230V 50Hz

with motor overload cutout



LF Code: 3122001
GEV Code: 500039

ELECTRIC PUMP GRE 1001X

190W 230V 50Hz
inlet external \varnothing 24 mm
outlet external \varnothing 24 mm



LF Code: 3122406
GEV Code: 500573

DRAIN PUMP HANNING DPS25-032

30W 220/240V 50Hz
supplied with 2 extra
pump bodies and RAST5 adjuster
inlet outer \varnothing 23÷28 mm - outlet outer \varnothing 23 mm

SEE COMPLETE LISTING ON WEBSITE
WWW.GEV-ONLINE.COM
WWW.LFSPAREPARTS724.COM

DISHWASHING EXTRAORDINARY MAINTENANCE



LF Code: 3090016
GEV Code: 361015

HYDRAULIC DISPENSER TYPE 3000

for rinse aid - flow rate max 3.6 cc
with inspectionable filter - silicone valves
neoprene/nylon diaphragm



LF Code: 3090001
GEV Code: 361002

HYDRAULIC RINSE AID INJECTOR

for rinse aid



LF Code: 3090228
GEV Code: 361545

RINSE AID DISPENSER 2001P

max flowrate 6.6 cc



LF Code: 3090019
GEV Code: 361009

RINSE AID DISPENSER N6 E 05 G4G4

with EPDM diaphragm
minimum pressure 0.5 bar
inlet side 4 mm hose fitting
outlet side 4 mm hose fitting



LF Code: 3090130
GEV Code: 361370

RINSE AID HYDRAULIC DISPENSER

setting from 0 to 3 cm³/cycle



LF Code: 3090236
GEV Code: 361596

DETERGENT DISPENSER 115/240V 50/60Hz



LF Code: 3090307
GEV Code: 361442

PERISTALTIC PUMP TWINDOSE 10

24/115/230V 50/60Hz
size 190x155 mm
compact injection system. It allows
pump speed setting
max. detergent flow rate 4 L/h 0.1 bar
max rinse aid flow rate 1 L/h 3 bar
complete with mounting kit



LF Code: 3067602
GEV Code: 510032

SALT CONTAINER ASSEMBLY 85x100 mm

new model



LF Code: 3067001
GEV Code: 510929

SALT CONTAINER COMPLETE

overall height 150 mm - external ø 122 mm

DISHWASHING EXTRAORDINARY MAINTENANCE



LF Code: 3120004
GEV Code: 370734



LF Code: 3120104
GEV Code: LF3120104



LF Code: 3120005
GEV Code: 373017

SOLENOID VALVE ELBI TYPE 319 1 WAY 90°

220/240V 50/60Hz - max. temperatur. 90°C
inlet 3/4" - outlet ø 10.5 mm

SOLENOID VALVE ELBI TYPE 319 1 WAY 90°

220/240V 50/60Hz - max. temperatur. 90°C
inlet 3/4" - outlet ø 13.5 mm

SOLENOID VALVE ELBI TYPE 329 1 WAY 180°

220/240V 50/60Hz - max. temperatur. 90°C
inlet 3/4" - outlet ø 10.5 mm



LF Code: 3120006
GEV Code: 373019



LF Code: 3120405
GEV Code: 370017



LF Code: 3120557
GEV Code: 370329

SOLENOID VALVE ELBI TYPE 339 2 WAY 90°

220/240V 50/60Hz - max. temperatur. 90°C
inlet 3/4" - two outlets ø 10.5 mm

SOLENOID VALVE T&P 1 WAY 180°

230V 50/60Hz - max. temperatur. 90°C
inlet 3/4" - outlet ø 10.5 mm

SOLENOID VALVE L182B01 1/2"FF 24V

EX L180 - for water - DN 13.5 mm - NC
max temperature 100°C
max differential pressure 16 bar
coil 24V 50/60Hz



LF Code: 3120541
GEV Code: 370320



LF Code: 7114673
GEV Code: 519663

SOLENOID VALVE L140B5 ø 1/2"FF 24V

for water - normally closed
max. temperature 100°C
max. differential pressure 10 bar
coil 24V 50/60Hz

DOOR GASKET 3SIDES 550x600x650 mm

profile 11x19 mm
for hood-type dishwasher PT-M

SEE COMPLETE LISTING ON WEBSITE
WWW.GEV-ONLINE.COM
WWW.LFSPAREPARTS724.COM

TOP COOKERS

CLEANING AND SANITIZING PRODUCTS

TOOLS AND CONSUMABLES

ACCESSORIES

EXTRAORDINARY MAINTENANCE



TOP COOKERS CLEANING AND SANITIZING PRODUCTS



LF Code: 3092235
GEV Code: LF3092235

PULICERAM SANITIZER SMEG 500 ml

suitable for glass-ceramic cooking hob
for operating instructions see the label
on the package - complete with sprayer



LF Code: 5103265
GEV Code: 802253

DEGREASER GLANCIL "EASY&SAFE" 750 ml

for all surfaces of professional kitchens
contains non-ionic surfactants, contains
perfume, dissolves proteins, starch and oil
eliminates grease from all surfaces and
objects, Washable and alkali-resistant
particularly suitable for floor cleaning
and extractor hoods



LF Code: 3092347
GEV Code: 802212

DETERGENT RAPID GREASE 1 l

degreasing detergent for grids and plates
hot use
for use instructions, see attached docu-
mentation



LF Code: 3092022
GEV Code: 802119

ALKALINE DEGREASER FORT HDSpray 750 ml

for the cleaning of FIXED parts
This product contains 90% biodegradable
anionic and nonionic surface-active agents.
It is an alkaline product for the removal of
stubborn deposits of baked-on greases
and mineral, grease from hot plates, ovens,
grills and hoods



LF Code: 3092069
GEV Code: LF3092069

STAINLESS STEEL CLEANER 500 ml

for cleaning of stainless steel, chrome,
brass, enamelled metal surfaces,
light alloys and non-ferrous metals
can be used in food environments
avoid direct contact with food



LF Code: 3092214
GEV Code: LF3092214

DETERGENT STAINLESS STEEL SPRAY 500 ml

to restore stainless steel surfaces
protects and polishes surfaces



LF Code: 3092267
GEV Code: 890023

DETERGENT FOR STAINL. STEEL WÜRTH 400ml



LF Code: 3092290
GEV Code: LF3092290

DISINFECTANT DETERGENT SANITRE 1 L

amphoteric sanitizer for food surfaces
for the cleaning and sanitizing of floors,
worktops and food equipment
Reg. N°19277 of the Italian Ministry of
Health



LF Code: 3092226
GEV Code: LF3092226

LIQUID DISINFECTANT DETERGENT 5 L

100% biodegradable
Recommended for floors, walls, working
surfaces, evaporators, etc.
Removes all organic residue (even if en-
crusted)
Ensures perfect surface hygienisation
Non-aggressive for the user
Prevents pipe clogging thanks to the con-
tinuous enzymatic action
Dosage: 1% in hot water

TOP COOKERS CLEANING AND SANITIZING PRODUCTS



LF Code: 3092330
GEV Code: LF3092330

DETERGENT DISINFECTANT 750 ml

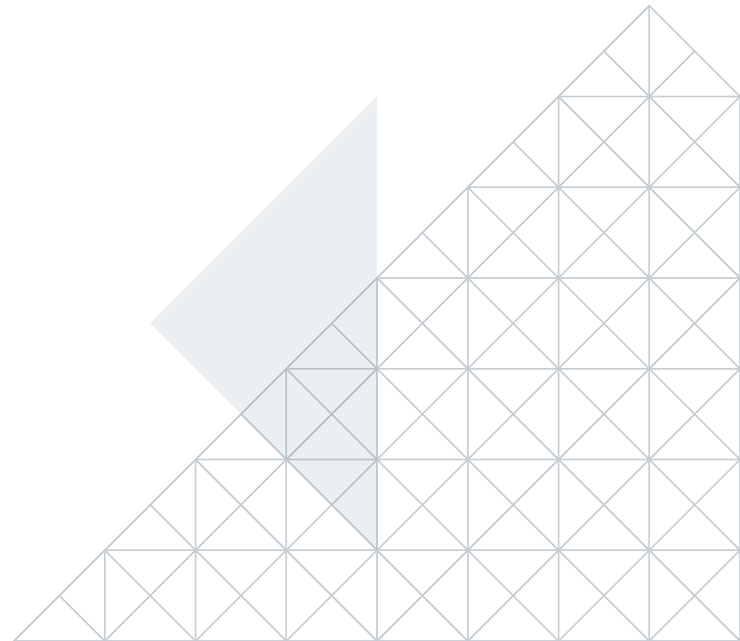
for cleaning, degreasing, polishing and sanitizing all equipment, tops and surfaces. It is specific to clean and sanitize hospitals, retirement homes, schools and gyms, besides industrial, food and catering sector



LF Code: 3394361
GEV Code: 890206

CONTACTS CLEANER SPRAY KD/E/2S 200 ml

specific product to degrease and clean all the electric contacts, suit. for UHF and VHF groups, electronic components, micro-mechanisms of high precision, it does not corrode nor leaves residues, it does not oxidise treated parts.



TOP COOKERS TOOLS AND CONSUMABLES



LF Code: 3180102
GEV Code: 890101

SILICONE GREASE 150 g

to lubricate taps, valves, pumps
to grease bearings and threadings
hot and cold water resistant
water-repellent



LF Code: 5056894
GEV Code: 890060

SILICONE SEALANT PACTAN 7055

310 ml - colour black
to glue glass-ceramic
heat resistant up to 150°C



LF Code: 5012699
GEV Code: H890005

OIL MAYOR WHITE 17 kg - 20 L



LF Code: 3092178
GEV Code: LF3092178

GREASE S6959 GEB 20 g

special grease for valves and gas taps



LF Code: 3092177
GEV Code: LF3092177

GREASE MOLYKOTE1102 50 g

for gas valves and taps
max operating temperature +175°C



LF Code: 3180002
GEV Code: 890102

GREASE STABURAGS N32 50 g

high quality grease for high temperatures
to lubricate gas taps



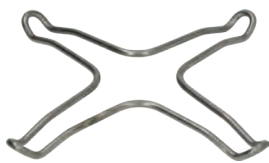
LF Code: 3180041
GEV Code: LF3180041

ROST OFF PLUS LUBRICATING SPRAY 300 ml

high penetration capacity throughout
rust and corrosion, releases screws and
nuts, eliminates rust and protects from
corrosion, the addition of organic molyb-
denum guarantees an excellent lubrication
capacity of the surface, without any resins
and acids, it does not damage rubber or
plastic materials
operating temperature -10+140°C
flash point 200°C

SEE COMPLETE LISTING ON WEBSITE
WWW.GEV-ONLINE.COM
WWW.LFSPAREPARTS724.COM

TOP COOKERS ACCESSORIES



LF Code: 3354001
GEV Code: 210001

REDUCER FOR MOKA POT 265x265 mm

in stainless steel
matt version



LF Code: 3160342
GEV Code: 692717

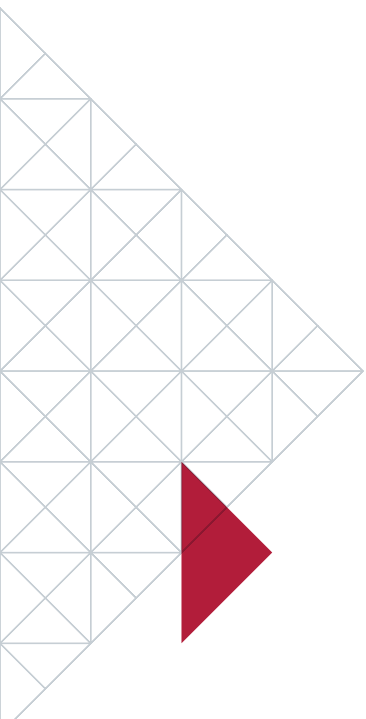
DRAIN-FILTER STAINLESS STEEL 76x76 mm



LF Code: 3162013
GEV Code: 693143

MIDDLE FORK

square shaft hole 12x12 mm
overall length 141 mm



TOP COOKERS EXTRAORDINARY MAINTENANCE



LF Code: 3311098
GEV Code: 490018



LF Code: 3311065
GEV Code: 490074



LF Code: 3020033
GEV Code: 107984

ELECTRIC HOT PLATE \varnothing 220 mm 2000W 230V

"ECODESIGN" MODEL
electrical screw connections
with STAINLESS steel edge
for electric cooking top

ELECTRIC HOT PLATE 4000W 400V

dimensions 300x300 mm
terminal block electric connections
with STAINLESS steel edge
for electric cooking top

ONE-FLAME PILOT BURNER SIT

multigas nozzle
with bracket 2 positions
external regulation through 7 mm nut



LF Code: 3025755
GEV Code: 107002



LF Code: 3023161
GEV Code: 104156



LF Code: 3348005
GEV Code: 101089

BURNER COMPLETE MOUNT. DIST. 120 mm

with central flame
4000-7000 Kcal/h
height 54 mm - \varnothing 80 mm - pipe \varnothing 27 mm

BURNER 445x200 mm

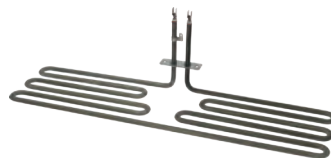
made of stainless steel

GAS TAP 22S/O

with pilot flame, with horizontal flange
fittings \varnothing M20x1.5 mm, with flow regulator
thermocouple connection M8x1
D-shaped pin \varnothing 10x8 mm



LF Code: 5028755
GEV Code: 418279



LF Code: 3755602
GEV Code: 418003



LF Code: 3351021
GEV Code: 380139

HEATING ELEMENT 1200W 230V

length 502 mm - width 50 mm
height 58 mm

HEATING ELEMENT 3000W 230V

length 125 mm - width 525 mm
height 50 mm - flange 70x22 mm

POWER RELAY FINDER 62.82.8.230.0000

230V 50/60Hz
2 exchange contacts 16A



LF Code: 3454005
GEV Code: 380108



LF Code: 3351016
GEV Code: 400105

CONTACTOR ABB AF16-30-10-13

17A 400V 7.5Kw - coil 100/250V 50/60Hz
3 normally open contacts
1 normally open auxiliary contact

RELAY CRYDOM SOB667330

SEE COMPLETE LISTING ON WEBSITE
WWW.GEV-ONLINE.COM
WWW.LFSPAREPARTS724.COM

TOP COOKERS EXTRAORDINARY MAINTENANCE



LF Code: 3444595
GEV Code: 371320

SINGLE-PHASE THERMOSTAT 40-280°C

D-shaped pin \varnothing 6x4.6 mm
capillary 850 mm - 16A 400V
bulb \varnothing 3x145 mm



LF Code: 3241396
GEV Code: 111576

SELF-ADHESIVE DISC PILOT SYMBOL

external \varnothing 68 mm



LF Code: 3241637
GEV Code: 110121

BLACK KNOB \varnothing 50 mm 60°-200°C

D-shaped hole 6x4.6 mm - flat part up
for EGO thermostat



LF Code: 3356007
GEV Code: 541673

DRAIN TAP \varnothing 1"1/2F TECNO

TAPERED SEAL - swivel nut \varnothing 1"1/2F
with gasket
for BOILING PAN



LF Code: 3356177
GEV Code: 542185

TAP REPAIR KIT \varnothing 2"F

for drain tap



LF Code: 3053008
GEV Code: LF3053008

RIGHT-LEFTHAND DOOR HINGE FOR OVEN

mounting distance 175 mm - overall length
205
height 156 mm



LF Code: 3053116
GEV Code: 514226

HINGE SPRING \varnothing 32x195 mm

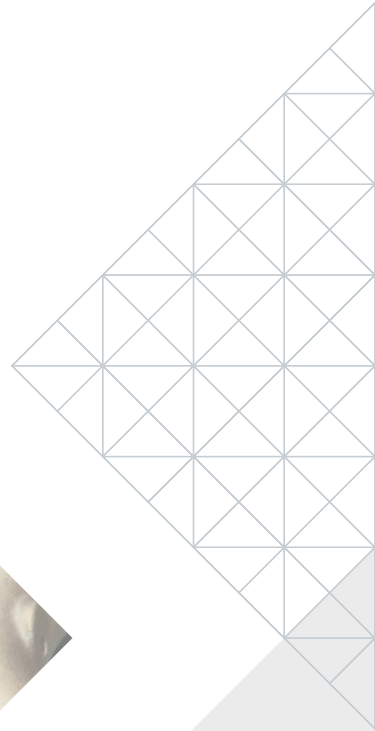
for PAN 700-900 PROTAGONISTA
for BRATT PAN 700-900 PROTAGONISTA

CLEANING AND SANITIZING PRODUCTS

TOOLS AND CONSUMABLES

ACCESSORIES

EXTRAORDINARY MAINTENANCE



FRYERS CLEANING AND SANITIZING PRODUCTS



LF Code: 3092212
GEV Code: LF3092212

DEGREASER FOR FRYER RENOFRIT 5 L

for industrial fryers
to dissolve and remove all carbonized
deposits, for immersion



LF Code: 3092347
GEV Code: 802212

DETERGENT RAPID GREASE 1 L

degreasing detergent for grids and plates
hot use. for use instructions, see attached
documentation



LF Code: 3092187
GEV Code: LF3092187

DEGREASING DETERGENT ND-150 EXTRA 5 L

food-safe
for the removal of grease, oil, wax, ink,
mould and every other residue that is hard
to remove, to be diluted 1:5 up to 1:50
not flammable, ideal for the cleaning of
fryers after they have been emptied, for
hood filters, for washing station etc.



LF Code: 3092186
GEV Code: 890338

DEGREASING DETERGENT ND-150 EXTRA 1 L

food-safe
for the removal of grease, oil, wax, ink,
mould and every other residue that is hard
to remo, to be diluted 1:5 up to 1:50
not flammable, ideal for the cleaning of
fryers after they have been emptied, for
hood filters, for washing station etc.



LF Code: 3092069
GEV Code: LF3092069

STAINLESS STEEL CLEANER 500 ml

for cleaning of stainless steel, chrome,
brass, enamelled metal surfaces,
light alloys and non-ferrous metals
can be used in food environments
avoid direct contact with food



LF Code: 3092214
GEV Code: LF3092214

DETERGENT STAINLESS STEEL SPRAY 500 ml

to restore stainless steel surfaces
protects and polishes surfaces



LF Code: 3092267
GEV Code: 890023

DETERGENT FOR STAINL. STEEL WÜRTH 400ml



LF Code: 3092290
GEV Code: LF3092290

DISINFECTANT DETERGENT SANITRE 1 L

amphoteric sanitizer for food surfaces
for the cleaning and sanitizing of floors,
worktops and food equipment
Reg. N°19277 of the Italian Ministry of
Health



LF Code: 3092226
GEV Code: LF3092226

LIQUID DISINFECTANT DETERGENT 5 L

100% biodegradable
Recommended for floors, walls, working
surfaces, evaporators, etc.
Removes all organic residue (even if
encrusted)
Ensures perfect surface hygienisation
Non-aggressive for the user
Prevents pipe clogging thanks to the con-
tinuous enzymatic action
Dosage: 1% in hot water

FRYERS CLEANING AND SANITIZING PRODUCTS



LF Code: 3092330
GEV Code: LF3092330

DETERGENT DISINFECTANT 750 ml

for cleaning, degreasing, polishing and sanitizing all equipment, tops and surfaces. It is specific to clean and sanitize hospitals, retirement homes, schools and gyms, besides industrial, food and catering sector



LF Code: 3394361
GEV Code: 890206

CONTACTS CLEANER SPRAY KD/E/2S 200 ml

specific product to degrease and clean all the electric contacts, suit. for UHF and VHF groups, electronic components, micro-mechanisms of high precision, it does not corrode nor leaves residues, it does not oxidise treated parts.

SEE COMPLETE LISTING ON WEBSITE
WWW.GEV-ONLINE.COM
WWW.LFSPAREPARTS724.COM

FRYERS TOOLS AND CONSUMABLES



LF Code: 3180102
GEV Code: 890101

SILICONE GREASE 150 g

to lubricate taps, valves, pumps
to grease bearings and threadings
hot and cold water resistant
water-repellent



LF Code: 3180052
GEV Code: 890015

RED HIGH TEMPERATURE SEALER 280 ml

operating temperature $-65+260^{\circ}\text{C}$ with
peaks 320°C
for OVEN GASKETS



LF Code: 3092178
GEV Code: LF3092178

GREASE S6959 GEB 20 g

special grease for valves and gas taps



LF Code: 3092177
GEV Code: LF3092177

GREASE MOLYKOTE1102 50 g

for gas valves and taps
max operating temperature $+175^{\circ}\text{C}$



LF Code: 3180002
GEV Code: 890102

GREASE STABURAGS N32 50 g

high quality grease for high temperatures
to lubricate gas taps



LF Code: 3180041
GEV Code: LF3180041

ROST OFF PLUS LUBRICATING SPRAY 300 ml

high penetration capacity throughout
rust and corrosion, releases screws and
nuts, eliminates rust and protects from
corrosion, the addition of organic molyb-
denum guarantees an excellent lubrication
capacity of the surface,
without any resins and acids
it does not damage rubber or plastic
materials
operating temperature $-10+140^{\circ}\text{C}$
flash point 200°C

FRYERS ACCESSORIES



LF Code: 3055340
GEV Code: 693017

FRYER BASKET 250x225x105 mm

made of chrome-plated iron



LF Code: 3055177
GEV Code: 970374

FRYER BASKET 270x235x105 mm

made of chrome-plated iron
for FRYER 12 l



LF Code: 3055359
GEV Code: 970679

FRYER BASKET 300x220x115 mm

made of chrome plated iron



LF Code: 3160370
GEV Code: LF3160370

FINE MESH FILTER 300x100x170 mm

SEE COMPLETE LISTING ON WEBSITE
WWW.GEV-ONLINE.COM
WWW.LFSPAREPARTS724.COM

FRYERS EXTRAORDINARY MAINTENANCE



LF Code: 3023255
GEV Code: 105163

VERTICAL BURNER ø 75x180 mm

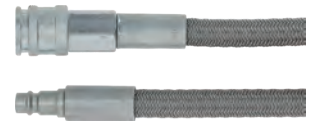
made of chrome-plated iron



LF Code: 3523023
GEV Code: 101111

VALVE 710 MINISIT FOR FRYER 50÷190°C

inlet ø 1/2"F - outlet ø 3/8"F
thermocouple connection M9x1
maximum gas inlet pressure 50 mbar
ambient temperature 0÷60°C
length capillary 1200 mm
bulb ø 5x95 mm
with an elbow flange ø 3/8"F



LF Code: 2111409
GEV Code: 694349

OIL DRAIN PIPE 1500 mm

with quick connections M-F



LF Code: 3755094
GEV Code: 420177

HEATING ELEMENT 2100W 230V

length 290 mm - width 50 mm
height 205 mm - fittings M14x1.5 mm



LF Code: 3755858
GEV Code: 416825

HEATING ELEMENT 12000W 230/400V

length 325 mm - width 180 mm
fitting M54x1.5 mm - complete with cables
complete with O-rings
with 2 holes for bulb



LF Code: 3240410
GEV Code: 345032

MICROSWITCH 16(4)A 250V



LF Code: 3351021
GEV Code: 380139

POWER RELAY FINDER 62.82.8.230.0000

230V 50/60Hz
2 exchange contacts 16A



LF Code: 3454005
GEV Code: 380108

CONTACTOR ABB AF16-30-10-13

17A 400V 7.5Kw - coil 100/250V 50/60Hz
3 normally open contacts
1 normally open auxiliary contact



LF Code: 3351016
GEV Code: 400105

RELAY CRYDOM SOB667330



LF Code: 3744223
GEV Code: 375104

THERMOSTAT THREE-PHASE 230°C

with manual reset
covered capillary length 830 mm
bulb \varnothing 6x167mm - with stuffing gland
fitting M10x1



LF Code: 5112409
GEV Code: 550498

BULB FASTENING CLIP

for heating element thermostat
for pipe \varnothing 8.5 mm - for bulb \varnothing 4 mm



LF Code: 3523060
GEV Code: 100820

OIL SEAL FITTING \varnothing 6.5 mm

internal thread M10x0.75 - external thread
M14x1.5



LF Code: 3356149
GEV Code: 542290

DRAIN TAP \varnothing 2" F TECNO

BRASS CAP - with swivel nut \varnothing 2" F



LF Code: 5041924
GEV Code: 532725

O-RING 0177 VITON

ring thickness 3.53 mm - internal \varnothing 74.60
mm

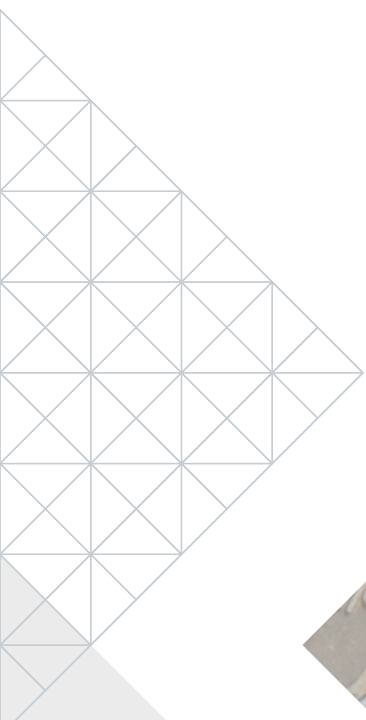
PASTA COOKERS

CLEANING AND SANITIZING PRODUCTS

TOOLS AND CONSUMABLES

ACCESSORIES

EXTRAORDINARY MAINTENANCE



PASTA COOKERS CLEANING AND SANITIZING PRODUCTS



LF Code: 40S2362
GEV Code: LF40S2362



LF Code: 3092071
GEV Code: LF3092071



LF Code: 5103265
GEV Code: 802253

SCALE REMOVER "C-30" 5 L

specific for dishwashers and professional ovens, for limescale elimination from boilers, circuits, plumbings and heat exchangers. for use instructions, see attached documentation

BIOLOGICAL DRAIN CLEANER 10 TABLETS

blister pack with 10 tablets
it prevents and removes drain clogging

DEGREASER GLANCIL "EASY&SAFE" 750 ml

for all surfaces of professional kitchens contains non-ionic surfactants, contains perfume, dissolves proteins, starch and oil eliminates grease from all surfaces and objects, Washable and alkali-resistant particularly suitable for floor cleaning and extractor hoods



LF Code: 3092069
GEV Code: LF3092069



LF Code: 3092267
GEV Code: 890023



LF Code: 3092290
GEV Code: LF3092290

STAINLESS STEEL CLEANER 500 ml

for cleaning of stainless steel, chrome, brass, enamelled metal surfaces, light alloys and non-ferrous metals can be used in food environments avoid direct contact with food

DETERGENT FOR STAINL. STEEL WÜRTH 400ml

DISINFECTANT DETERGENT SANITRE 1 L

amphoteric sanitizer for food surfaces for the cleaning and sanitizing of floors, worktops and food equipment Reg. N°19277 of the Italian Ministry of Health



LF Code: 3092226
GEV Code: LF3092226



LF Code: 3092330
GEV Code: LF3092330



LF Code: 3394361
GEV Code: 890206

LIQUID DISINFECTANT DETERGENT 5 L

100% biodegradable
Recommended for floors, walls, working surfaces, evaporators, etc.
Removes all organic residue (even if encrusted)
Ensures perfect surface hygienisation
Non-aggressive for the user
Prevents pipe clogging thanks to the continuous enzymatic action
Dosage: 1% in hot water

DETERGENT DISINFECTANT 750 ml

for cleaning, degreasing, polishing and sanitizing all equipment, tops and surfaces. It is specific to clean and sanitize hospitals, retirement homes, schools and gyms, besides industrial, food and catering sector

CONTACTS CLEANER SPRAY KD/E/2S 200 ml

specific product to degrease and clean all the electric contacts, suit. for UHF and VHF groups, electronic components, micro-mechanisms of high precision, it does not corrode nor leaves residues, it does not oxidise treated parts.

SEE COMPLETE LISTING ON WEBSITE
WWW.GEV-ONLINE.COM
WWW.LFSPAREPARTS724.COM

PASTA COOKERS TOOLS AND CONSUMABLES



LF Code: 3180102
GEV Code: 890101

SILICONE GREASE 150 g

to lubricate taps, valves, pumps
to grease bearings and threadings
hot and cold water resistant
water-repellent



LF Code: 3092158
GEV Code: 890202

SILICONE MASTIC TRANSLUCENT GEB 310 ml

temperature range from - 50° to + 230°C
to glue glass with glass or glass and metal



LF Code: 3092178
GEV Code: LF3092178

GREASE S6959 GEB 20 g

special grease for valves and gas taps



LF Code: 3092177
GEV Code: LF3092177

GREASE MOLYKOTE1102 50 g

for gas valves and taps
max operating temperature +175°C



LF Code: 3180002
GEV Code: 890102

GREASE STABURAGS N32 50 g

high quality grease for high temperatures
to lubricate gas taps



LF Code: 3180041
GEV Code: LF3180041

ROST OFF PLUS LUBRICATING SPRAY 300 ml

high penetration capacity throughout
rust and corrosion, releases screws and
nuts, eliminates rust and protects from
corrosion, the addition of organic molyb-
denum guarantees an excellent lubrication
capacity of the surface, without any resins
and acids, it does not damage rubber or
plastic materials
operating temperature -10+140°C
flash point 200°C

PASTA COOKERS ACCESSORIES



LF Code: 3055283
GEV Code: 970714

BASKET FOR PASTA COOKER **ø 145x200 mm**

of STAINLESS steel



LF Code: 3055337
GEV Code: 970385

PASTA COOKER BASKET **140x140x205 mm LEFT**

made of STAINLESS STEEL



LF Code: 3160265
GEV Code: 694000

STAINLESS STEEL DRAIN FILTER **ø 50 mm**

SEE COMPLETE LISTING ON WEBSITE
WWW.GEV-ONLINE.COM
WWW.LFSPAREPARTS724.COM

PASTA COOKERS EXTRAORDINARY MAINTENANCE



LF Code: 3020498
GEV Code: 102975

PILOT BURNER RH 2 FLAMES

with sparking plug
with plug fitting
with thermocouple fitting



LF Code: 3020009
GEV Code: 100049

PILOT BURNER PRINTED SIT 2 FLAMES

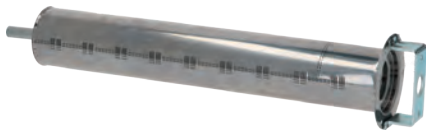
without sparking plug, gas nozzle and gasket



LF Code: 3023141
GEV Code: 105344

VERTICAL BURNER 305x55 mm

made of chrome-plated iron



LF Code: 3023266
GEV Code: 105498

BURNER ø 50x310 mm

overall length 370 mm
made of STAINLESS steel



LF Code: 3181502
GEV Code: 101009

SPARK GENERATOR 2 OUTLETS

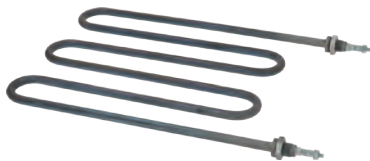
1.5Vdc battery powered



LF Code: 3397126
GEV Code: 379331

PROBE TEMPERATURE PT1000

2 wires - bulb ø 3x58 mm
probe length 70 mm
cable length 650 mm
with fastening coupling M10x1 mm



LF Code: 3855009
GEV Code: 416728

HEATING ELEMENT 2200W 230V

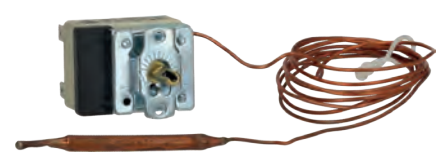
length 265 mm - width 200 mm
fittings ø 1/4"



LF Code: 3355872
GEV Code: 415971

HEATING ELEMENT 9000W 230V

length 325 mm - width 250 mm
coupling ø 40 mm
complete with gaskets
complete with cables - with bulb sheath



LF Code: 5048481
GEV Code: 375094

THERMOSTAT SINGLE-PHASE 30-110°C

D-shaped pin ø 6x4.6 mm
capillary length 1500 mm
bulb ø 6x80 mm



LF Code: 5009882
GEV Code: 514120

BALL VALVE ø 3/4" F

outlet ø internal 22 mm



LF Code: 3356051
GEV Code: 541540

DRAIN TAP ø 3/4" F



LF Code: 3186013
GEV Code: 510408

O-RING 06187 EPDM ø 58 mm

ring thickness 5.34 mm
internal ø 47.00 mm

PASTA COOKERS EXTRAORDINARY MAINTENANCE



LF Code: 3351021
GEV Code: 380139

POWER RELAY FINDER 62.82.8.230.0000

230V 50/60Hz
2 exchange contacts 16A



LF Code: 3454005
GEV Code: 380108

CONTACTOR ABB AF16-30-10-13

17A 400V 7.5Kw - coil 100/250V 50/60Hz
3 normally open contacts
1 normally open auxiliary contact



LF Code: 3351016
GEV Code: 400105

RELAY CRYDOM SOB667330



LF Code: 3120558
GEV Code: 370391

SOLENOID VALVE L182B17 3/4"FF 24V

EX L180 - for water - NC
max. temperature 100°C
max. differential pressure 16 bar
coil 24V 50/60Hz



LF Code: 7101532
GEV Code: 374021

SOLENOID VALVE RPE R 253 2-WAY 180°

230V 50/60Hz - max. temperature 60°C
inlet 3/4"-two outlets ø 10.5 mm
food-safe sealing (adjuster/reducer not included)



LF Code: 40L3189
GEV Code: 512510

ADHESIVE GASKET 9x5 mm

SOLD PER LINEAR METRE

SEE COMPLETE LISTING ON WEBSITE
WWW.GEV-ONLINE.COM
WWW.LFSPAREPARTS724.COM

FOOD PROCESSING

ACCESSORIES

BLADES FOR MEAT SLICER

SPARES



FOOD PROCESSING ACCESSORIES



LF Code: 9494014
GEV Code: LF9494014

CHOPPING BOARD GREEN 500x300x20 mm

made of POLYETHYLENE - with retainers



LF Code: 9494004
GEV Code: LF9494004

CHOPPING BOARD WHITE 500x300x25 mm

made of POLYETHYLENE - with retainers



LF Code: 9494012
GEV Code: LF9494012

CHOPPING BOARD RED 500x300x20 mm

made of POLYETHYLENE - with retainers



LF Code: 9494011
GEV Code: LF9494011

CHOPPING BOARD BROWN 600x400x20 mm

made of POLYETHYLENE - with retainers



LF Code: 9494013
GEV Code: LF9494013

CHOPPING BOARD RED 600x400x20 mm

made of POLYETHYLENE - with retainers



LF Code: 9494009
GEV Code: LF9494009

CHOPPING BOARD YELLOW 600x400x20 mm

made of POLYETHYLENE - with retainers



LF Code: 9718152
GEV Code: LF9718152

PARING KNIFE BLADE 11 cm

green handle for vegetables and fruit
HACCP compliant - NSF certified



LF Code: 9718142
GEV Code: LF9718142

BREAD KNIFE SERRATED BLADE 21 cm

white handle for bread and dairy products
HACCP compliant - NSF certified



LF Code: 9718086
GEV Code: LF9718086

FRENCH CHEF'S KNIFE BLADE cm 18x3.7 mm

red handle for raw meat
HACCP compliant- NSF certified



LF Code: 9718168
GEV Code: LF9718168

SLICING KNIFE BLADE cm 33x7.6 mm

professional black handle
NSF certified



LF Code: 9718082
GEV Code: LF9718082

CARVING KNIFE BLADE 16 cm

red handle for raw meat
HACCP compliant- NSF certified



LF Code: 9718115
GEV Code: LF9718115

FRENCH CHEF'S KNIFE BLADE cm 22x4.2 mm

yellow handle for cooked meat and poultry
HACCP compliant - NSF certified

FOOD PROCESSING ACCESSORIES



LF Code: 9178012
GEV Code: LF9178012

GLOVES FOOD PREP. FOODHAND SIZE L

work glove for the food industry
good protection against dirty, fat
and scratches
CE n°1935/2004 - CE EN 420 approved



LF Code: 3394400
GEV Code: 801450

ACCUSHARP KNIFE SHARPENER

with customized screenprinting upon
request, minimum quantity for screenprint-
ing: 50 pieces



LF Code: 3394389
GEV Code: LF3394389

MULTIFUNCTION BLADE SHARPENER

sharpener for knives and scissors
sharpening device for slicers
with glass and tile cutter



LF Code: 9505017
GEV Code: LF9505017

KNIFE STERIL.UNIT ST.STEEL260x112xH330mm

NSF certified - HACCP compliant
tank for liquid sanitiser
removable pieces for easy cleaning



LF Code: 9014164
GEV Code: LF9014164

PLIERS ST.STEEL F/SLICED MEAT L. 12 cm



LF Code: 9009000
GEV Code: LF9009000

DRIP-FEED OILER 50 cl WITH OIL



LF Code: 9394801
GEV Code: 580147

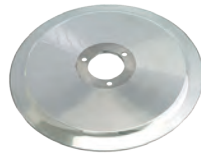
MANUAL COUNTER TOP CAN OPENER

in cemented steel
overall length knob included 805 mm
height without knob 605 mm
width 215 mm
maximum can height 250 mm

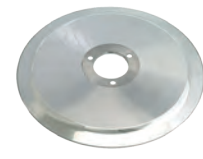
FOOD PROCESSING BLADES FOR MEAT SLICERS



LF Code: 9006538
GEV Code: LF9006538



LF Code: 9006525
GEV Code: 698214



LF Code: 9006524
GEV Code: 697385

BLADE ø 350-57-4-280 MOD.C

B = outer ø 350 mm
D = central hole ø 57 mm
C = blade inner ø 280 mm
4x fastening screws
100CR6 forged steel

BLADE ø 300-40-3-254 MOD.C

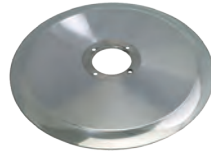
B = outer ø 300 mm
D = central hole ø 40 mm
C = blade inner ø 254 mm
blade height 22.5 mm
3x fastening screws
100CR6 forged steel

BLADE GRUND & BUNSE ø 300-40-3-250 MOD.C

B = outer ø 300 mm
D = central hole ø 40 mm
C = blade inner ø 250 mm
blade height 20 mm
3x fastening screws
100CR6 forged steel



LF Code: 9006559
GEV Code: 702173



LF Code: 9006535
GEV Code: 697375

BLADE 300-57-4-254 MOD.C W/EXTRACT.HOLES

B = outer ø 300 mm
D = central hole ø 57 mm
C = blade inner ø 254 mm
4x fastening screws
with extraction holes
100CR6 forged steel

ST. STEEL BLADE ø 330-57-4-270 MOD.C

B = external ø 330 mm
D = central hole ø 57 mm
C = blade internal ø 270 mm
4 fastening screws
100CR6 forged stainless steel

SEE COMPLETE LISTING ON WEBSITE
WWW.GEV-ONLINE.COM
WWW.LFSPAREPARTS724.COM

FOOD PROCESSING SPARES



LF Code: 9013135
GEV Code: 697392



LF Code: 9013220
GEV Code: 697593



LF Code: 9013029
GEV Code: 702174

RIMMED GRINDERS 50-8-8

A = external \varnothing 50 mm
B = hole \varnothing 8 mm
H = height 8 mm
FINE GRAIN

EMERY WHEEL WITH STEP AND DRUM 50-8-8

A = external \varnothing 50 mm
B = hole \varnothing 8 mm
H = height 8 mm
COARSE GRAIN

CUP GRINDERS 51-8-12

A = external \varnothing 51 mm
B = hole \varnothing 8 mm
H = height 12 mm
FINE GRAIN



LF Code: 9012015
GEV Code: 697387



LF Code: 9014150
GEV Code: 700725



LF Code: 9062020
GEV Code: LF9062020

SUCTION FOOT WITH SHAFT M5

length 10 mm
base \varnothing 37x26 mm

CARRIAGE HANDLE DISTANCE BW HOLES 114 mm

thread \varnothing 6 mm - length 132 mm

BELT MULTIGRIP TB2 330 H12 5 GROOVES



LF Code: 9180103
GEV Code: LF9180103



LF Code: 7150817
GEV Code: 890256

PTFE BAND HEIGHT 45 mm - 3 m

for VACUUM PACKAGING MACHINE

VACUUM MAINTENANCE KIT

the kit includes:
1 PTFE band 490x45 mm
1 PTFE band 430x15 mm
1 silicone gasket 2030 mm - section 10x7 mm
1 silicone gasket 425 mm - section 17x8 mm
1 soldering heating element 300x3.5 mm
1 oil tube VM32 300 ml

FOOD PROCESSING SPARES



LF Code: 9014600
GEV Code: 696021



LF Code: 9014601
GEV Code: 696022



LF Code: 9014602
GEV Code: 696023

STAINLESS STEEL KNIFE F/MEAT MINCER 8

model ENTERPRISE 8 self-sharpening
external \varnothing 55 mm - square hole 10x10 mm

STAINLESS STEEL KNIFE F/MEAT MINCER 12

model ENTERPRISE 12 self-sharpening
external \varnothing 60 mm - square hole 12x12 mm

STAINLESS STEEL KNIFE F/MEAT MINCER 22

model ENTERPRISE 22 self-sharpening
external \varnothing 73 mm - square hole 13x13 mm



LF Code: 9015501
GEV Code: LF9015501



LF Code: 9750014
GEV Code: 701756



LF Code: 9718048
GEV Code: 697883

SELF-SHARPENING STAINL. STEEL PLATE 8/2

model 8 ENTERPRISE self-sharpening
ejection holes \varnothing 2 mm
external \varnothing 61.8 mm - middle hole \varnothing 9 mm

SMOOTH BLADE ASSEMBLY WITH DRUM

boss \varnothing 60 mm - overall height 92 mm

KNIFE GROUP WITH PIN

overall height 62 mm



LF Code: 9014160
GEV Code: 698279



LF Code: 9016014
GEV Code: 699033



LF Code: 9063031
GEV Code: LF9063031

MEAT MINCER MASHER \varnothing 50x100 mm

empty inside

BAND SAW BLADE 1650xh16 mm DIAMOND BLADE

6.35 mm teething distance
diamond points

BEARING \varnothing 20 mm BUSHING MOUNTED

external \varnothing 20 mm - internal \varnothing 5 mm -
thickn.8 mm

SEE COMPLETE LISTING ON WEBSITE
WWW.GEV-ONLINE.COM
WWW.LFSPAREPARTS724.COM

FOOD PROCESSING SPARES



LF Code: 9014076
GEV Code: 401513

RECTANG.PUSH-BUTT.PANEL 0-I WHITE-BLACK

with 6-threads cable
external dimensions 75x40 mm



LF Code: 9014072
GEV Code: 403002

SMALL PUSH-BUTTON PANEL 0-I WITH BOARD

with cable
external dimensions 120x47 mm



LF Code: 9014068
GEV Code: 401357

BUTTON PANEL 0-I BLACK-WHITE 16A 250V

GIOVENZANA - 1 normally closed contact
1 normally open contact
with indicator light
mounting hole \varnothing 22 mm



LF Code: 9014064
GEV Code: LF9014064

MUSHROOM PUSH-BUTTON RED 4A 400V

CEMA - 1 contact NC
mounting hole \varnothing 22 mm



LF Code: 9014019
GEV Code: 301336

MODIFICATION KIT 230V 0.75HP

maximum load 0.75Hp 12(2)A 230V
power supply 230V 50/60Hz
watertight box IP54 with cable grommets
box dimensions 107x107x58 mm
power cord with plug PE1663 IP44
preset cable for in-line micro switch
RED/GREEN touch-sensitive button w/
indic.light
in compliance with EC regulation
for SLICER



LF Code: 9014020
GEV Code: 401885

VARIATION KIT 230/400V 0.75HP

maximum load 0.75Hp 12(2)A 400V
power supply 230/400V 50/60Hz
watertight box IP54 with cable grommets
box dimensions 107x107x58 mm
power cord with plug PE1664 IP44
preset cable for in-line microswitch
GREEN/RED touch-sensitive button w/
indic.light
in compliance with EC regulation
for SLICER



LF Code: 9446007
GEV Code: LF9446007

TIMER KIT 30 MINUTES G30

complete with knob
mechanical movement with balance wheel
manually set mechanical timer
30 minutes manually set cycle
contact capacity 16(3)A 250V
max temperature 125°C
square pin \varnothing 6x4.6 mm



LF Code: 9057004
GEV Code: LF9057004

SINGLE-PHASE SEL.SWITCH 0-1 POSITIONS

contact capacity 16A 600V - max 60/75°C
shaft 7x8 mm
input connection 1-3
output connection 2-4



LF Code: 3240216
GEV Code: 345504

MAGNETIC MICROSWITCH E5221V

0.04A 250V - contact NO
head 40x13x8 mm
with cable length 1900 mm

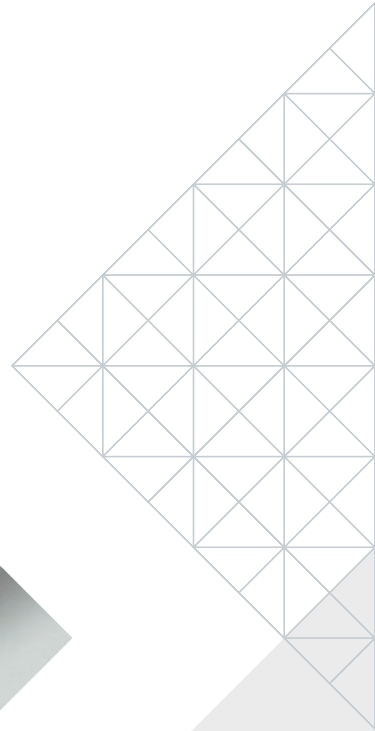
SNACKING

CLEANING AND SANITIZING PRODUCTS

TOOLS AND CONSUMABLES

ACCESSORIES

EXTRAORDINARY MAINTENANCE



SNACKING CLEANING AND SANITIZING PRODUCTS



LF Code: 40S2362
GEV Code: LF40S2362

SCALE REMOVER "C-30" 5 L

specific for dishwashers and professional ovens
for limescale elimination from boilers, circuits, plumbers and heat exchangers. for use instructions, see attached documentation



LF Code: 5103265
GEV Code: 802253

DEGREASER GLANCIL "EASY&SAFE" 750 ml

for all surfaces of professional kitchens contains non-ionic surfactants, contains perfume, dissolves proteins, starch and oil eliminates grease from all surfaces and objects, Washable and alkali-resistant particularly suitable for floor cleaning and extractor hoods



LF Code: 3092069
GEV Code: LF3092069

STAINLESS STEEL CLEANER 500 ml

for cleaning of stainless steel, chrome, brass, enamelled metal surfaces, light alloys and non-ferrous metals can be used in food environments avoid direct contact with food



LF Code: 3092214
GEV Code: LF3092214

DETERGENT STAINLESS STEEL SPRAY 500 ml

to restore stainless steel surfaces protects and polishes surfaces



LF Code: 3092267
GEV Code: 890023

DETERGENT FOR STAINL. STEEL WÜRTH 400ml



LF Code: 3092290
GEV Code: LF3092290

DISINFECTANT DETERGENT SANITRE 1 L

amphoteric sanitizer for food surfaces for the cleaning and sanitizing of floors, worktops and food equipment Reg. N°19277 of the Italian Ministry of Health



LF Code: 3092226
GEV Code: LF3092226

LIQUID DISINFECTANT DETERGENT 5 L

100% biodegradable
Recommended for floors, walls, working surfaces, evaporators, etc.
Removes all organic residue (even if encrusted)
Ensures perfect surface hygienisation
Non-aggressive for the user
Prevents pipe clogging thanks to the continuous enzymatic action
Dosage: 1% in hot water



LF Code: 3092330
GEV Code: LF3092330

DETERGENT DISINFECTANT 750 ml

for cleaning, degreasing, polishing and sanitizing all equipment, tops and surfaces. It is specific to clean and sanitize hospitals, retirement homes, schools and gyms, besides industrial, food and catering sector



LF Code: 3394361
GEV Code: 890206

CONTACTS CLEANER SPRAY KD/E/2S 200 ml

specific product to degrease and clean all the electric contacts, suit. for UHF and VHF groups, electronic components, micro-mechanisms of high precision, it does not corrode nor leaves residues, it does not oxidise treated parts.



LF Code: 3092362
GEV Code: 890025

FOAM CLEANER LOS 4000 500ML

for plastic/glass
storage temperature max. 50 °C

SEE COMPLETE LISTING ON WEBSITE
WWW.GEV-ONLINE.COM
WWW.LFSPAREPARTS724.COM

SNACKING TOOLS AND CONSUMABLES



LF Code: 3180102
GEV Code: 890101

SILICONE GREASE 150 g

to lubricate taps, valves, pumps
to grease bearings and threadings
hot and cold water resistant
water-repellent



LF Code: 3180052
GEV Code: 890015

RED HIGH TEMPERATURE SEALER 280 ml

operating temperature $-65+260^{\circ}\text{C}$ with
peaks 320°C
for OVEN GASKETS



LF Code: 3092178
GEV Code: LF3092178

GREASE S6959 GEB 20 g

special grease for valves and gas taps



LF Code: 3092177
GEV Code: LF3092177

GREASE MOLYKOTE1102 50 g

for gas valves and taps
max operating temperature $+175^{\circ}\text{C}$



LF Code: 3180002
GEV Code: 890102

GREASE STABURAGS N32 50 g

high quality grease for high temperatures
to lubricate gas taps



LF Code: 3180111
GEV Code: 890295

FOOD-GRADE GREASE NUTROL WHITE 700 g

temperature range $-20/+200^{\circ}\text{C}$
NSF H1 - grade 1.5



LF Code: 3180041
GEV Code: LF3180041

ROST OFF PLUS LUBRICATING SPRAY 300 ml

high penetration capacity throughout
rust and corrosion, releases screws and
nuts, eliminates rust and protects from
corrosion, the addition of organic molyb-
denum guarantees an excellent lubrication
capacity of the surface, without any resins
and acids, it does not damage rubber or
plastic materials
operating temperature $-10+140^{\circ}\text{C}$
flash point 200°C



LF Code: 7102256
GEV Code: 693002

GLASS CONTAINER FOR HOT DOGS
ø 200x240 mm

SEE COMPLETE LISTING ON WEBSITE
WWW.GEV-ONLINE.COM
WWW.LFSPAREPARTS724.COM

SNACKING EXTRAORDINARY MAINTENANCE



LF Code: 3351021
GEV Code: 380139

POWER RELAY FINDER 62.82.8.230.0000

230V 50/60Hz
2 exchange contacts 16A



LF Code: 3454005
GEV Code: 380108

CONTACTOR ABB AF16-30-10-13

17A 400V 7.5Kw - coil 100/250V 50/60Hz
3 normally open contacts
1 normally open auxiliary contact



LF Code: 3351016
GEV Code: 400105

RELAY CRYDOM SOB667330



LF Code: 3755629
GEV Code: 416701

HEATING ELEMENT 1800W 240V

length 180 mm - width 195 mm
with cables



GEV Großküchen-Ersatzteil-Vertrieb GmbH

Gadastr. 4
85232 Bergkirchen - Germany
T +49 8142 6522-50
info@gev-online.com
www.gev-online.com

LF S.p.A. a socio unico

Via Voltri 80
47522 Cesena FC - Italy
T +39 0547 341111
info@lfspareparts.com
www.lfspareparts724.com

EPGC S.a.s.

13 Rue des Forts
59960 Neuville en Ferrain - France
T +33 3 20250621
epgc@epgc.com
www.epgc.com

Commercial Catering Spares Ltd.

Block C - Axis Point Hill Top Road
Heywood - Lancashire - OL10 2RQ - UK
T +44 1706 621 155
info@ccspares.co.uk
www.ccspares.co.uk

Atel S.r.l. a socio unico

Via Selvuzzis 51/2
33100 Udine UD - Italy
T +39 0432 602095
info@atelitalia.com
www.atelitalia.com