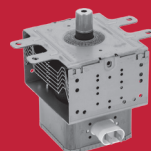
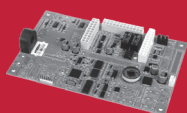


# Spare parts for speed cooking ovens

Enlarged range  
for all main brands

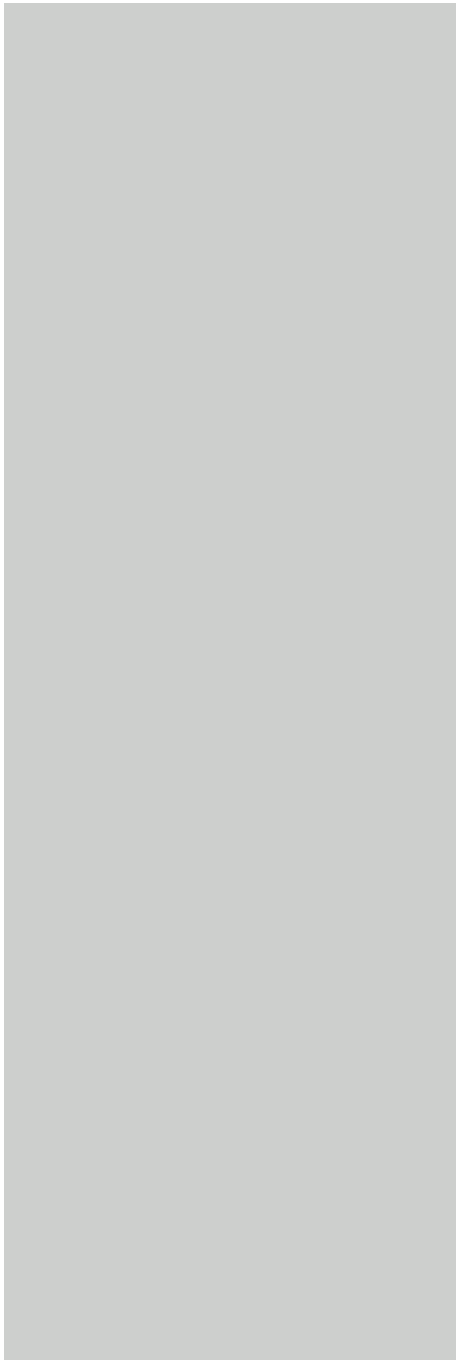


*More original  
than ever*



# Table of contents

Lainox	4
MenuMaster	8
TurboChef	9
Unox	16



# Lainox



LF Code: 5180472  
GEV Code: 770446

## CABLE ETHERNET

LAINOX LA19200190



LF Code: 5180839  
GEV Code: 720257

## ETHERNET DOOR

LAINOX LAR65303070



LF Code: 5180821  
GEV Code: 720258

## HINGE ORAC.B

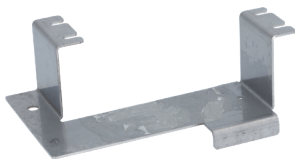
LAINOX LA19201010



LF Code: 5174285  
GEV Code: LF5174285

## DOOR HINGE RH-LH KIT

LAINOX LA19200270



LF Code: 5174304  
GEV Code: LF5174304

## DOOR HINGE BRACKET

LAINOX LA19200100



LF Code: 5180827  
GEV Code: 720259

## CAPACITOR.HV 50HZ ORAC.B

LAINOX LAR19100530



LF Code: 5180820  
GEV Code: 720260

## COOLING AIR FILTER ASSEMBLY ORAC.B

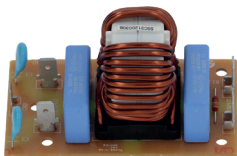
LAINOX LA19201060



LF Code: 5154625  
GEV Code: LF5154625

## LATERAL AIR FILTER 425x45mm

LAINOX LA19200470



LF Code: 5154630  
GEV Code: LF5154630

## INTERFERENCE FILTER

on board 80x45 mm

LAINOX LA19200490



LF Code: 5174300  
GEV Code: LF5174300

## FUSE 250V 12A

LAINOX LA19200580



LF Code: 5174299  
GEV Code: LF5174299

## RAPID FUSE 250VAC 30A

LAINOX LA19200590



LF Code: 5174305  
GEV Code: LF5174305

## BOTTOM GASKET 2280 MM

LAINOX LA19200600



LF Code: 5180840  
GEV Code: 720261

## GASKET KIT ORAC.B

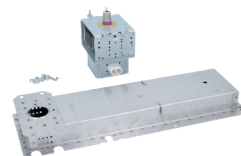
LAINOX LAR19100770



LF Code: 7111679  
GEV Code: 720262

## GASKET FRAME RB/RP101

LAINOX LA70044610, R70044610



LF Code: 5174289  
GEV Code: LF5174289

## MAGNETRON KIT TOSHIBA 2M303K(A)

complete with bracket and fixing bolts

LAINOX LA19200350



LF Code: 5180829  
GEV Code: 720263

## KIT MAGNETRON ORAC.B

LAINOX LAR19200790



LF Code: 5180825  
GEV Code: 720264

## HANDLE ASSEMBLY PURE SPEED ORAC.B

LAINOX LA69017720



LF Code: 5174294  
GEV Code: LF5174294

## MICRO-SWITCH KIT

complete with fuse and relay

LAINOX LA19200290



LF Code: 5180824  
GEV Code: 720265

## PUSH-BUTTON MICRO MK V12D10

LAINOX LA65260840

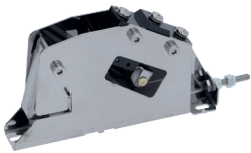


LF Code: 5154628  
GEV Code: LF5154628

## MICROSWITCH FOR DOOR OMRON

cable length 140 mm

LAINOX LA19200240



LF Code: 5180823  
GEV Code: 720267

## INTERLOCK [C] RIGHT ORAC.B

LAINOX LAR19100700



LF Code: 5180822  
GEV Code: 720268

## INTERLOCK [C] LEFT ORAC.B

LAINOX LAR19100690



LF Code: 5154629  
GEV Code: LF5154629

## TERMINAL 6 CONTACTS

LAINOX LA19200550



LF Code: 5174308  
GEV Code: LF5174308

## GEAR MOTOR ANTENNA KIT

complete with gears, gasket

LAINOX LA19200340



LF Code: 5180833  
GEV Code: 720288

## COOLING FAN KIT ORAC.B

LAINOX LAR65060580



LF Code: 5154627  
GEV Code: LF5154627

## FAN KIT DELE' WITH COVERS

LAINOX LA19200310



LF Code: 5154652  
GEV Code: LF5154652

## KIT TRIAC 40A WITH SNUBBER

LAINOX LA19200200

# Lainox



LF Code: 5180837  
GEV Code: 720269

## HEATING ELEMENT KIT 2800W 230V ORAC.B

LAINOX LAR65012440

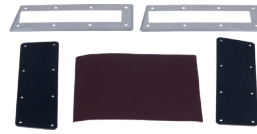


LF Code: 5174286  
GEV Code: LF5174286

## HEATING ELEMENT KIT 3000W 208V

ext.  $\varnothing$  200 mm - int.  $\varnothing$  185 mm  
overall height 40 mm  
flange 80x25 mm

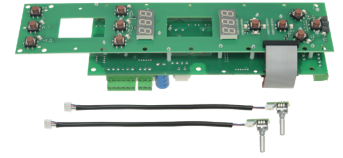
LAINOX LA19200400



LF Code: 5180819  
GEV Code: 720270

## GUIDE SCREEN KIT D ONDA ORAC.B

LAINOX LAR19100680



LF Code: 7106725  
GEV Code: 403830

## PUSH-BUTTON PANEL ELECTR. BOARD 330x105mm

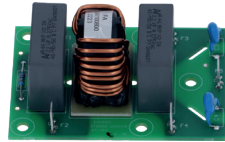
LAINOX LA65302220,  
LAR65302220, R65302220



LF Code: 5154622  
GEV Code: LF5154622

## DISPLAY BOARD ORACLE

LAINOX LA19200420



LF Code: 5180838  
GEV Code: 720271

## FILTER BOARD EMI ORAC.B

LAINOX LA65303580



LF Code: 5174297  
GEV Code: LF5174297

## TEMPERATURE SENSOR

2 wires - plug-in connection  
bulb  $\varnothing$  5x160 mm - bracket 40x13 mm - cable length 170 mm

LAINOX LA19200130



LF Code: 5180831  
GEV Code: 720272

## SPEAKER KIT ORAC.B

LAINOX LAR19100720



LF Code: 5180832  
GEV Code: 720273

## CASING ASSEMBLY ORAC.B BLACK PAINTED

LAINOX LA19201040N



LF Code: 5174306  
GEV Code: LF5174306

## SAFETY THERMOSTAT 3-PHASE 320°C

automatic reset - bulb  $\varnothing$  6x90 mm  
capillary covered 2000 mm  
complete with gasket

LAINOX LA19200410



LF Code: 5180836  
GEV Code: 720274

## SAFETY THERMOSTAT ORAC.B

LAINOX LAR65070540



LF Code: 5174301  
GEV Code: LF5174301

## CONTACT THERMOSTAT 150°C

LAINOX LA19200560



LF Code: 5174296  
GEV Code: LF5174296

---

**ELECTRONIC BOARD POWER  
SUPPLY 24VDC**

---

LAINOX LA19200510



LF Code: 5154648  
GEV Code: LF5154648

---

**AUTOTRANSFORMER AND  
SNUBBER KIT**

---

input 208/230V - output  
208/230 6A - output 120V 4A

LAINOX LA19200300



LF Code: 5154623  
GEV Code: LF5154623

---

**TRANSFORMER 230V 50Hz**

---

LAINOX LA19200370



LF Code: 5180828  
GEV Code: 720275

---

**TRANSFORMER HV AC 230V  
50HZ ORAC.B**

---

LAINOX LA19200820



LF Code: 5153128  
GEV Code: 770072

---

**BALL VALVE MOTOR. 220V  
3/4\".TEA**

---

LAINOX LA65110560, LAR65110560,  
R65110560

# MenuMASTER



LF Code: 7160447  
GEV Code: 365177

## ELECTRICAL CONDENSER 1 $\mu$ F 2100 V-AC

MENUMASTER 59001168



LF Code: 7160455  
GEV Code: 694696

## ADHESIVE GASKET 14x5 mm

SALE PER LINEAR METRE

MENUMASTER 59004077

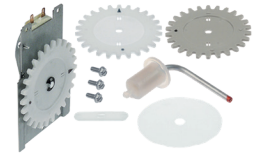


LF Code: 7160456  
GEV Code: 698814

## ANTENNA COVER OF CERAMIC 350x200xh4 mm

L350mm W 200m H4mm

MENUMASTER 59134300



LF Code: 7160457  
GEV Code: 701487

## ANTENNA MAINTENANCE KIT

MENUMASTER 12002512



LF Code: 7160454  
GEV Code: 403742

## TRIAC 25A 600W

model TG40E60  
including thermal conduction dough

MENUMASTER 59174520

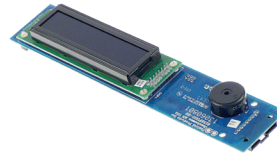


LF Code: 7160452  
GEV Code: 403639

## POWER ELECTRONIC BOARD 229x127 mm

suitable for model JET5192 519V2

MENUMASTER 591343649

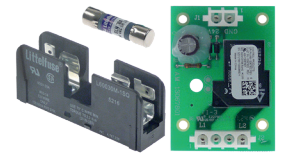


LF Code: 7160453  
GEV Code: 403409

## ELECTRONIC DISPLAY BOARD

suitable for model ACE14-P1333201M

MENUMASTER 59104126



LF Code: 7160451  
GEV Code: 403346

## RELAY BOARD FOR MICROWAVE

AXP5201/P-1333603M

MENUMASTER 59002117



LF Code: 7160448  
GEV Code: 378368

## TEMPERATURE PROBE

GLASS FIBRE CABLE PT100  
from -100 to 450°C

MENUMASTER 12000202



LF Code: 7160449  
GEV Code: 390944

## CONTACT THERMOSTAT 148.9°C

1NC 10A

MENUMASTER B5684130



LF Code: 7160458  
GEV Code: 701488

## FAN $\varnothing$ 150 mm

MENUMASTER 20093001



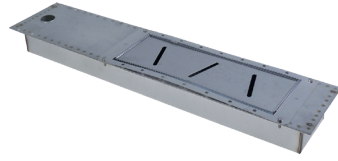
# TurboChef



LF Code: 5183423  
GEV Code: PT00007965

## CATALYST FOR CONVEYOR BOX

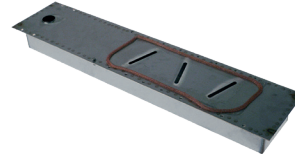
TURBOCHEF RWD-9191



LF Code: 5183409  
GEV Code: PT00007955

## FRONT CONVEYOR BOX

TURBOCHEF NGC-3016



LF Code: 5183413  
GEV Code: PT00007932

## REAR CONVEYOR BOX

TURBOCHEF NGC-3017



LF Code: 5182960  
GEV Code: PT00009797

## CONNECTION CABLE 4-POLE 150 MM

TURBOCHEF 100182



LF Code: 5158495  
GEV Code: PT00007134

## CONNECTION CABLE MAGNETRON

TURBOCHEF 100186



LF Code: 5183312  
GEV Code: PT00007863

## DOOR HINGE

TURBOCHEF NGC-1076-2



LF Code: 5158531  
GEV Code: PT00007388

## SILICONE SEALANT PERMATEX 85g

colour RED - for high temperatures 343 °C

TURBOCHEF 102563



LF Code: 5158437  
GEV Code: PT00007486

## CAPACITOR 0.91/ 0.19 µF 2500VAC

type N64H2511G25A4  
terminals 6.3 mm  
dimensions 109x71x46.5 mm

TURBOCHEF 100232



LF Code: 5183415  
GEV Code: PT00007914

## CAPACITOR ALUMINIUM 0.91µF 2500V

TURBOCHEF NGC-3020



LF Code: 5158436  
GEV Code: PT00007887

## CAPACITOR µF 1.15 2500VAC

type N42H2511G22A4  
frequency 50/60 Hz  
terminals 6.3 mm  
dimensions 107x66x40 mm  
with fixing bracket

TURBOCHEF N42H2511G22A4,  
NGC-3020-2



LF Code: 5183426  
GEV Code: PT00007950

## CONDENSER KIT FOR MICROWAVES

TURBOCHEF TC3-3220

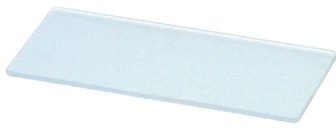


LF Code: 5183308  
GEV Code: PT00007874

## COVER

TURBOCHEF I5-9256

# TurboChef



LF Code: 7135110  
GEV Code: PT00007803

## COVER

TURBOCHEF I1-9701



LF Code: 5183305  
GEV Code: PT00007825

## DEFLECTOR LOWER

TURBOCHEF I5-3200



LF Code: 5183024  
GEV Code: PT00007179

## DETERGENT 1L TURBOCHEF - 6PCS

TURBOCHEF 103180CS



LF Code: 5183360  
GEV Code: PT00007884

## ABRASIVE DISC

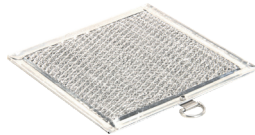
TURBOCHEF NGC-1187



LF Code: 5183052  
GEV Code: PT00007632

## AIR FILTER

TURBOCHEF ENC-1114



LF Code: 5184316  
GEV Code: PT00007730

## AIR FILTER

TURBOCHEF HCT-4067



LF Code: 5183306  
GEV Code: PT00007840

## AIR FILTER ALUMINIUM

TURBOCHEF I5-9039.B



LF Code: 5182984  
GEV Code: PT00007135

## NET FILTER 6A CAPACITY 0.055µF

TURBOCHEF 100539



LF Code: 5182986  
GEV Code: PT00007152

## NET FILTER 250V 40A 50/60Hz

TURBOCHEF 100548



LF Code: 5158433  
GEV Code: PT00007185

## FUSE ø 10.3x38 mm

600V 16A

TURBOCHEF 100593



LF Code: 5158434  
GEV Code: PT00007458

## FUSE HOLDER 30A 600V

adaptable fuse ø 10.4x35(38)mm

TURBOCHEF 100586

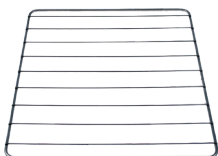


LF Code: 5158510  
GEV Code: PT00007267

## FUSE HOLDER 30A 800V

dimensions 77x41x30 mm

TURBOCHEF 103548



LF Code: 5183311  
GEV Code: PT00007879

## GRID 395x360 mm

TURBOCHEF NGC-1064-1



LF Code: 5183309  
GEV Code: PT00007830

## GASKET

TURBOCHEF I5-9309



LF Code: 5183362  
GEV Code: PT00007886

## GASKET

TURBOCHEF NGC-1308



LF Code: 5183310  
GEV Code: PT00010440

## GASKET 320x145 mm

TURBOCHEF NGC-1043



LF Code: 5183004  
GEV Code: PT00009857

## COPPER FIBRE GASKET 315 MM

TURBOCHEF 102021



LF Code: 5183046  
GEV Code: PT00007407

## GASKET PTFE Ø 8 mm

TURBOCHEF C0504



LF Code: 5183027  
GEV Code: PT00007574

## HUB

TURBOCHEF 104132



LF Code: 5158492  
GEV Code: PT00007880

## PUSH-BUTTON PANEL MEMBRANE 100x295 mm

TURBOCHEF NGC-1110-1



LF Code: 5158494  
GEV Code: PT00010455

## PUSH-BUTTON PANEL MEMBRANE 295x100 mm

TURBOCHEF NGC-1110-2



LF Code: 5158519  
GEV Code: PT00007908

## INSULATION

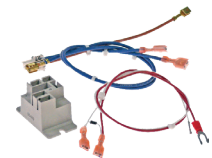
TURBOCHEF NGC-1163



LF Code: 5158505  
GEV Code: PT00010506

## INSULATION FOR HEATING ELEMENT

TURBOCHEF NGC-3012



LF Code: 5183416  
GEV Code: PT00007939

## KIT SERVICE STANDARD FOR FAN

TURBOCHEF NGC-3030-1



LF Code: 5183275  
GEV Code: PT00007615

## SERVICE KIT

TURBOCHEF ENC-3008



LF Code: 5183293  
GEV Code: PT00007902

## SERVICE KIT

TURBOCHEF I1-3212



LF Code: 5158532  
GEV Code: PT00007896

## SILICONE GREASE 20 ml

TURBOCHEF 100639, NGC-3006



LF Code: 5158524  
GEV Code: PT00009875

## DOOR HANDLE

fixing hole distance 305 mm

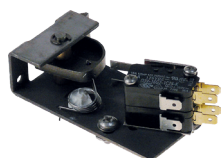
TURBOCHEF 102750



LF Code: 5158522  
GEV Code: PT00007867

## DOOR HANDLE SPRING

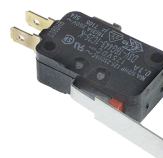
TURBOCHEF NGC-1087



LF Code: 5155068  
GEV Code: PT00007619

## MICROSWITCH KIT

TURBOCHEF ENC-3050



LF Code: 5183284  
GEV Code: PT00007750

## LIMIT SWITCH 250 V 16 A

TURBOCHEF I1-3207



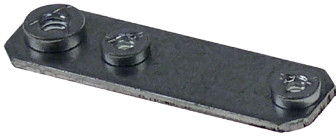
LF Code: 5158431  
GEV Code: PT00007266

## MICROSWITCH OMRON D3V

type D3V-16G443-1C25-K  
16A 250V - 1 CO

TURBOCHEF 102012

# TurboChef



LF Code: 5183343  
GEV Code: PT00010458

## MICROSWITCH SUPPORT

TURBOCHEF NGC-1126



LF Code: 5158521  
GEV Code: PT00007188

## NUT WITH TOOTHED WASHER 8/32" UNC

height 4 mm - STAINLESS STEEL

TURBOCHEF 102962



LF Code: 5158514  
GEV Code: PT00009862

## ELASTIC SPIRAL WASHER $\varnothing$ 5 mm

$\varnothing$  internal/external 5/8.3 mm

TURBOCHEF 102350



LF Code: 5158529  
GEV Code: PT00009874

## WIDE PAN HEAD SCREW 8/32" UNC

length 9.3 mm - stainless steel with torx security

TURBOCHEF 102748



LF Code: 5158520  
GEV Code: PT00007322

## FLAT COUNTERSUNK SCREW 8/32" UNC

cross cut - stainless steel  
length 9.3 mm  
diameter 7.5 mm

TURBOCHEF 102809



LF Code: 7154883  
GEV Code: PT00007506

## SELF TAPPING SCREW $\varnothing$ 4.2x13 mm

stainless steel - cylindrical head  
torx safety container

TURBOCHEF 102752



LF Code: 5182956  
GEV Code: PT00009794

## TERMINAL

TURBOCHEF 100134



LF Code: 5183424  
GEV Code: PT00007918

## FAN MOTOR WITH CONNECTOR 230V

TURBOCHEF TC3-0433



LF Code: 5158517  
GEV Code: PT00007706

## PIN

TURBOCHEF 101972



LF Code: 5182987  
GEV Code: PT00007439

## ADJUSTABLE FOOT 1 1/4" NPT

thread size 3/8" NPT  
height 102-140 mm

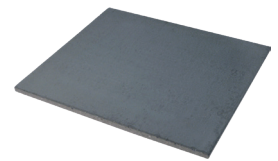
TURBOCHEF 100781



LF Code: 5183282  
GEV Code: PT00007670

## CERAMIC PLATE 373x356 mm

TURBOCHEF ENC-3012



LF Code: 5183419  
GEV Code: PT00007991

## REFRACTORY

TURBOCHEF NGC-3063

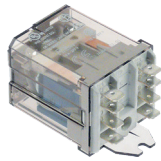
# TurboChef



LF Code: 5183000  
GEV Code: PT00007290

## RELAY 30A

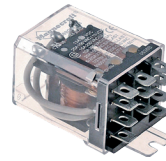
TURBOCHEF 101279



LF Code: 5182996  
GEV Code: PT00007186

## POWER RELAY 2-POLE

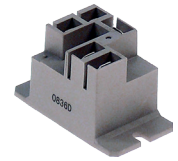
TURBOCHEF 101273



LF Code: 5182994  
GEV Code: PT00007492

## POWER RELAY 24VDC 16A 3CO

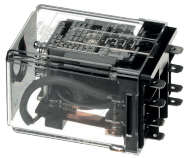
TURBOCHEF 101272



LF Code: 5158447  
GEV Code: PT00007705

## POWER RELAY 24VDC 20A

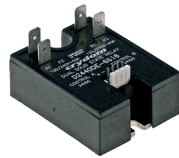
TURBOCHEF 101274



LF Code: 5183029  
GEV Code: PT00007844

## PCB RELAY

TURBOCHEF 105160



LF Code: 5183001  
GEV Code: PT00007852

## STATIC RELAY 40A 240V

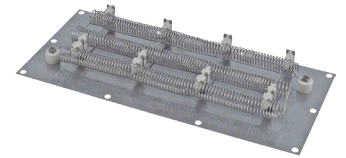
TURBOCHEF 101286



LF Code: 5183379  
GEV Code: PT00007890

## HEATING ELEMENT 3000W 208V

TURBOCHEF NGC-3003



LF Code: 5158502  
GEV Code: PT00007927

## HEATING ELEMENT 3300W 208V

dimensions 320x147 mm  
height 30 mm

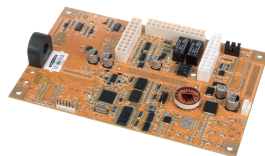
TURBOCHEF 100661, NGC-3011



LF Code: 5183273  
GEV Code: PT00007618

## HEATING ELEMENT LOWER

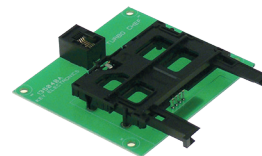
TURBOCHEF ENC-3002



LF Code: 5183047  
GEV Code: PT00007421

## ELECTRONIC BOARD KIT

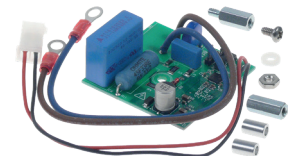
TURBOCHEF CON-3019



LF Code: 5182961  
GEV Code: PT00007289

## MAGNETIC CARD READER

TURBOCHEF 100506



LF Code: 5183048  
GEV Code: PT00007261

## VOLTAGE DETECTOR NGC 60Hz

TURBOCHEF CON-3027

# TurboChef



LF Code: 5158496  
GEV Code: PT00007898

## POWER SUPPLY BOARD

TURBOCHEF 101211, NGC-3069



LF Code: 5184315  
GEV Code: PT00009839

## STOP RING $\varnothing$ 19 mm DIN 471

TURBOCHEF 101312



LF Code: 5183254  
GEV Code: PT00007634

## LATCH LOCK 29x33x15 mm

TURBOCHEF ENC-1693



LF Code: 5158527  
GEV Code: PT00007899

## BULB FIXING CLIP $\varnothing$ 4 mm

length 25 mm  
width 11 mm  
fixing distance 18 mm

TURBOCHEF T0337



LF Code: 5165755  
GEV Code: PT00007731

## PROBE WITH CABLE $\varnothing$ 5mm

TURBOCHEF HHC-6595



LF Code: 5183030  
GEV Code: PT00009976

## TEMPERATURE PROBE TCK

TURBOCHEF 700-1199



LF Code: 5158432  
GEV Code: PT00010533

## ALARM FOR OVEN

2-hole fixing -  $\varnothing$  31.75 mm  
height 9.5 mm

TURBOCHEF NGC-3083



LF Code: 5183252  
GEV Code: PT00007704

## LOCKING BRACKET

TURBOCHEF ENC-1655



LF Code: 5158530  
GEV Code: PT00007363

## BLIND CAP

TURBOCHEF 101191



LF Code: 5183307  
GEV Code: PT00007859

## MEMBRANE 634x85 mm

TURBOCHEF I5-9247.C



LF Code: 5183342  
GEV Code: PT00010456

## PUSH-BUTTON MEMBRANE 295x98 mm

TURBOCHEF NGC-1110-3



LF Code: 5183363  
GEV Code: PT00007954

## PUSH-BUTTON MEMBRANE TORNADO 2

TURBOCHEF NGC-1495-1

# TurboChef



LF Code: 5158528  
GEV Code: PT00007832

---

**LOWER FRONT PANEL**

---

TURBOCHEF NGC-1071, NGC-1071-2



LF Code: 5183344  
GEV Code: PT00007870

---

**THERMOCOUPLE**

---

TURBOCHEF NGC-1140



LF Code: 5183021  
GEV Code: PT00007386

---

**THERMOSTAT 300°C**

---

TURBOCHEF 102075



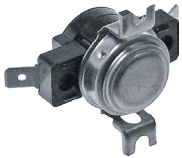
LF Code: 5183028  
GEV Code: PT00007345

---

**CONTACT THERMOSTAT**

---

TURBOCHEF 105108



LF Code: 5158474  
GEV Code: PT00007385

---

**CONTACT THERMOSTAT 100°C**

---

1NC 16A 250V

TURBOCHEF 102070



LF Code: 5158487  
GEV Code: PT00007321

---

**CONTACT THERMOSTAT 49°C**

---

1 NO - 16 A

TURBOCHEF 102086



LF Code: 5182955  
GEV Code: PT00007344

---

**CONTACT THERMOSTAT FOR MAGNETRON**

---

TURBOCHEF 104228



LF Code: 7124358  
GEV Code: PT00007935

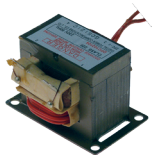
---

**HIGH-VOLTAGE TRANSFORMER**

---

type DPC102103  
primary voltage 230V 50/60Hz  
secondary voltage 2000 kV

TURBOCHEF NGC-3062-1



LF Code: 5158500  
GEV Code: PT00007925

---

**WIRING TRANSFORMER 230V 50Hz**

---

type DPC102104

TURBOCHEF 102104, NGC-3061-2

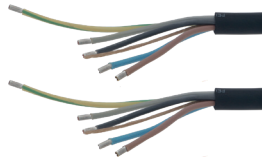
# Unox



LF Code: 7160026  
GEV Code: LF7160026

## CABLE MICROFIT 4P-500mm

UNOX KCE1065A



LF Code: 7160027  
GEV Code: LF7160027

## CABLE KIT 1500 mm

poles - cable cross-section 2.5 mm<sup>2</sup>

UNOX KCE1355A



LF Code: 7160028  
GEV Code: LF7160028

## CABLE KIT AWG16 SILICABLE HT

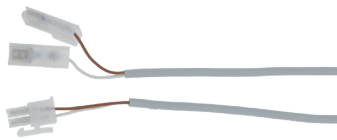
UNOX KCE2005A



LF Code: 7160030  
GEV Code: LF7160030

## CABLE KIT MICROFIT 4PM-PF 1100 mm

UNOX KCE2025A



LF Code: 7160029  
GEV Code: LF7160029

## CABLE KIT MINIFIT 2PM 1100 mm

UNOX KCE2009A



LF Code: 7160033  
GEV Code: LF7160033

## HINGE RH KIT COMPLETE SPEED PRO

UNOX KCR1131A



LF Code: 7160032  
GEV Code: LF7160032

## DOOR HINGE LH KIT SPEED PRO

UNOX KCR1130A



LF Code: 7160050  
GEV Code: LF7160050

## HINGE-BEARING KIT SPEED PRO

UNOX KVP1077A



LF Code: 7160031  
GEV Code: LF7160031

## CAPACITOR KIT 0.85µF HT 2500V

UNOX KCN1015A



LF Code: 5144231  
GEV Code: LF5144231

## CAPACITOR KIT 3.5µF

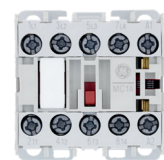
UNOX KCN1010A, KVE1145A, VE1145A, VE1145A0



LF Code: 7119165  
GEV Code: 365219

## MOTOR CAPACITOR KIT 6.3 µF

UNOX KCN1003A, VE1110A0



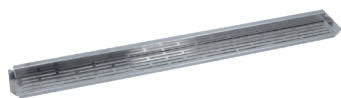
LF Code: 5145247  
GEV Code: LF5145247

## CONTACTOR GENERAL ELECTRIC MC1A400AT6

4kW 400V 9A - coil 220/230V 50/60Hz  
4 NO contacts with fixing clip

UNOX KVE1115A, VE1115A0





LF Code: 7160025  
GEV Code: LF7160025

### FRONT AIR FILTER KIT SPEED PRO

UNOX K0H5285A



LF Code: 7160049  
GEV Code: LF7160049

### AIR OUTLET GRILL KIT SPEED PRO

UNOX KVP1049A



LF Code: 7160044  
GEV Code: LF7160044

### FUSE 16A EXTRA-RAPID

UNOX KVE1686A, KVE1686B



LF Code: 5175049  
GEV Code: LF5175049

### DOOR GASKET 545x340 mm

in silicone elastomer  
profile dimensions 17x16 mm  
COLOUR BLACK

UNOX KGN1432B



LF Code: 5144451  
GEV Code: LF5144451

### GASKET KIT 460x330 mm - 2Pcs

UNOX KVM2490A



LF Code: 5144452  
GEV Code: LF5144452

### SIDE GASKET KIT 460x330 mm - 2Pcs

UNOX KVM2491A



LF Code: 7160041  
GEV Code: LF7160041

### MAGNETRON 1080W SPEED PRO

UNOX KVE1800A



LF Code: 5144444  
GEV Code: LF5144444

### HANDLE TERMINAL KIT BAKERLUX SP - 2Pcs

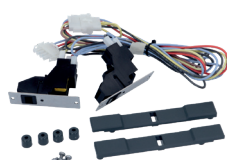
UNOX KVM2456A



LF Code: 7160040  
GEV Code: LF7160040

### FLAP HANDLE PIPE KIT SPEED PRO

UNOX KTB2843A



LF Code: 7160043  
GEV Code: LF7160043

### MICRODOOR KIT MW - 2Pcs

UNOX KVE1820A



LF Code: 7160024  
GEV Code: LF7160024

### DOOR SWITCH HOOK KIT - 2Pcs

UNOX K0H5272A



LF Code: 5145264  
GEV Code: LF5145264

### MICROSWITCH KIT PIZZATO MKH11D09

5A 250V

UNOX KVE1295A, VE086B

# Unox



LF Code: 7160036  
GEV Code: LF7160036

## HINGE SPRING KIT SPEED PRO - 2Pcs

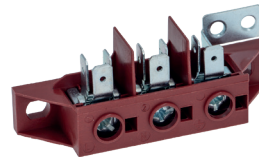
UNOX KML1019A



LF Code: 5175034  
GEV Code: LF5175034

## DOOR SPRING KIT SPEED PRO - 2Pcs

UNOX KML1018B



LF Code: 5144320  
GEV Code: LF5144320

## TERMINAL BLOCK KIT 3-POLES

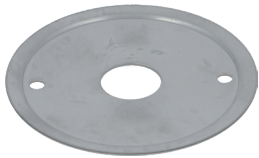
UNOX CE1575A0, KMR1025A



LF Code: 5144319  
GEV Code: LF5144319

## TERMINAL BLOCK KIT 7-POLES 450V 40A

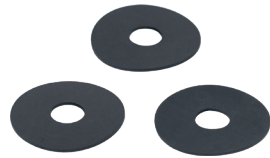
UNOX KMR1004A



LF Code: 5146808  
GEV Code: 551280

## MOTOR SHAFT SEALING DISC

UNOX 0H3020A1



LF Code: 5175031  
GEV Code: LF5175031

## MOTOR SHAFT SEAL KIT - 3Pcs

external  $\varnothing$  40 mm  
internal  $\varnothing$  12 mm

UNOX KGN1547A



LF Code: 5144323  
GEV Code: 499399

## MOTOR KIT SISME

0.33 kW 230V  
shaft length 65 mm  
shaft  $\varnothing$  12 mm  
fixing thread M6S F  
complete with flange, gasket  
and screw

UNOX KMT1012A



LF Code: 5104042  
GEV Code: 602291

## KIT AXIAL FAN EBM 4656N

230V 50Hz 19W 2650rpm  
119x119x38 mm - ball bearing  
complete with mask and screws

UNOX KVN1165A



LF Code: 5144460  
GEV Code: LF5144460

## AXIAL FAN PELKO 40x40x20 mm

12Vdc 0,22A  
C4020Y12BPLP1c-5

UNOX KVN1179A



LF Code: 7160035  
GEV Code: LF7160035

## LED BAR KIT SPEED PRO

UNOX KLP1055A



LF Code: 7160034  
GEV Code: LF7160034

## DOOR COMPLETE SPEED.Pro

UNOX KDR1370A



LF Code: 7160042  
GEV Code: LF7160042

## DIODE KIT HV 16kV 750mA SPEED PRO

UNOX KVE1810A



LF Code: 7160039  
GEV Code: LF7160039

### HEATING ELEMENT KIT 2x1600W SPEED.Pro

external  $\varnothing$  230 mm  
internal  $\varnothing$  215 mm  
bracket 140x25 mm  
complete with bracket and gasket

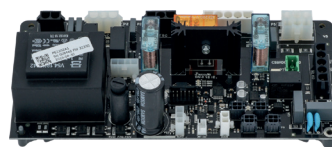
UNOX KRS1018A



LF Code: 7160038  
GEV Code: LF7160038

### CONTROL BOARD KIT SPEED PRO

UNOX KPE2153A

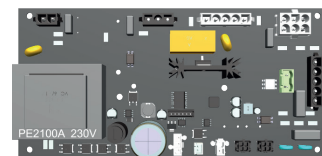


LF Code: 5144344  
GEV Code: LF5144344

### POWER BOARD KIT 230V 210x100 mm

for line BAKERLUX LED/  
TOUCH/MASTER

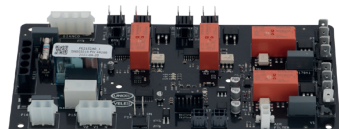
UNOX KPE2102A



LF Code: 5144343  
GEV Code: LF5144343

### POWER BOARD KIT BAKERLUX SP Go 230V

UNOX KPE2100A



LF Code: 7160037  
GEV Code: LF7160037

### POWER BOARD KIT MW MAGNETRON

UNOX KPE2152A



LF Code: 5066877  
GEV Code: 378374

### TEMPERATURE PROBE KIT PT100

complete with glue and plate  
2 threads - connector fitting  
bulb  $\varnothing$  4x30 mm  
bracket 20x12 mm  
cable length 1000 mm

UNOX KTR1105A, TR1105A0



LF Code: 7160048  
GEV Code: LF7160048

### LOWER DOOR CAP KIT RH SPEED PRO

UNOX KVP1025A



LF Code: 7160047  
GEV Code: LF7160047

### LOWER DOOR CAP KIT LH SPEED PRO

UNOX KVP1024A



LF Code: 5144382  
GEV Code: 376080

### THERMOSTAT SINGLE-PHASE KIT 318°C

with manual reset  
capillary coated length 1260  
mm - 16A 250V  
bulb  $\varnothing$  3x137 mm  
complete with bracket and  
adhesive

UNOX KTR1136A



LF Code: 5175038  
GEV Code: LF5175038

### CONTACT THERMOSTAT KIT 100°C SPEED.PRO

UNOX KTR1164A



LF Code: 5175054  
GEV Code: LF5175054

### TRANSFORMER KIT HV 1000VA MW

UNOX KVE1805B

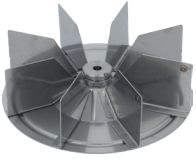


LF Code: 7160046  
GEV Code: LF7160046

### COOLING FAN KIT SPEED PRO

UNOX KVN1182A

# Unox



LF Code: 7160045  
GEV Code: LF7160045

---

## **FAN KIT ø 195 mm**

thickness 60 mm  
8 blades - hole ø 8 mm

UNOX KVN1171A



LF Code: 5059427  
GEV Code: 701411

---

## **LOCK FOR INTERNAL LOWER GLASS**

UNOX KVM1236A, VM1236A0



**REPA Deutschland GmbH**

Gadastr. 4  
85232 Bergkirchen  
info.ger@repagroup.com  
[www.gev-online.com](http://www.gev-online.com)

**REPA Italia s.r.l. a socio unico**

Via Voltri 80  
47522 Cesena FC  
info.it@repagroup.com  
[www.lfspareparts724.com](http://www.lfspareparts724.com)

**REPA France S.A.S.**

13 Rue des Forts  
59960 Neuville en Ferrain  
france@repagroup.com  
[www.epgc.com](http://www.epgc.com)

**REPA Iberia, S.L.U.**

Energía, 39-41 – PI Famadas  
08940 Cornellá (Barcelona)  
info.es@repagroup.com  
[www.gev-online.com](http://www.gev-online.com)

**REPA Nederland B.V.**

Jac. P. Thijsseweg 1H  
2408 ER Alphen aan den Rijn  
info.nl@repagroup.com  
[www.gev-online.com](http://www.gev-online.com)

**REPA Austria GmbH**

Austraße 12  
5110 Oberndorf bei Salzburg  
office@repa.at  
[www.repa.at](http://www.repa.at)

**REPA (China) Co.Ltd**

Rm 210, No.2 Bd, 3601 Dongfang Rd  
200125 Shanghai  
info.cn@repagroup.com  
[www.gev-online.com](http://www.gev-online.com)

**REPA Swiss GmbH**

Junkerbifangstrasse 18  
4800 Zofingen  
info.ch@repagroup.com  
[www.gev-online.com](http://www.gev-online.com)