

TOP SELLERS BAKERY

Selection of spare parts



TOP SELLERS BAKERY

DIGITAL CONTROLLERS



1



2



3



4



5



6

Photo	LF Code	GEV Code	Description	Notes
1	3445147	378170	Evco EV7402M6, 1 TC(J/K)/Pt100/Pt1000/mA/V	24/230 V, 2 CO, 68 x 68 mm, -99 to +1200°C
1	3445141	LF3445141	Evco EV7401J7, 1 TC(J/K), 230 V	1 CO, 68 x 68 mm, -99 to +1200°C
2	5082379	LF5082379	Evco EV9411J6, 1 TC(J/K), 24/230 V	1 CO, 92 x 92 mm, -99 to +800°C, buzzer
3	3446087	LF3446087	Evco EV9303J9, 1 TC(J/K) + 1 DI, 115-230V	1 CO + 2 NO ; 92 x 92 mm, -99 to +1200°C, timer + buzzer
4	7188853	LF7188853	Evco RK808LJ7C, 2 TC(J/K), 230V	2 CO + 3 NO, 92 x 92 mm, -99 to +800°C, timer + buzzer
5	5127633	378789	Evco EV8318J9, 3 TC(J/K)/Pt100/Pt1000/mA/V/DI + 1 DI	115-230 V, 1 CO + 7 NO, 138 x 67 mm, 0 to +999°C, timer
6	5044042	LF5044042	Eurofours RUNI, 2 TC(J), 230V	1 CO, 92 x 92 mm, 0 to +280°C, timer

REGULATION PROBES



1



2



3



4



5



6

Photo	LF Code	GEV Code	Description	Notes
1	3397164	LF3397164	PTC probe 1500 mm	silicone cable, bulb \varnothing 6 x 40 mm, -55 to +150°C
2	3445913	379458	NTC probe 1500 mm	silicone cable, bulb \varnothing 6 x 40 mm, -50 to +110°C
3	7151739	LF7151739	TC(J) probe 3000 mm	vetrotex cable, bulb \varnothing 4 x 20 mm, 0 to +600°C
4	7106329	LF7106329	Pt1000 probe 3000 mm	vetrotex cable, 3 wires, bulb \varnothing 4 x 50 mm, -50 to +400°C
4	7151720	LF7151720	Pt100 probe 2000 mm	vetrotex cable, 3 wires, bulb \varnothing 6 x 50 mm, 0 to +400°C
5	2102803	378076	humidity probe EVHP503 1500 mm	Evco, 8-28 Vdc, \varnothing 20 x 185 mm, 5 to 95 %RH
6	3440001	LF3440001	universal thermocouple 900 mm	12 pieces set

TIMERS



1



2



3



4



5



6

Photo	LF Code	GEV Code	Description	Notes
1	7108752	LF7108752	digital timer EVK712D7, 230 V, 99,59h	Evco, 2 CO, 71 x 29 mm
2	3445151	LF3445151	digital timer EV7702D7, 230 V, 99,59h	Evco, 2 CO, 68 x 68 mm
2	7133087	LF7133087	digital timer EC7103D024, 24 V, 99,59h	Evco, 2 CO, 68 x 68 mm
3	2102607	LF2102607	digital timer EV7003X7, 230 V, 99,59h	Evco, 3 CO, 68 x 68 mm
4	3446181	LF3446181	digital timer 694TF, 230 V, 99,59h	MCI, 2 CO, 68 x 68 mm
5	3446157	350093	mechanical timer MI2, 30 min	MCI, 2 CO, 50 x 58 mm
6	3446159	350095	mechanical timer MI2, 120 min	MCI, 2 CO, 50 x 58 mm

THERMOSTATS



1



2



3



4



5

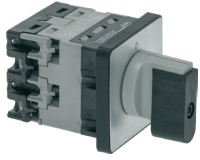


6

Photo	LF Code	GEV Code	Description	Notes
1	5093046	LF5093046	single phase thermostat, 50 to +300°C	16 A, 250 V, capillary 1000 mm, bulb ø 3 x 153 mm
2	3444561	375038	three phase thermostat, 50 to +300°C	16 A, 380 V, capillary 1740 mm, bulb ø 6 x 80 mm
3	3444441	110123	black knob 50-300°C	ø 50 mm
4	3444305	375247	single phase thermostat, 50 to +500°C	16 A, 250 V, capillary 900 mm, bulb ø 4 x 230 mm
5	3444714	375132	three phase thermostat, 50 to +500°C	16 A, 380 V, capillary 1200 mm, bulb ø 4 x 228 mm
6	3444187	111533	black knob 50-500°C	ø 50 mm

TOP SELLERS BAKERY

LEGRAND / BACO SELECTOR SWITCHES



1



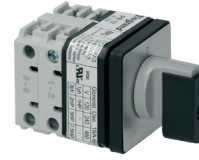
2



3



4



5



6

Photo	LF Code	GEV Code	Description	Notes
1	3057259	LF3057259	3 phases, 0 / 1	PR12 1103 A4, 42 x 40 mm
2	3057260	LF3057260	4 phases, 0 / 1	PR12 1104 A4, 42 x 40 mm
3	5142455	LF5142455	1 phase, S1 / 0 / S2	PR12 2203 C8, 42 x 40 mm
4	3057261	LF3057261	3 phases, RW / 0 / FW	PR12 9151 C8, 42 x 40 mm
5	3057263	LF3057263	4 phases, 0 / 1	PR17 1104 A4, 50 x 48 mm
6	5142453	LF5142453	3 phases, 0 / S1 / S2	PR17 9552, 50 x 48 mm

SCHNEIDER MODULAR BUTTONS



1



2



3



4



5



6

Photo	LF Code	GEV Code	Description	Notes
1	7159716	LF7159716	green lighting push button	ZB4BH033
2	7159720	LF7159720	white lighting push button	ZB4BH013
3	7159713	LF7159713	2 position turning button	ZB4BD2
4	7159712	LF7159712	3 position turning button	ZB4BD3
5	7111678	LF7111678	3 position turning button (center recall)	ZB4BD5
6	5025082	348253	mushroom red push button	ZB4BS844



1



2



3



4



5



6

Photo	LF Code	GEV Code	Description	Notes
1	7159734	LF7159734	double "0/1" push button	ZB4BW7A3741
2	7159719	LF7159719	fixing base	ZB4BZ009
3	3454077	347385	NO contact module (10 A)	ZBE101
4	7102367	347600	NC contact module (10 A)	ZBE102
5	7159711	LF7159711	led module (230 V)	ZBVM1
6	7159722	LF7159722	water proof transparent cap	ZBP0

MICROSWITCHES



Photo	LF Code	GEV Code	Description	Notes
1	3240407	348043	microswitch kit, 16 A, 250 V	1 CO, actuation force 100 g, 6 levers included
2	1240283	345042	microswitch EF83161.3, 16 A, 250 V	Crouzet, 1 CO, actuation force 0,2 to 0,8 N
3	3240410	345032	microswitch, 16 A, 230 V	1 CO, M10 x 0,75 mm
4	1240120	348145	microswitch, 16 A, 230 V	Pizzato MKV11D15
5	3803112	348261	limit switch FR502, 3 A, 250 V	Pizzato, 1 NO / 1 NC
6	3240155	345144	limit switch FR530-A, 4 A, 250 V	Pizzato, 1 NO / 1 NC

PLUGS & SOCKETS



Photo	LF Code	GEV Code	Description	Notes
1	7160308	LF7160308	plug 3P+E+N, 32 A	Plexo, 400 V
2	5113382	550267	plug 3P+E+N, 16 A	400 V, IP44, CE
2	7155379	550523	plug 3P+E+N, 32 A	400 V, IP44, CE
3	7160299	LF7160299	socket 3P+E+N, 32 A	Plexo, 400 V, IP55
4	5113720	550264	socket 3P+E+N, 16 A	400 V, IP44, CE
4	7159677	551179	socket 3P+E+N, 32 A	400 V, IP44, CE

TOP SELLERS BAKERY

MOTORS

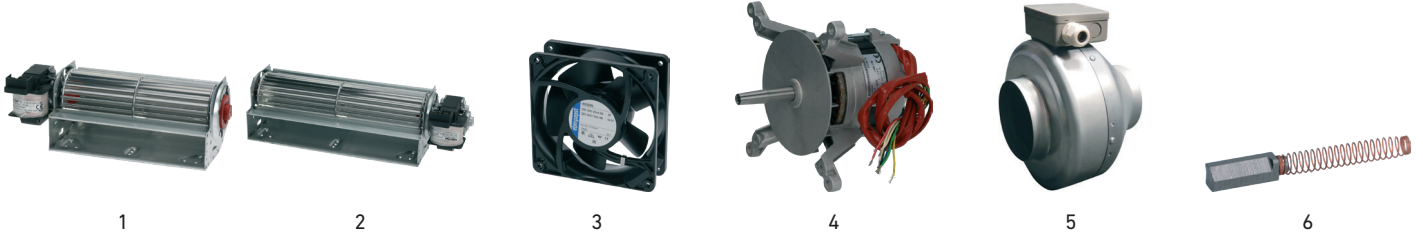


Photo	LF Code	GEV Code	Description	Notes
1	3526150	602284	tangential fan 180 mm LH, 25 W, 230 V	ø 60 mm, -30 to +100°C
1	3526154	601057	tangential fan 270 mm LH, 26 W, 230 V	ø 60 mm, -30 to +100°C
2	3526963	601798	tangential fan 240 mm RH, 25 W, 230 V	ø 60 mm, -30 to +100°C
3	1240390	601089	axial fan 4650N, 19 W, 230 V	EBM Paspt, 119 x 119 x 38 mm, 2650 rpm
4	2102487	LF2102487	convection fan motor 1079T4410, 250 W, 220/380/415 V	Fir, shaft ø 17 x 70 mm, suitable to Salva
5	7159826	LF7159826	duct fan AX125BC, 52 W, 230 V	Atlantic, ø 125 mm, 2640 rpm, 315 m³/h
5	7159827	LF7159827	duct fan AX160BC, 113 W, 230 V	Atlantic, ø 160 mm, 2650 rpm, 500 m³/h
5	7159828	LF7159828	duct fan AX200BC, 105 W, 230 V	Atlantic, ø 200 mm, 2700 rpm, 880 m³/h
6	9240014	696409	motor spring carbon brushes	suitable to Kitchenaid

HEATING ELEMENTS

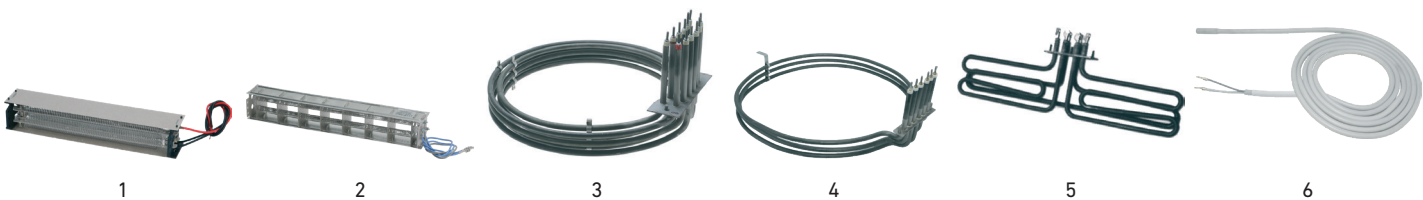


Photo	LF Code	GEV Code	Description	Notes
1	2102796	LF2102796	tangential fan heating element 2000 W, 230 V	suitable to tangential fan 180 mm
2	3355378	LF3355378	tangential fan heating element 2000 W, 230 V	suitable to tangential fan 270 mm
3	5044041	LF5044041	circular heating element 9450 W, 230/400 V	suitable to Eurofours
4	5137841	LF5137841	circular heating element 7200 W, 230 V	suitable to Salva
5	3355744	415834	hairpin heating element 4000 W, 230 V	suitable to Wiesheu
6	3855100	LF3855100	heating cord 1500 mm, 230 V	suitable to Panimatic

LAMPS



Photo	LF Code	GEV Code	Description	Notes
1	3221061	357153	E14, 25 W, 230 V	ø 26 x 57 mm, +300°C
2	3221140	359611	E14, 40 W, 230 V	ø 45 x 78 mm, +300°C
3	5112766	357103	E27, 40 W, 230 V	ø 45 x 72 mm, +500°C
4	3421022	359596	G4, 10 W, 12 V	halogen, +500°C
4	5103990	359599	G4, 20 W, 12 V	halogen, +500°C
5	3421014	357195	G9, 25 W, 230 V	halogen, +300°C
6	2101515	360625	GU5.3, 35 W, 12 V	halogen with glass, ø 51 mm

LEDS

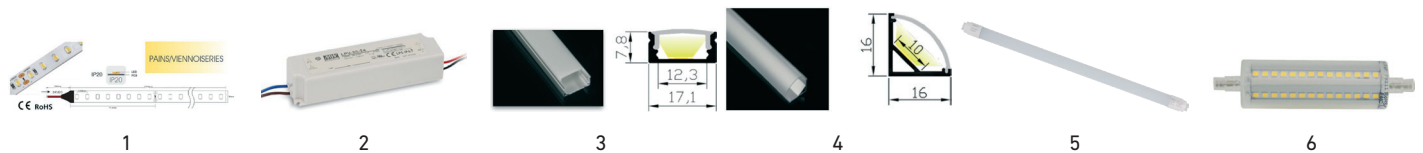


Photo	LF Code	GEV Code	Description	Notes
1	7160344	LF7160344	food led strip, 10 W/m, 24 V	5 m, IP20, 2500°K bakery yellow light, 1360 Lm
2	7160342	LF7160342	led strip supply, 35 W, 24 V	IP67, suitable to 3 m led strip
2	7160343	LF7160343	led strip supply, 60 W, 24 V	IP67, suitable to 5 m led strip
3	7160340	LF7160340	led strip straight diffuser	aluminium, 2000 mm
4	7160341	LF7160341	led strip angle diffuser	aluminium, 2000 mm
5	3421028	LF3421028	T8 led tube, 230 V	1200 mm, wight light
6	7160338	LF7160338	R7S, 14 W, 230 V	118 mm, 4000°K white light, 1440 Lm

TOP SELLERS BAKERY

UV LAMPS



Photo	LF Code	GEV Code	Description	Notes
1	3223013	LF3223013	E14, 20 W, 230 V	UV-A, insect killer
2	3223015	LF3223015	E27, 15 W, 230 V	UV-C, knife cabinet
3	3223011	LF3223011	E27, 20 W, 230 V	UV-A, insect killer
4	7119423	LF7119423	G13 T8 tube, 10 W, 230 V	UV-A, 330 mm, insect killer
5	3223018	LF3223018	G13 T8 tube, 15 W, 230 V	UV-A, 430 mm, insect killer
6	5025181	LF5025181	G13 T8 tube, 15 W, 230 V	UV-C, 430 mm, knife cabinet

CUENOD BURNER PARTS

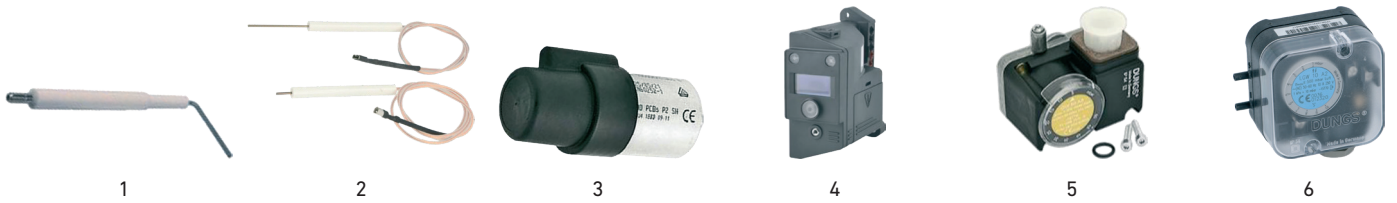


Photo	LF Code	GEV Code	Description	Notes
1	3806046	LF3806046	ionisation probe	FC6, FC9 (before 08/09), FC12, FC16
2	3806044	LF3806044	probe + electrode + cable kit	FC10G, FC14G
3	3068169	LF3068169	motor capacitor 2 μ F, 400 V	FC10G, FC14G
4	3154007	LF3154007	gas safety control box TCG 161.07	FC6G, FC9G (before 08/09)
5	3320265	LF3320265	pressure switch Dungs GW10A5-1	FC9 (before 08/09), FC12, FC16, 2-10 mbar
6	3320268	LF3320268	pressure switch Dungs LGW10A2	FC10G, FC14G, 1-10 mbar

RIELLO BURNER PARTS



Photo	LF Code	GEV Code	Description	Notes
1	5142489	LF5142489	ignition electrode	FS10
2	5142490	LF5142490	ionisation electrode	FS8, FS10
3	3023359	LF3023359	ignition wire kit	5 pieces
4	3023360	LF3023360	ionisation wire kit	5 pieces
5	3023358	LF3023358	control unit RM088.53C2	Landis
6	3023357	LF3023357	control unit 530SE	-

GAS PARTS



Photo	LF Code	GEV Code	Description	Notes
1	5112731	250019	gas flexible hose 1000 mm	FF 1/2" connections, DN15, 2 bars
1	5129855	250021	gas flexible hose 1500 mm	FF 1/2" connections, DN15, 2 bars
1	5129857	250022	gas flexible hose 2000 mm	FF 1/2" connections, DN15, 2 bars
2	5129860	250025	gas flexible hose 1000 mm	FF 3/4" connections, DN20, 2 bars
2	5129858	250026	gas flexible hose 1500 mm	FF 3/4" connections, DN20, 2 bars
2	5129866	250027	gas flexible hose 2000 mm	FF 3/4" connections, DN20, 2 bars
3	7117143	250122	turning connection set 3/4"	FF + MM connections
4	5112735	250097	gas bottle fitting set	1/2", M20 x 1,5 mm connections
5	3526601	520286	gas ballcock valve 1/2"	FF connections, DIN, DVGW
5	3526602	520287	gas ballcock valve 3/4"	FF connections, DIN, DVGW
6	7154843	LF7154843	gas solenoid valve NC, 230 V	FF 1/2" connections, 600 mbar
6	7154844	LF7154844	gas solenoid valve NC, 230 V	FF 3/4" connections, 600 mbar

TOP SELLERS BAKERY

WATER PARTS



1



2



3



4



5



6

Photo	LF Code	GEV Code	Description	Notes
1	3120405	370017	1 way solenoid valve 180°	230V, inlet 3/4", outlet ø 10,5 mm
1	3120409	370018	1 way solenoid valve 180°	230V, inlet 3/4", outlet ø 13,5 mm
2	3120404	370015	1 way solenoid valve 90°	230V, inlet 3/4", outlet ø 10,5 mm
2	3120408	370016	1 way solenoid valve 90°	230V, inlet 3/4", outlet ø 13,5 mm
3	3120407	370021	2 ways solenoid valve 180°	230V, inlet 3/4", outlets ø 10,5 mm
4	3120406	370019	2 ways solenoid valve 90°	230V, inlet 3/4", outlets ø 10,5 mm
5	1120158	LF1120158	NC solenoid valve ODE 8W	230V, FF 1/2" connections, 90°C : 20 bars
6	3120110	370322	steam solenoid valve L145R2	230V, FF 1/2" connections, 175°C : 12 bars



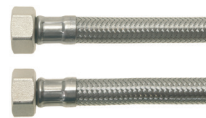
1



2



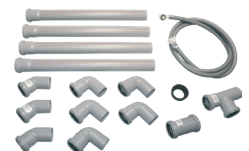
3



4



5



6

Photo	LF Code	GEV Code	Description	Notes
1	7101241	LF7101241	agitator motor with propeller N7.30.679	230 V, 7 W, shaft 250 mm, propeller ø 45 mm
2	7155661	LF7155661	cold water meter Aquarius V3 R80 TGP	3/4" connections, 2,5 m³/h
2	7155668	LF7155668	cold water meter Aries R125 TGPI	1" connections, 4 m³/h
3	7155657	LF7155657	izar dosing totalizer	5 digits, suitable to Aquarius & Aries meters
4	3449030	LF3449030	stainless steel flex hose 1500 mm	FF 1/2" connections, WRAS, 90°C : 20 bars
5	3449209	LF3449209	stainless steel flex hose 1000 mm	FF 1/2" connections, WRAS, 70°C : 10 bars
5	3449034	521292	stainless steel flex hose 1500 mm	FF 3/4" connections, WRAS, 90°C : 20 bars
5	3449035	520628	stainless steel flex hose 2000 mm	FF 3/4" connections, WRAS, 90°C : 20 bars
6	7119527	LF7119527	hot water fitting kit ø 40 mm	drain hoses, elbows, T-fitting, supply hose, gasket
6	7115242	515166	hot water fitting kit ø 50 mm	drain hoses, elbows, T-fitting, supply hose, gasket

BRITA WATER FILTRATION



1



2



3



4



5



6

Photo	LF Code	GEV Code	Description	Notes
1	7151293	LF7151293	cartridge Purity C 500 Steam	capacity 4 675 l, flow rate 100 l/h
2	7151294	LF7151294	cartridge Purity C 1100 Steam	capacity 7 907 l, flow rate 100 l/h
3	7151295	LF7151295	filter head Purity C Steam	3/8" connections, flow rate 100 l/h
4	5107931	530858	system Purity 450 Steam	capacity 3 680 l, flow rate 120 l/h
4	3010218	530860	system Purity 600 Steam	capacity 5 771 l, flow rate 120 l/h
4	3010219	530861	system Purity 1200 Steam	capacity 10 800 l, flow rate 120 l/h
5	7112061	530867	spare cartridge Purity 450 Steam	capacity 3 680 l, flow rate 120 l/h
5	3010257	530868	spare cartridge Purity 600 Steam	capacity 5 771 l, flow rate 120 l/h
5	3010258	530869	spare cartridge Purity 1200 Steam	capacity 10 800 l, flow rate 120 l/h
6	3010621	800031	water hardness testing kit	°KH, ≈ 50 tests

BWT WATER + MORE WATER FILTRATION



1



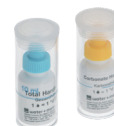
2



3



4



5

Photo	LF Code	GEV Code	Description	Notes
1	3010707	530076	cartridge Bestmax XL	capacity 6 800 l, flow rate 60 l/h
1	7150446	530173	cartridge Bestmax 2XL	capacity 12 000 l, flow rate 60 l/h
2	2103995	LF2103995	cartridge Bestprotect XL	capacity 6 800 l, flow rate 60 l/h
2	2103996	LF2103996	cartridge Bestprotect 2XL	capacity 12 000 l, flow rate 60 l/h
3	3010700	530070	filter head for Bestmax or Bestprotect	3/8" connections, flow rate 60 l/h
4	3010701	530090	vacuum tap Bestflush	3/8" connections
5	5109673	800034	water hardness testing kit	°GH + °KH, ≈ 50 tests

TOP SELLERS BAKERY

BREAD SLICER BLADES

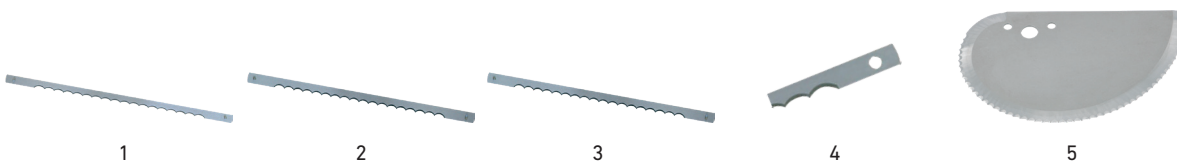


Photo	LF Code	GEV Code	Description	Notes
1	3710010	LF3710010	50 pieces, 290 x 10 x 0,5 mm	fixing rivet distance 270 mm, suitable to Jac, Sofinor
2	3710012	LF3710012	50 pieces, 290 x 13 x 0,5 mm	fixing rivet distance 270 mm, suitable to Jac
3	3710013	LF3710013	50 pieces, 290 x 13 x 0,7 mm	fixing rivet distance 270 mm, suitable to Jac
4	3710011	LF3710011	50 pieces, 280 x 10 x 0,5 mm	fixing rivet distance 260 mm, suitable to Sofinor
5	40KQ477	LF40KQ477	1 piece, 135 x 215 mm	fixing hole distance 42 mm, suitable to Electrolux

TECHNICAL TEXTILES



Photo	LF Code	GEV Code	Description	Notes
1	3309104	LF3309104	belt suitable to Bongard Omega CSV800 oven loader	2680 x 755 mm
1	3309096	LF3309096	belt suitable to Bongard CS 3T oven loader	2680 x 565 mm
2	3062128	LF3062128	belt suitable to Bertrand Euro 2000 moulder	wool felt, 380 x 620 x 3 mm
3	3062298	LF3062298	belt suitable to Pavailer sheeter	cotton/polyester on PVC frame, 1480 x 490 mm
3	3062327	LF3062327	belt suitable to Rondo Economie STM 503/513 sheeter	cotton/polyester on PVC frame, 1470 x 480 mm
3	3062328	LF3062328	belt suitable to Rondo Economie STM 503/513 sheeter	LDE type cotton, 1470 x 480 mm
4	3447045	LF3447045	dough couche for bread width 600 mm	50 m roll
5	3062214	LF3062214	transport pocket suitable to Jac BA600/670 swings	synthetic wool, 1355 x 108/325 mm, with 2 locking hooks

OVEN DOOR GLASSES

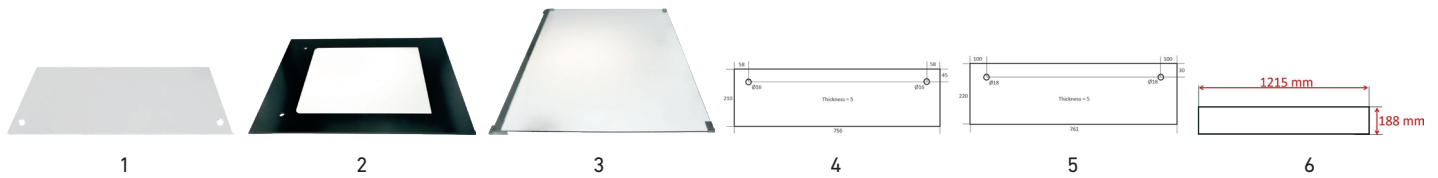


Photo	LF Code	GEV Code	Description	Notes
1	5137931	LF5137931	glass for oven door NXEP/00	suitable to Salva
2	5137921	LF5137921	glass for inner oven door K5/00	suitable to Salva
3	5137922	LF5137922	glass for inner oven door KXE/10	suitable to Salva
4	5142582	LF5142582	756 x 210 x 5 mm, toughened glass, 2 fastening holes	suitable to Bongard
5	5142598	LF5142598	761 x 220 x 5 mm, toughened glass, 2 fastening holes	suitable to Tibiletti
6	5120165	704702	1215 x 188 x 6 mm	suitable to Miwe

GASKETS

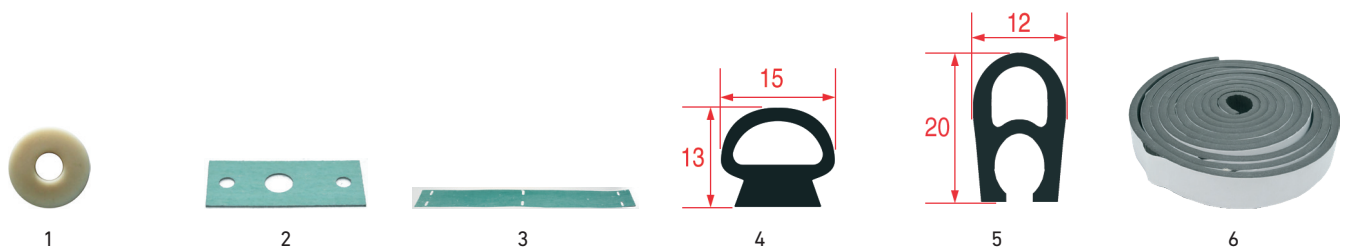


Photo	LF Code	GEV Code	Description	Notes
1	7155546	LF7155546	oven door fixing silicone gasket	sold by 50 pcs, \varnothing 28 x 10 x 3 mm, universal
2	7155582	LF7155582	steam injector gasket	Tesnit BA-55, 120 x 50 x 2 mm, suitable to Bongard
3	7159607	LF7159607	oven door glass gasket	Mabeo3100, 765 x 80 x 0,5 mm, suitable to Polin
4	7106609	LF7106609	oven door silicone gasket	sold by meter, profile 15 x 13 mm, grey, suitable to Salva
5	5040523	LF5040523	oven door silicone gasket	sold by meter, profile 20 x 12 mm, blue, suitable to Eurofours
6	3586024	LF3586024	door foam gasket	sold by meter, sticker strip, grey, suitable to Panimatic

TOP SELLERS BAKERY

MECHANICAL PARTS

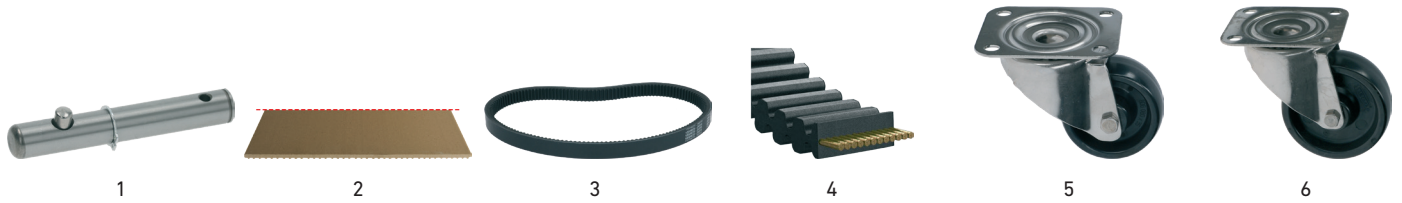


Photo	LF Code	GEV Code	Description	Notes
1	9742009	AS084798	tool shaft ø 13 x 85 mm	suitable to Kitchenaid
2	5034616	850071	refractory striped stone 615 x 330 x 11+3 mm	universal
3	40D2720	699205	toothed belt 396NV 1000W25 H25	suitable to Dito Sama
4	7133241	702282	double toothed belt 700DH075, 1778 x 19,05 mm	suitable to Marchand, Bongard
5	3738005	LF3738005	plate swivel castor ø 80 x 35 mm, fixing plate 105 x 85 mm	stainless steel / hard plastic, 100 kg, +280°C
6	3738004	LF3738004	plate swivel castor ø 100 x 35 mm, fixing plate 105 x 85 mm	stainless steel / hard plastic, 125 kg, +280°C

ACCESSORIES

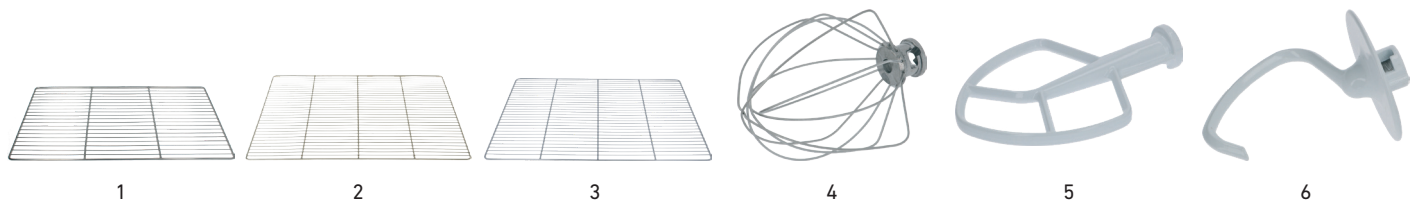


Photo	LF Code	GEV Code	Description	Notes
1	3185253	LF3185253	stainless steel grill 530 x 325 mm	GN 1/1, thickness 5 mm
2	7103563	970123	stainless steel grill 650 x 530 mm	GN 2/1, thickness 5 mm
3	3185254	LF3185254	stainless steel grill 600 x 400 mm	thickness 5 mm
4	9740035	699393	metal whisk with threads ø 2 mm	suitable to Kitchenaid
5	9740034	LF9740034	aluminium paddle width 138 mm	suitable to Kitchenaid
6	9740036	LF9740036	aluminium hook ø 10 mm	suitable to Kitchenaid

CONSUMABLES



1



2



3



4

Photo	LF Code	GEV Code	Description	Notes
1	2101328	LF2101328	high temperature black silicone	Camon, -60 to +300°C, 280 ml
2	3180052	LF3180052	high temperature red silicone	Fimi Silifim, -65 to +320°C, 280 ml
3	3180117	LF3180117	high temperature graphite grease	Belleville Rouge, -30 to +400°C, 400 g
4	7159878	LF7159878	high temperature food grade fluor white grease	IKV MPA 0H, NSF H1, 50g, suitable to Bongard



1



2



3



4

Photo	LF Code	GEV Code	Description	Notes
1	3180097	LF3180097	food grade spray penetrating lubricant	Belleville Degalim, 400 ml
2	3180043	LF3180043	food grade spray oil	Würth 08931071, NSF H1, 300 ml
3	3180113	LF3180113	food grade white spray grease	Belleville Nutrol, NSF H1, 400 ml
4	3180096	LF3180096	food grade thick oil	IKV Food Glide 3H/68, NSF H3, 5 l



GEV Großküchen-Ersatzteil-Vertrieb GmbH

Gadastr. 4
85232 Bergkirchen - Germany
T +49 8142 6522-50
info.ger@repagroup.com
www.gev-online.com

LF S.p.A. a socio unico

Via Voltri 80
47522 Cesena FC - Italy
T +39 0547 341111
info.it@repagroup.com
www.lfspareparts724.com

EPGC S.a.s.

13 Rue des Forts
59960 Neuville en Ferrain - France
T +33 3 20250621
france@repagroup.com
www.epgc.com

Commercial Catering Spares Ltd.

Block C - Axis Point Hill Top Road
Heywood - Lancashire - OL10 2RQ - UK
T +44 1706 621 155
info@ccspares.co.uk
www.ccspares.co.uk

Atel S.r.l. a socio unico

Via Selvuzzis 51/2
33100 Udine UD - Italy
T +39 0432 602095
info@atelitalia.com
www.atelitalia.com

www.repagroup.com